

KUWAIT BOURSA WEEKLY REPORT

FOR THE WEEK
JAN.04 - JAN.08
2026

(965) 22 675 140
Al-Safat Tower, Hawalli, Beirut St.
alsafatinvest.com
research@alsafatinvest.com
alsafatinvestment
al-safat-investment-company

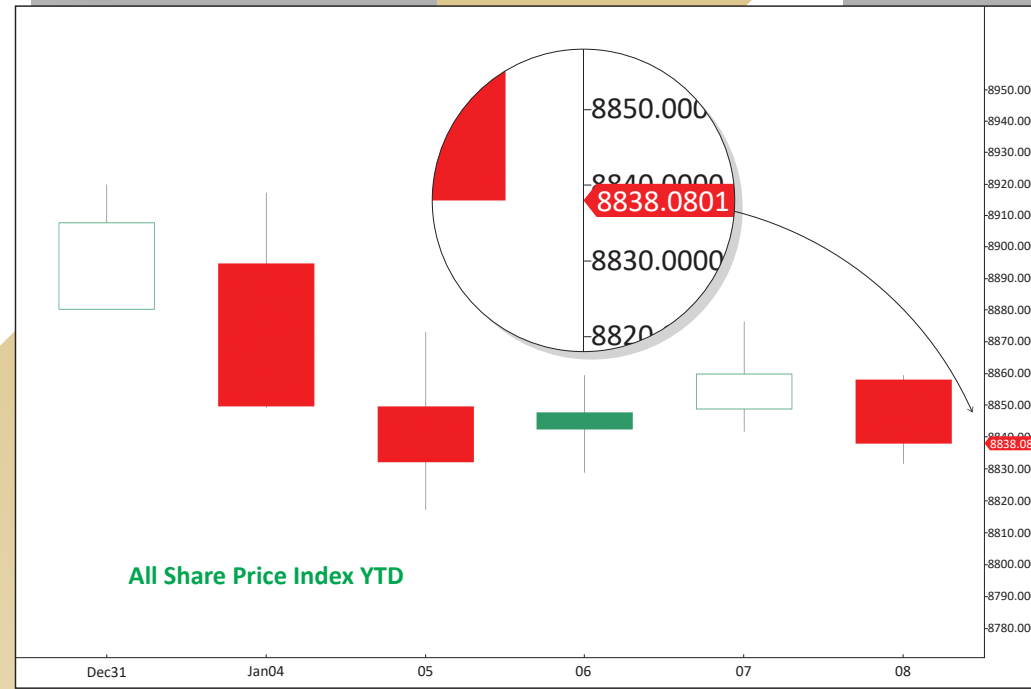
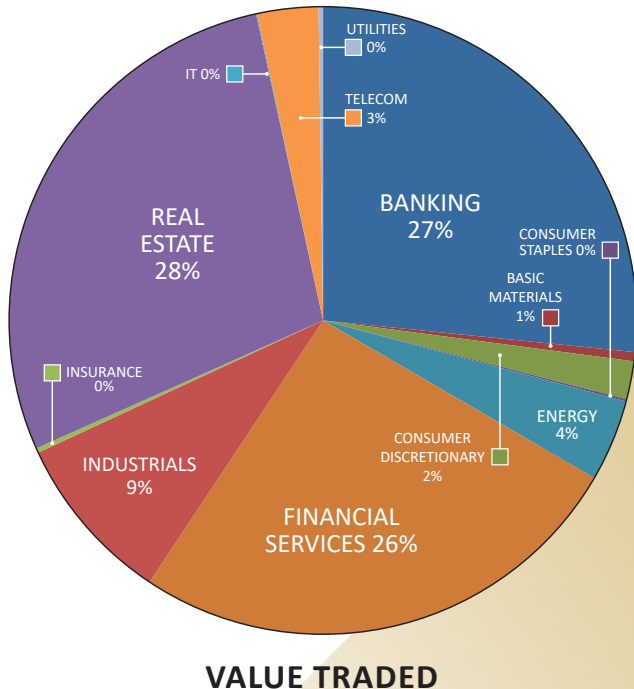
AL SAFAT
شركة الصفاة للاستثمار
AL SAFAT INVESTMENT COMPANY

Market	M. Cap (KD ml)	Last Close	WTD %	MTD %	YTD %	Quantity Traded	Value Traded	No. of Trades	P/E	P/B	% of Total M. Cap
Premier Market	44,206	9,443.72	-0.6%	-0.6%	-0.6%	787,512,899	262,982,423	41,852	18.6	1.8	82.1%
Main Market	9,642	8,157.33	-1.7%	-1.7%	-1.7%	547,386,666	109,386,198	46,104	14.2	1.2	17.9%
All Share	53,848	8,838.08	-0.8%	-0.8%	-0.8%	1,334,899,565	372,368,621	87,956	15.7	1.3	100%

Sector	M. Cap (KD ml)	Last Close	WTD %	MTD %	YTD %	Quantity Traded	Value Traded	No. of Trades	P/E	P/B	% of Total M. Cap
Banking	32,812	2,159.20	-0.5%	-0.5%	-0.5%	196,500,791	99,096,314	15,953	20.9	1.3	60.93%
Basic Materials	462	818.41	-1.8%	-1.8%	-1.8%	2,995,902	1,753,679	473	15.3	2.5	0.86%
Consumer Discretionary	1,571	2,336.56	-2.0%	-2.0%	-2.0%	12,087,802	7,314,402	3,018	16.4	1.4	2.92%
Consumer Staples	411	1,353.81	-0.4%	-0.4%	-0.4%	1,779,490	419,213	520	23.0	2.1	0.76%
Energy	504	1,791.45	3.3%	3.3%	3.3%	65,317,863	15,687,385	3,988	12.3	2.4	0.94%
Financial Services	6,169	1,856.62	-3.3%	-3.3%	-3.3%	474,584,336	96,604,328	23,830	15.7	1.3	11.46%
Health Care	278	579.01	-2.0%	-2.0%	-2.0%	8,936	5,520.630	35	24.3	1.8	0.52%
Industrials	2,527	748.97	-1.1%	-1.1%	-1.1%	102,394,687	32,642,069	8,548	15.8	1.3	4.69%
Insurance	797	1,914.57	-1.7%	-1.7%	-1.7%	7,357,574	887,847	926	10.3	1.2	1.48%
Real Estate	4,353	2,020.03	-0.5%	-0.5%	-0.5%	446,528,415	105,191,429	26,182	17.2	1.2	8.08%
Technology	13	909.37	-4.6%	-4.6%	-4.6%	1,359,348	173,168.98	235	NM	1.1	0.02%
Telecommunications	3,792	1,240.69	1.2%	1.2%	1.2%	18,153,869	11,726,167	3,698	10.2	2.4	7.04%
Utilities	162	386.84	-1.3%	-1.3%	-1.3%	5,830,552	867,098	550	11.8	1.2	0.30%

Top Gainers						Top Losers					
Stock	last Close	Change %	Volume	Value	Trades	Stock	last Close	Change %	Volume	Value	Trades
ALFTAQA	277	15.90%	56,079,970	14,449,690	2,996	DALQANRE	123	-30.11%	29,660,780	4,891,303	2,614
ALTIJARIA	224	10.34%	195,962,538	42,591,753	3,593	MARAKEZ	315	-25.53%	22,614,052	7,674,987	7,244
KMEFIC	170	9.68%	18,876,744	3,151,714	1,159	EKTTITAB	30	-20.05%	53,121,408	1,781,346	1,943
OOREDOO	1,537	8.70%	377,255	552,836	271	TAHSSILAT	131	-17.09%	446,250	63,274	127
ACICO	370	7.25%	25,852,673	9,332,122	2,185	FTI	189.0	-16.00%	860,985	174,438	290

Top Volume						Top Value					
Stock	Last	Change %	Volume	Value	Trades	Stock	Last	Change %	Volume	Value	Trades
ALTIJARIA	224	10.34%	195,962,538	42,591,753	3,593	ALTIJARIA	224	10.34%	195,962,538	42,591,753	3,593
GFH	184	-2.65%	82,421,460	15,441,218	1,932	KFH	810	-0.12%	47,628,082	38,410,635	5,854
ALFTAQA	277	15.90%	56,079,970	14,449,690	2,996	NBK	1,007	-0.79%	20,871,752	20,999,024	2,633
EKTTITAB	29.9	-20.05%	53,121,408	1,781,346	1,943	KRE	382	-0.52%	42,119,359	16,188,762	1,519
KFH	810.0	-0.12%	47,628,082	38,410,635	5,854	GFH	184	-2.65%	82,421,460	15,441,218	1,932



Market Summary:

- Premier and Main volume and value rose by 46% and 31%, and 17% and 13%, respectively.
- Both indexes remain unstable due to geopolitical tensions and unpredictable economic conditions.
- Technically, the All Share Index closed at 8,838, with support levels at 8,827, 8,790, and 8,740, while resistance stands at 8,884. The Premier Index closed at 9,443, with support levels at 9,437, 9,422, and 9,400, and resistance at 9,462. The Main Index closed at 8,157, with support levels at 8,156, 8,133, and 8,102, while resistance is at 8,186.