

# KUWAIT BOURSA WEEKLY REPORT

WEEK ENDED ON 9 OCTOBER 2025

Market	M. Cap (KD ml)	Last Close	WTD %	MTD %	YTD %	Quantity Traded	Value Traded	No. of Trades	P/E	P/B	% of Total M. Cap
Premier Market	43,393	9,301.65	-0.2%	-0.7%	18.7%	1,101,208,662	294,359,590	48,985	17.6	1.8	81.0%
Main Market	10,170	8,428.42	1.1%	2.4%	22.0%	3,654,319,647	491,708,176	154,328	17.9	1.3	19.0%
All Share	53,563	8,780.10	0.1%	-0.2%	19.3%	4,755,528,309	786,067,767	203,313	17.8	1.4	100%

Sector	M. Cap (KD ml)	Last Close	WTD %	MTD %	YTD %	Quantity Traded	Value Traded	No. of Trades	P/E	P/B	% of Total M. Cap
Banking	32,852	2,160.88	-0.6%	-1.2%	19.4%	212,840,570	101,971,452	17,128	23.0	1.6	61.33%
Basic Materials	519	919.11	0.1%	0.2%	0.9%	6,958,519	4,349,185	1,322	19.1	2.8	0.97%
Consumer Discretionary	1,546	2,302.59	0.6%	1.0%	8.5%	90,309,747	32,503,437	10,590	18.2	1.7	2.89%
Consumer Staples	404	1,329.03	6.9%	7.7%	33.1%	24,873,318	5,487,934	1,858	23.3	2.1	0.75%
Energy	345	1,699.64	3.3%	2.5%	42.9%	120,984,966	18,950,854	6,472	12.8	2.4	0.64%
Financial Services	6,306	1,843.48	2.6%	3.9%	22.0%	2,857,616,474	378,329,370	85,836	15.9	1.4	11.77%
Health Care	257	536.02	-1.4%	-12.1%	17.0%	127,927	173,894,540	54	18.8	1.6	0.48%
Industrials	2,532	750.36	2.8%	3.4%	3.7%	524,467,912	104,843,232	27,304	19.3	1.4	4.73%
Insurance	805	1,938.39	2.5%	2.4%	-5.7%	25,181,530	5,437,701	3,100	9.1	1.2	1.50%
Real Estate	4,245	1,968.75	-1.1%	-1.5%	45.5%	859,015,563	123,100,035	45,488	19.6	1.3	7.92%
Technology	17	1,265.85	2.4%	3.6%	21.7%	2,716,100	468,015.52	325	NM	1.5	0.03%
Telecommunications	3,556	1,163.30	0.0%	0.4%	14.3%	14,285,266	7,920,512	2,776	10.4	2.2	6.64%
Utilities	180	431.58	1.2%	5.8%	8.6%	16,150,417	2,633,175	1,060	14.1	1.3	0.34%

## Top Gainers

Stock	last Close	Change %	Volume	Value	Trades
CLEANING	155	32.48%	44,807,546	6,241,735	2,832
ALIMTIAZ	73	22.88%	271,612,449	18,944,799	8,304
ARGAN	162	20.90%	108,050,134	17,344,597	6,098
ACICO	240	20.60%	169,773,555	43,684,187	9,871
ABAR	213	19.66%	44,422,247	9,475,367	3,176

## Top Losers

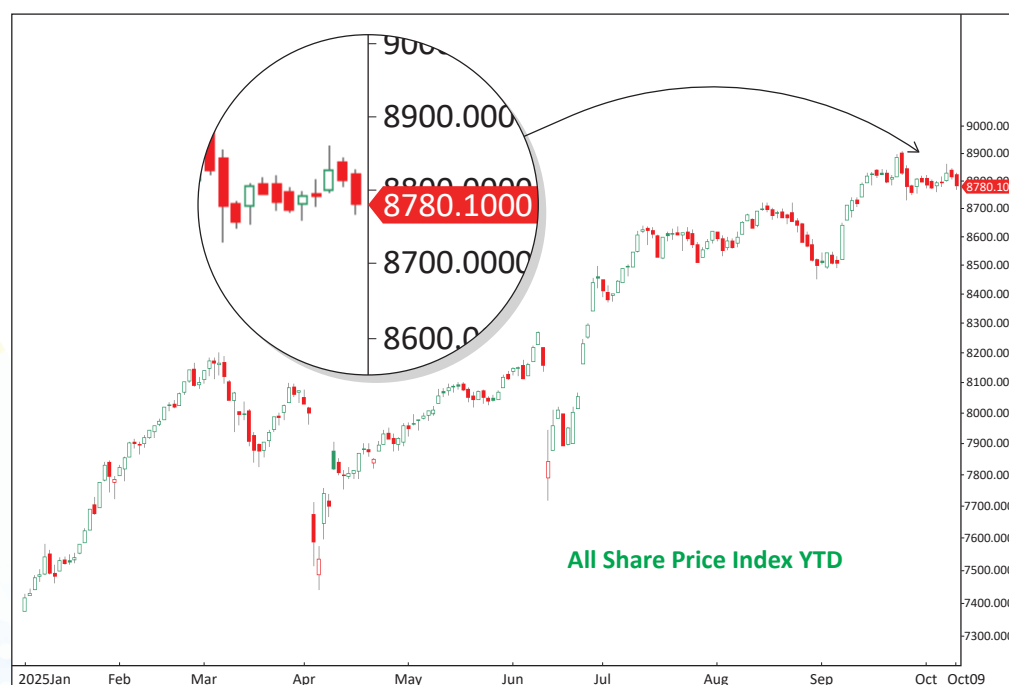
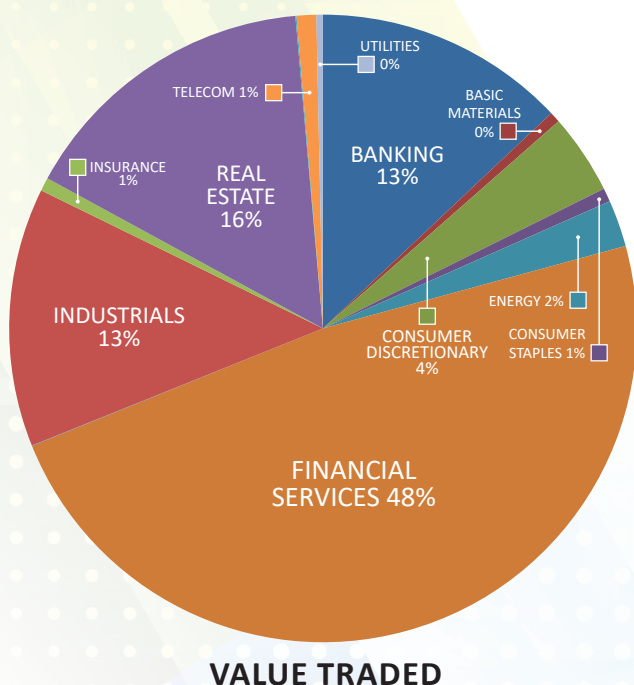
Stock	last Close	Change %	Volume	Value	Trades
MARAKEZ	702	-34.39%	10,204,904	7,746,360	7,897
ALSAFAT	245	-9.93%	12,524,350	3,237,642	1,161
URC	246	-6.46%	9,086,776	2,376,722	1,044
PAPER	266	-5.67%	1,219,084	329,853	274
ATC	550.0	-5.66%	110,927	59,618	47

## Top Volume

Stock	Last	Change %	Volume	Value	Trades
GFH	162	3.18%	331,058,639	54,863,310	4,752
ALOLA	145	2.84%	316,549,886	48,282,450	8,951
ALIMTIAZ	73	22.88%	271,612,449	18,944,799	8,304
ASIYA	56.2	14.93%	199,673,498	11,398,683	5,488
KPPC	91.7	17.41%	193,902,892	17,210,740	6,597

## Top Value

Stock	Last	Change %	Volume	Value	Trades
GFH	162	3.18%	331,058,639	54,863,310	4,752
ALOLA	145	2.84%	316,549,886	48,282,450	8,951
ACICO	240	20.60%	169,773,555	43,684,187	9,871
IFA	425	-2.75%	90,803,770	39,536,951	2,403
KFH	783	-0.38%	47,297,003	37,229,715	6,395



## Market Summary:

- Premier and Main Market volumes and values rose by 45% and 13%, and 32% and 37%, respectively.
- The Premier Market remains under selling pressure, while the Main Market has pulled back from its recent peak.
- Technically, the All Share Index closed at 8,780, with support at 8,740, 8,711, and 8,694, and resistance at 8,790. The Premier Index closed at 9,301, supported at 9,293, 9,258, and 9,216, with resistance at 9,317. The Main Index ended at 8,428, supported at 8,394, 8,364, and 8,308, while resistance stands at 8,430.