

KUWAIT BOURSA WEEKLY REPORT

WEEK ENDED ON 25 JUNE 2025

Market	M. Cap (KD ml)	Last Close	WTD %	MTD %	YTD %	Quantity Traded	Value Traded	No. of Trades	P/E	P/B	% of Total M. Cap
Premier Market	42,025	8,963.22	4.0%	1.9%	14.3%	997,683,429	315,584,391	44,743	17.7	1.6	82.6%
Main Market	8,853	7,251.11	5.7%	4.1%	5.0%	1,696,709,572	194,735,932	87,999	14.6	1.1	17.4%
All Share	50,878	8,293.37	4.3%	2.2%	12.6%	2,694,393,001	510,320,323	132,742	15.3	1.2	100%

Sector	M. Cap (KD ml)	Last Close	WTD %	MTD %	YTD %	Quantity Traded	Value Traded	No. of Trades	P/E	P/B	% of Total M. Cap
Banking	32,013	2,094.38	4.0%	2.9%	15.7%	419,314,583	182,039,438	20,028	23.9	1.5	62.92%
Basic Materials	487	860.89	4.5%	-6.0%	-5.5%	4,139,427	2,621,886	1,076	11.7	2.5	0.96%
Consumer Discretionary	1,542	2,288.26	4.6%	-2.1%	7.8%	36,462,795	17,446,409	5,967	19.5	1.9	3.03%
Consumer Staples	394	1,294.25	8.2%	6.2%	29.6%	2,867,304	2,757,959	324	23.6	1.9	0.78%
Energy	313	1,477.33	0.2%	-0.3%	24.2%	86,363,510	7,350,969	3,611	11.4	1.5	0.61%
Financial Services	5,311	1,528.29	5.6%	0.7%	1.2%	1,239,112,669	145,082,243	45,836	13.2	1.1	10.44%
Health Care	276	575.34	-7.3%	0.5%	25.5%	27,314	20,107,467	56	16.0	1.8	0.54%
Industrials	2,449	721.63	2.4%	-7.6%	-0.3%	179,053,664	36,337,396	11,276	16.7	1.1	4.81%
Insurance	783	1,898.58	1.9%	2.5%	-7.6%	160,536,498	18,221,889	9,979	9.1	1.1	1.54%
Real Estate	3,922	1,811.98	9.5%	10.3%	33.9%	495,208,501	81,167,238	29,317	16.0	1.0	7.71%
Technology	15	1,069.42	2.8%	-2.0%	2.8%	25,130,612	3,784,100.94	736	NM	1.3	0.03%
Telecommunications	3,212	1,051.10	2.3%	1.2%	3.3%	43,144,414	13,057,362	4,259	9.8	2.1	6.31%
Utilities	160	381.58	2.1%	1.4%	-4.0%	3,031,710	433,325	277	18.4	1.2	0.31%

Top Gainers

Stock	last Close	Change %	Volume	Value	Trades
MARAKEZ	2,398	110.91%	12,982,499	22,952,861	7,940
OSOUL	200	33.33%	26,198,426	4,859,487	1,417
ALAQARIA	47	33.14%	35,495,405	1,990,962	2,133
DIGITUS	169	29.01%	25,390,690	4,155,762	1,978
OSOS	166	25.76%	2,030,047	315,343	113

Top Losers

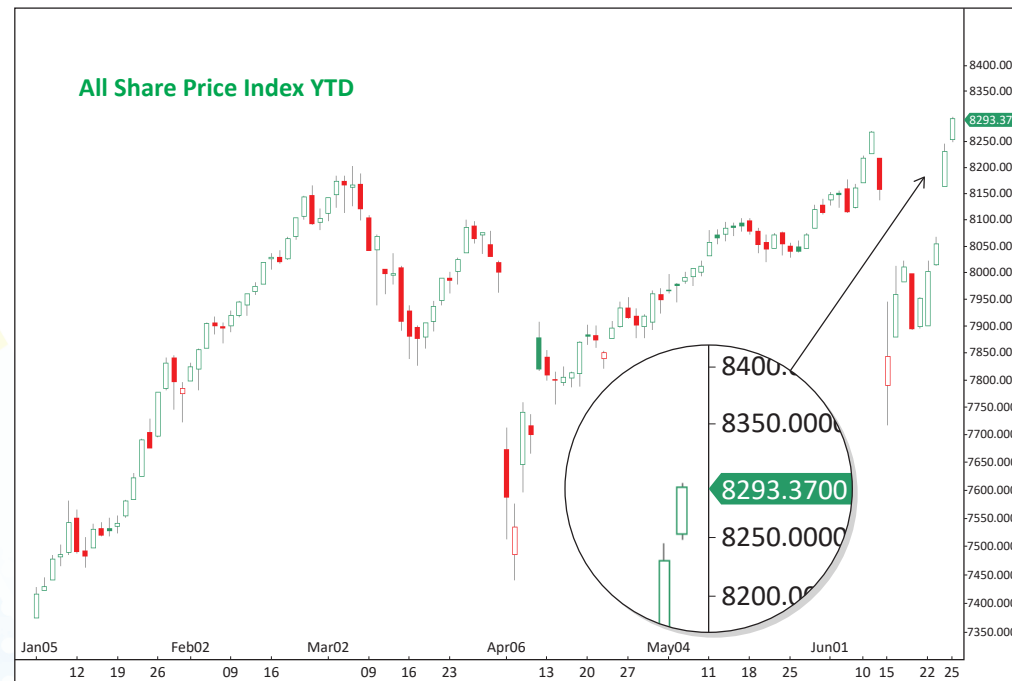
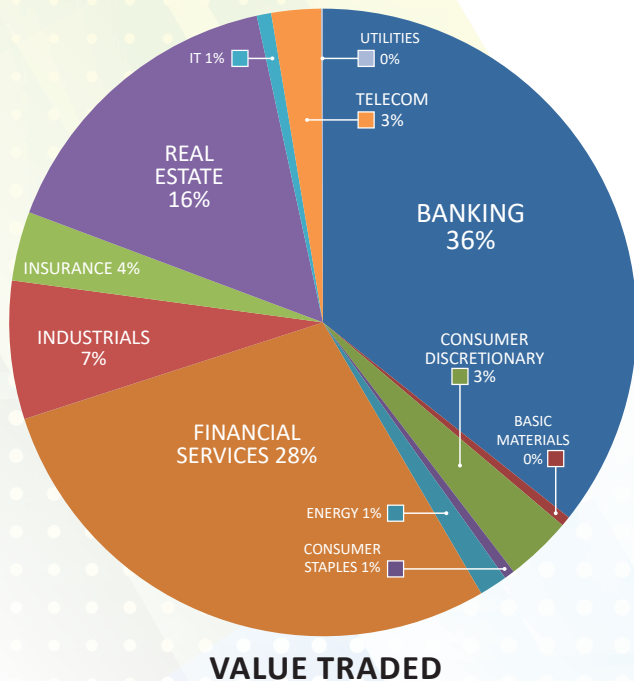
Stock	last Close	Change %	Volume	Value	Trades
ATC	711	-14.68%	26,314	19,396	53
TAHSSILAT	127	-14.19%	10,692,515	1,699,082	1,385
SPEC	163	-9.44%	25,503,385	4,282,451	1,480
NAPESCO	1,235	-9.12%	48,846	65,182	67
GFC	140.0	-6.04%	8,811	1,251	5

Top Volume

Stock	Last	Change %	Volume	Value	Trades
GFH	105	3.96%	217,719,478	22,962,586	2,256
WETHAQ	90	26.76%	159,393,767	17,980,765	9,781
KIB	264	6.02%	134,354,491	34,389,485	2,428
MANAZEL	38.7	2.65%	130,817,847	5,340,452	3,177
KBT	108.0	11.23%	122,681,550	13,287,846	4,163

Top Value

Stock	Last	Change %	Volume	Value	Trades
KFH	775	4.73%	87,265,502	66,182,914	7,161
KIB	264	6.02%	134,354,491	34,389,485	2,428
NBK	960	2.89%	28,062,548	26,630,034	2,949
WARBABANK	262	6.50%	99,466,085	25,603,631	3,186
GFH	105	3.96%	217,719,478	22,962,586	2,256



Market Summary:

- Premier market volume and value dropped by 9% and 8%, while the Main market rose by 75% and 67%, respectively.
- Both Premier and Main indexes rebounded significantly due to the end of the war.
- Technically, the All Share Index closed at 8,293, with support levels at 8,279, 8,261, and 8,216, and resistance at 8,314. The Premier Index closed at 8,963, with support levels at 8,926, 8,908, and 8,813, and resistance at 8,973. The Main Index closed at 7,251, with support levels at 7,210, 7,176, and 7,123, and resistance at 7,255.