

# KUWAIT BOURSA WEEKLY REPORT

WEEK ENDED ON 29 MAY 2025

Market	M. Cap (KD ml)	Last Close	WTD %	MTD %	YTD %	Quantity Traded	Value Traded	No. of Trades	P/E	P/B	% of Total M. Cap
Premier Market	41,034	8,799.09	0.9%	2.9%	12.3%	721,869,406	315,943,223	45,568	17.4	1.6	82.9%
Main Market	8,436	6,967.01	-0.2%	-2.6%	0.9%	837,288,987	118,220,860	43,763	14.2	1.1	17.1%
All Share	49,470	8,112.49	0.7%	1.9%	10.2%	1,559,158,393	434,164,083	89,331	15.3	1.2	100%

Sector	M. Cap (KD ml)	Last Close	WTD %	MTD %	YTD %	Quantity Traded	Value Traded	No. of Trades	P/E	P/B	% of Total M. Cap
Banking	30,939	2,036.02	1.0%	1.6%	12.5%	361,901,794	164,688,579	17,768	21.6	1.4	62.54%
Basic Materials	517	915.79	0.6%	0.6%	0.5%	5,873,509	3,983,181	1,056	12.7	2.5	1.04%
Consumer Discretionary	1,568	2,336.64	-2.1%	0.7%	10.1%	31,947,524	23,216,072	6,918	19.7	1.9	3.17%
Consumer Staples	370	1,219.21	10.1%	16.2%	22.1%	4,222,708	3,406,731	456	22.1	1.8	0.75%
Energy	302	1,481.35	-2.7%	6.9%	24.6%	13,832,575	2,600,737	1,200	11.0	1.3	0.61%
Financial Services	5,251	1,516.93	1.0%	2.5%	0.4%	449,914,932	89,072,846	21,391	14.2	1.1	10.62%
Health Care	274	572.22	-0.2%	-1.4%	24.9%	3,046,290	1,993,236.177	372	72.3	1.8	0.55%
Industrials	2,646	781.24	1.4%	3.8%	8.0%	118,330,763	41,399,173	10,227	16.3	1.1	5.35%
Insurance	765	1,851.57	1.4%	2.3%	-9.9%	7,105,366	650,458	1,104	8.7	1.0	1.55%
Real Estate	3,490	1,643.21	-0.2%	3.3%	21.4%	531,608,586	91,413,926	25,295	15.4	0.9	7.05%
Technology	15	1,091.25	-1.3%	-3.2%	4.9%	321,049	49,318.27	68	NM	1.3	0.03%
Telecommunications	3,175	1,039.01	-0.4%	0.9%	2.1%	26,644,153	11,056,460	3,132	9.8	1.8	6.42%
Utilities	157	376.32	-1.4%	-3.4%	-5.3%	4,409,144	633,365	344	18.1	1.2	0.32%

## Top Gainers

Stock	last Close	Change %	Volume	Value	Trades
ATC	868	11.28%	12,736	10,474	18
BOURSA	3,194	11.10%	1,632,029	4,879,033	1,178
MEZZAN	1,118	10.47%	3,155,561	3,299,675	317
MARAKEZ	308	10.39%	8,430,506	2,506,709	1,494
ACICO	72	10.38%	27,769,980	1,970,437	1,171

## Top Losers

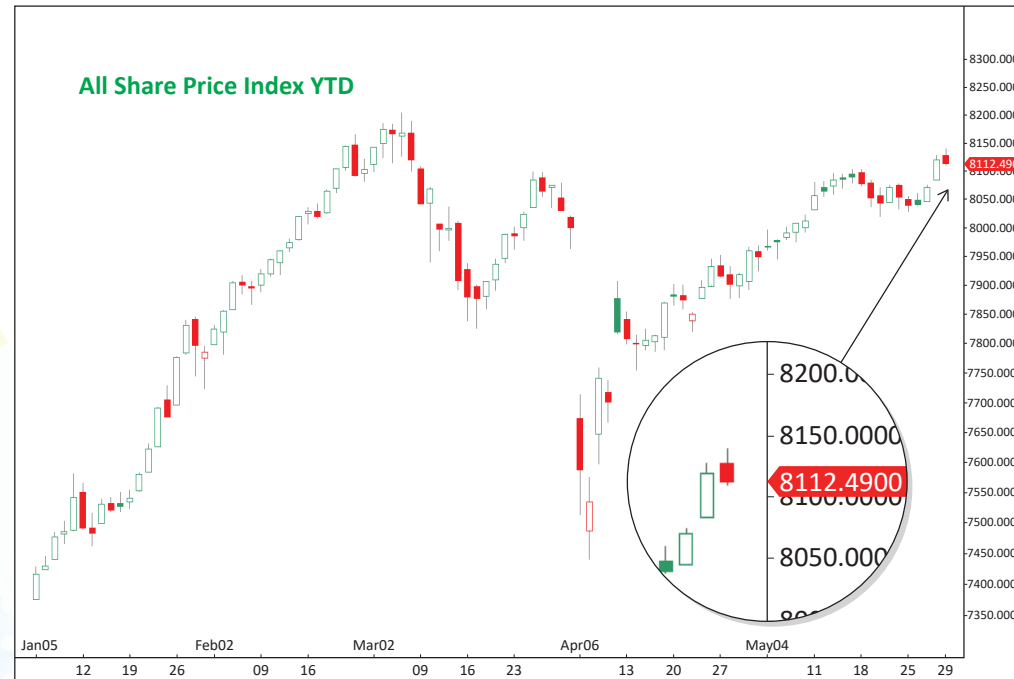
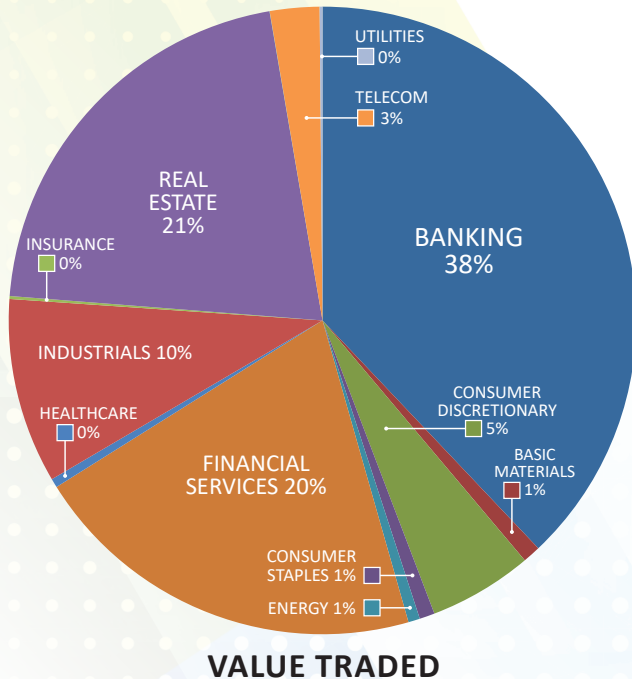
Stock	last Close	Change %	Volume	Value	Trades
IFAHR	1,162	-13.15%	7,983,811	10,335,510	2,054
KBT	114	-12.98%	79,040,847	9,651,876	3,213
GFC	130	-9.09%	10,803	1,440	2
ARGAN	104	-8.77%	70,035,979	8,231,467	2,297
MIDAN	712.0	-8.72%	3,033,554	1,982,762	354

## Top Volume

Stock	Last	Change %	Volume	Value	Trades
WARBABANK	247	5.56%	101,800,756	24,729,365	3,926
KFH	750	1.08%	81,163,177	60,650,937	5,500
KBT	114	-12.98%	79,040,847	9,651,876	3,213
ARGAN	104.0	-8.77%	70,035,979	8,231,467	2,297
ARABREC	85.3	4.41%	58,662,647	5,126,154	1,271

## Top Value

Stock	Last	Change %	Volume	Value	Trades
KFH	750	1.08%	81,163,177	60,650,937	5,500
NBK	956	0.95%	34,879,984	33,265,854	2,578
WARBABANK	247	5.56%	101,800,756	24,729,365	3,926
IFA	452	-2.80%	41,895,865	19,378,000	1,553
MABANEE	840	1.20%	22,531,424	18,984,143	2,473



## Market Summary:

- Premier market volume and value rose by 3% and 21%, while the Main market dropped by 18% and 12%, respectively.
- The Premier index rebounded from the support level and is moving upwards, while the Main index is moving horizontally.
- Technically, the All Share Index closed at 8112, with support levels at 8081, 8065, and 8042, and resistance at 8121. The Premier Index closed at 8799, with support levels at 8761, 8736, and 8682, and resistance at 8813. The Main Index closed at 6967, with support levels at 6956, 6890, and 6823, and resistance at 7003.