

KUWAIT BOURSA WEEKLY REPORT

WEEK ENDED ON 24 APRIL 2025

Market	M. Cap (KD ml)	Last Close	WTD %	MTD %	YTD %	Quantity Traded	Value Traded	No. of Trades	P/E	P/B	% of Total M. Cap
Premier Market	39,599	8,483.01	0.8%	-2.2%	8.2%	803,986,297	321,865,929	51,945	17.7	1.7	81.7%
Main Market	8,895	7,296.77	1.1%	0.4%	5.6%	1,437,918,589	211,796,830	73,392	12.8	1.0	18.3%
All Share	48,494	7,932.53	0.8%	-1.8%	7.7%	2,241,904,886	533,662,759	125,337	14.4	1.2	100%

Sector	M. Cap (KD ml)	Last Close	WTD %	MTD %	YTD %	Quantity Traded	Value Traded	No. of Trades	P/E	P/B	% of Total M. Cap
Banking	30,249	1,986.83	-0.1%	-2.8%	9.8%	385,675,022	164,324,478	21,877	21.7	1.6	62.38%
Basic Materials	518	918.47	5.4%	2.2%	0.8%	7,567,452	5,156,817	1,419	12.0	2.5	1.07%
Consumer Discretionary	1,609	2,350.80	2.5%	-0.4%	10.7%	56,283,509	33,047,700	9,015	25.4	1.6	3.32%
Consumer Staples	302	994.19	10.5%	0.7%	-0.4%	5,052,766	2,982,551	465	19.2	1.6	0.62%
Energy	276	1,360.71	7.0%	2.7%	14.4%	80,909,140	14,546,665	5,066	11.4	1.4	0.57%
Financial Services	5,213	1,494.57	1.7%	-0.9%	-1.1%	864,711,987	146,346,200	35,111	15.6	1.0	10.75%
Health Care	270	562.46	-1.4%	-1.4%	22.7%	1,076	793.922	4	84.0	1.7	0.56%
Industrials	2,586	763.27	4.4%	2.4%	5.5%	174,803,766	52,449,461	13,735	14.1	1.1	5.33%
Insurance	800	1,947.29	-0.4%	-8.7%	-5.3%	9,484,792	868,043	932	9.1	1.1	1.65%
Real Estate	3,278	1,544.13	2.0%	1.8%	14.1%	623,710,857	98,934,404	32,415	14.2	0.9	6.76%
Technology	16	1,185.82	3.2%	10.1%	14.0%	1,195,229	192,921.09	194	NM	1.4	0.03%
Telecommunications	3,214	1,051.68	2.2%	0.2%	3.3%	29,732,129	14,402,554	4,832	10.8	1.7	6.63%
Utilities	163	389.47	-0.7%	-3.9%	-2.0%	2,777,161	410,169	272	17.7	1.2	0.34%

Top Gainers

Stock	last Close	Change %	Volume	Value	Trades
MARAKEZ	257	289.39%	92,565,450	16,648,787	9,211
GFC	143	64.37%	234,416	28,546	55
KBT	171	27.61%	211,076,054	33,126,382	8,157
SENERGY	62	24.50%	23,720,033	1,419,280	797
ENERGYH	245	22.50%	55,360,540	12,844,130	4,014

Top Losers

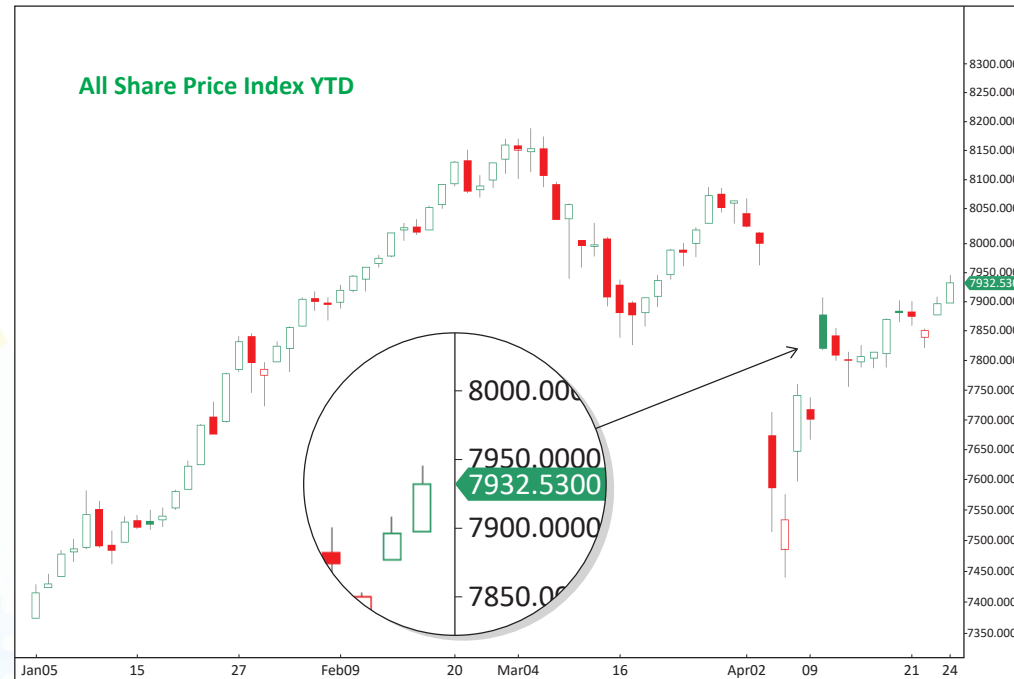
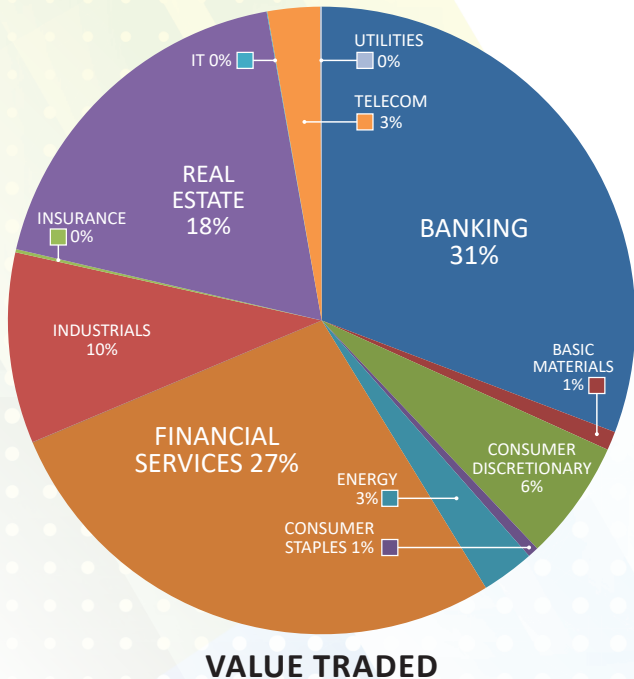
Stock	last Close	Change %	Volume	Value	Trades
NICBM	200	-10.71%	88,650	18,327	34
CBK	675	-8.90%	363,312	262,743	173
ALDEERA	373	-6.98%	22,379,526	8,797,015	1,082
KHOT	207	-6.33%	10,683	2,304	20
GINS	1,029.0	-4.99%	3,291	3,461	8

Top Volume

Stock	Last	Change %	Volume	Value	Trades
KBT	171	27.61%	211,076,054	33,126,382	8,157
ALSAFAT	117	18.18%	132,180,065	15,066,877	4,406
KIB	226	5.12%	109,125,446	24,526,160	1,827
ARZAN	278.0	3.35%	94,840,650	25,692,863	1,993
MARAKEZ	257.0	289.39%	92,565,450	16,648,787	9,211

Top Value

Stock	Last	Change %	Volume	Value	Trades
KFH	719	0.70%	87,724,386	62,546,337	9,161
KBT	171	27.61%	211,076,054	33,126,382	8,157
NBK	929	-2.72%	31,480,572	29,587,325	3,278
ARZAN	278	3.35%	94,840,650	25,692,863	1,993
KIB	226	5.12%	109,125,446	24,526,160	1,827



Market Summary:

- Premier and Main Market volume and value increased by 17% and 20%, and 156% and 148%, respectively.
- Buying pressure across the Premier and Main indexes has increased significantly.
- Technically, the All Share Index closed at 7,932, with support levels at 7,869, 7,850, and 7,810, and resistance at 7,934. The Premier Index closed at 8,483, with support levels at 8,427, 8,393, and 8,365, and resistance at 8,509. The Main Index closed at 7,296, with support levels at 7,286, 7,255, and 7,210, and resistance at 7,318.