

# KUWAIT BOURSA WEEKLY REPORT

WEEK ENDED ON 13 MARCH 2025

Market	M. Cap (KD ml)	Last Close	WTD %	MTD %	YTD %	Quantity Traded	Value Traded	No. of Trades	P/E	P/B	% of Total M. Cap
Premier Market	39,078	8,475.87	-2.2%	-2.5%	8.1%	546,085,916	220,935,420	43,099	17.0	1.6	81.6%
Main Market	8,810	7,199.00	-4.6%	-1.9%	4.2%	1,571,520,334	549,573,035	51,217	12.9	1.0	18.4%
All Share	47,888	7,907.97	-2.6%	-2.4%	7.4%	2,117,606,250	770,508,455	94,316	15.3	1.1	100%

Sector	M. Cap (KD ml)	Last Close	WTD %	MTD %	YTD %	Quantity Traded	Value Traded	No. of Trades	P/E	P/B	% of Total M. Cap
Banking	29,943	1,998.34	-2.4%	-1.5%	10.4%	201,979,364	101,927,771	17,327	20.3	1.5	62.53%
Basic Materials	489	866.20	-5.8%	-7.1%	-4.9%	9,454,358	6,334,935	1,834	11.1	2.2	1.02%
Consumer Discretionary	1,502	2,191.84	-7.3%	-5.7%	3.3%	673,837,285	405,912,175	18,226	21.4	1.5	3.14%
Consumer Staples	304	1,000.75	-2.7%	-3.4%	0.2%	2,738,121	2,119,653	415	46.0	1.6	0.63%
Energy	268	1,318.27	-1.9%	-3.4%	10.9%	84,782,830	14,968,418	5,481	10.8	1.2	0.56%
Financial Services	5,268	1,508.25	-2.4%	-3.9%	-0.2%	391,913,518	79,692,451	19,258	15.0	1.0	11.00%
Health Care	258	538.70	1.6%	3.7%	17.5%	13	9.450	2	27.0	1.7	0.54%
Industrials	2,479	731.65	-2.8%	-4.1%	1.1%	87,476,530	29,656,364	8,498	13.1	1.0	5.18%
Insurance	854	2,081.69	-0.9%	0.8%	1.3%	5,565,756	715,286	540	9.7	1.1	1.78%
Real Estate	3,186	1,495.38	-5.1%	-4.3%	10.5%	627,031,570	115,449,523	18,945	15.9	0.9	6.65%
Technology	16	1,171.27	1.3%	-27.5%	12.6%	4,643,663	753,246.76	515	NM	1.4	0.03%
Telecommunications	3,153	1,031.85	-0.1%	-3.5%	1.4%	26,529,169	12,725,548	3,084	11.4	1.3	6.58%
Utilities	168	402.63	-0.6%	-1.3%	1.3%	1,654,073	253,075	191	18.3	1.2	0.35%

### Top Gainers

Stock	last Close	Change %	Volume	Value	Trades
KFIC	147	9.70%	11,337,138	1,593,339	467
ALDEERA	409	6.79%	3,788,753	1,511,806	491
INJAZZAT	105	5.00%	621,058	63,326	13
GIH	587	4.82%	23,245	12,658	37
Emirates	53	4.13%	240	12,056	7

### Top Losers

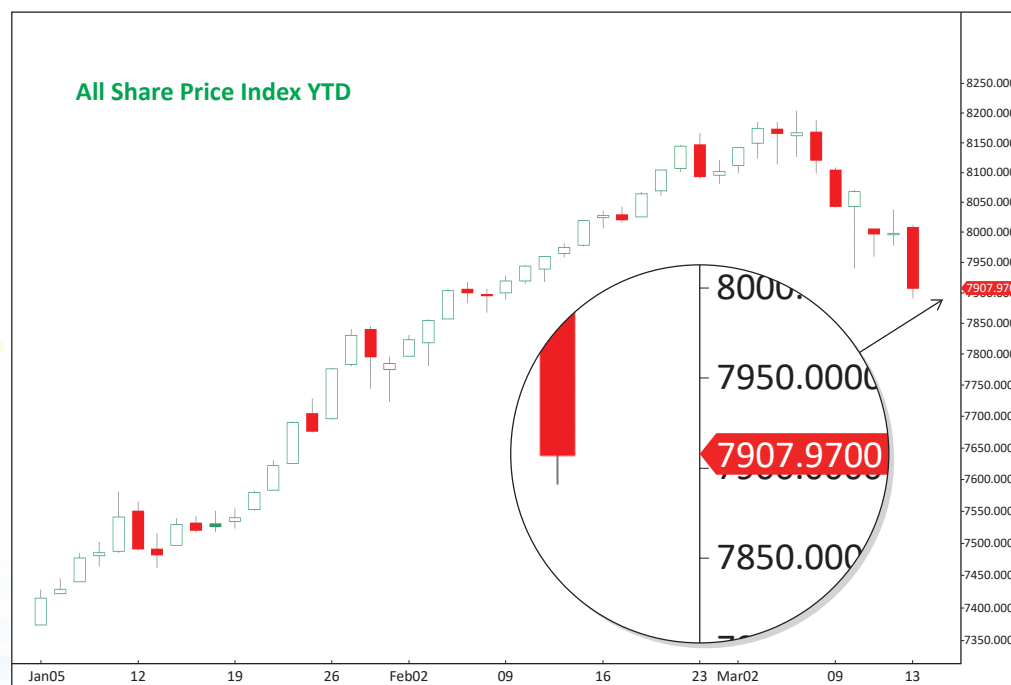
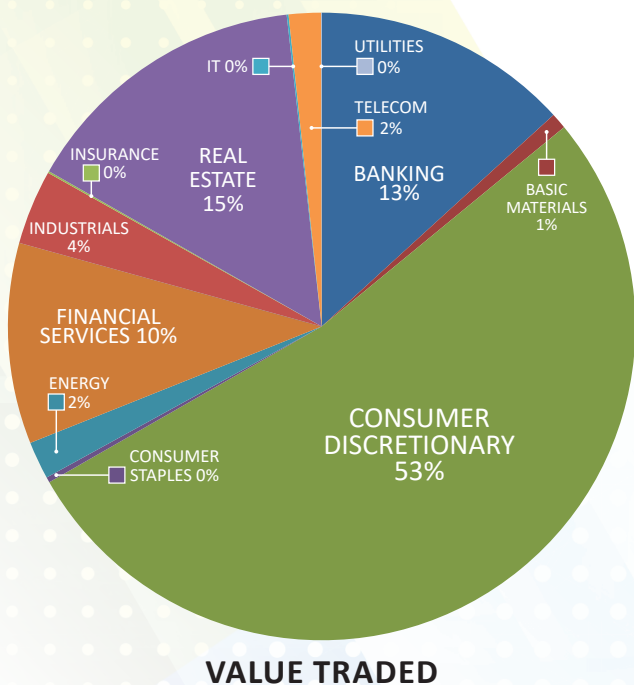
Stock	last Close	Change %	Volume	Value	Trades
KBT	96	-51.80%	392,356,997	79,526,928	7,882
OULAFUEL	366	-33.33%	636,912,783	387,826,165	12,806
ENERGYH	178	-25.21%	80,459,677	14,575,942	5,187
SOOR	256	-17.95%	12,034,929	3,877,546	2,109
KAMCO	118.0	-12.59%	12,592,309	1,517,801	567

### Top Volume

Stock	Last	Change %	Volume	Value	Trades
OULAFUEL	366	-33.33%	636,912,783	387,826,165	12,806
KBT	96	-51.80%	392,356,997	79,526,928	7,882
ENERGYH	178	-25.21%	80,459,677	14,575,942	5,187
ARABREC	90.0	0.45%	73,266,601	6,681,628	2,290
ARZAN	295.0	3.51%	50,604,014	14,452,990	1,598

### Top Value

Stock	Last	Change %	Volume	Value	Trades
OULAFUEL	366	-33.33%	636,912,783	387,826,165	12,806
KBT	96	-51.80%	392,356,997	79,526,928	7,882
KFH	784	-2.12%	50,288,585	39,664,819	6,156
NBK	1,024	-1.73%	22,801,204	23,442,063	3,201
ENERGYH	178	-25.21%	80,459,677	14,575,942	5,187



### Market Summary:

- Premier Market volume and value dropped by 28% and 18%, respectively, while the Main Market rose by 32% and 74%.
- The Premier and Main indexes continued to decline due to the U.S. trade war.
- Technically, the All-Share Index closed at 7,907, with support levels at 7,850, 7,810, and 7,726, while resistance was at 7,934. The Premier Index closed at 8,475, with support levels at 8,427, 8,393, and 8,335, while resistance was at 8,509. The Main Index closed at 7,199, with support levels at 7,176, 7,123, and 7,088, while resistance was at 7,210.