

KUWAIT BOURSA WEEKLY REPORT

WEEK ENDED ON 6 MARCH 2025

Market	M. Cap (KD ml)	Last Close	WTD %	MTD %	YTD %	Quantity Traded	Value Traded	No. of Trades	P/E	P/B	% of Total M. Cap
Premier Market	39,950	8,663.67	-0.3%	-0.3%	10.5%	761,892,798	268,214,672	46,049	17.8	1.6	81.3%
Main Market	9,209	7,544.88	2.9%	2.9%	9.2%	1,192,406,410	315,990,854	45,318	13.3	1.1	18.7%
All Share	49,158	8,119.35	0.2%	0.2%	10.3%	1,954,299,208	584,205,526	91,367	15.3	1.1	100%

Sector	M. Cap (KD ml)	Last Close	WTD %	MTD %	YTD %	Quantity Traded	Value Traded	No. of Trades	P/E	P/B	% of Total M. Cap
Banking	30,689	2,047.57	0.9%	0.9%	13.1%	316,595,989	140,007,630	19,612	20.2	1.5	62.43%
Basic Materials	519	919.83	-1.3%	-1.3%	0.9%	5,816,658	4,103,946	1,270	11.7	2.3	1.06%
Consumer Discretionary	1,620	2,365.58	1.8%	1.8%	11.4%	390,359,482	206,296,131	14,141	23.5	1.6	3.29%
Consumer Staples	312	1,028.16	-0.8%	-0.8%	3.0%	3,788,322	2,739,218	489	46.7	1.6	0.64%
Energy	273	1,343.42	-1.5%	-1.5%	13.0%	15,182,452	2,977,015	2,039	11.2	1.2	0.55%
Financial Services	5,379	1,544.96	-1.5%	-1.5%	2.3%	524,143,616	84,965,479	22,488	15.0	1.1	10.94%
Health Care	254	530.25	2.1%	2.1%	15.7%	12,783	9,239,844	19	26.8	1.6	0.52%
Industrials	2,550	752.59	-1.3%	-1.3%	4.0%	83,130,824	25,179,525	6,818	14.3	1.0	5.19%
Insurance	862	2,101.29	1.8%	1.8%	2.2%	2,948,768	469,649	371	9.9	1.1	1.75%
Real Estate	3,357	1,576.01	0.9%	0.9%	16.5%	534,718,526	91,366,014	17,016	16.5	0.9	6.83%
Technology	16	1,156.72	-28.4%	-28.4%	11.2%	28,791,679	5,187,743.01	2,225	NM	1.3	0.03%
Telecommunications	3,158	1,033.28	-3.3%	-3.3%	1.5%	39,499,125	19,450,264	4,326	11.3	1.3	6.42%
Utilities	169	405.26	-0.6%	-0.6%	2.0%	9,310,984	1,453,673	553	18.4	1.3	0.34%

Top Gainers

Stock	last Close	Change %	Volume	Value	Trades
SOOR	312	27.87%	14,101,471	4,341,700	2,353
OULAFUEL	549	25.34%	350,770,495	183,584,187	8,154
WARBACAP	318	17.34%	5,045,472	1,554,863	581
KBT	200	16.96%	284,682,783	54,472,323	5,057
CBK	848	14.60%	743,167	584,541	91

Top Losers

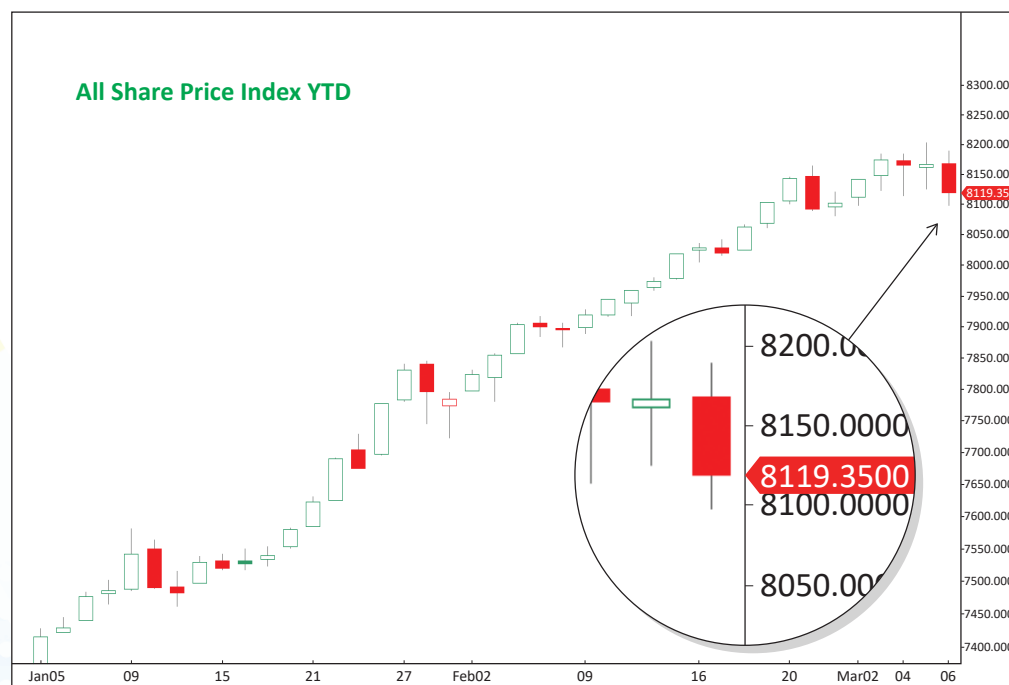
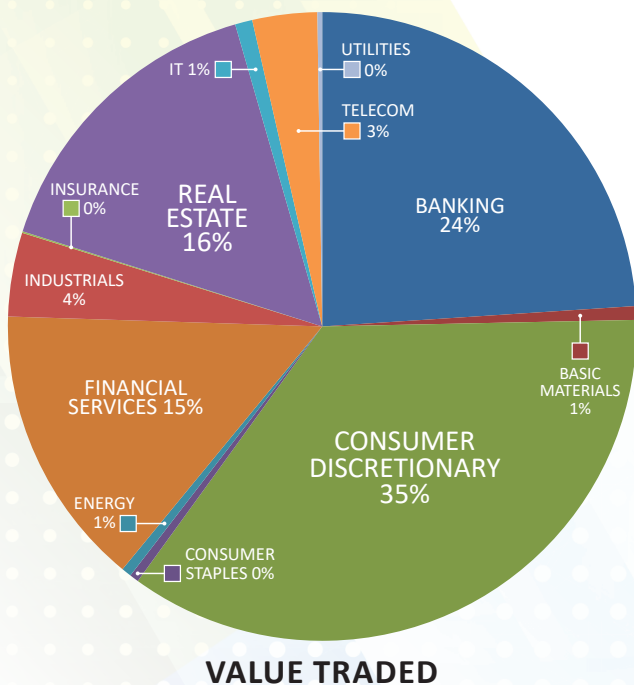
Stock	last Close	Change %	Volume	Value	Trades
ASC	159	-28.38%	28,791,679	5,187,743	2,225
UNICAP	249	-14.14%	7,497,463	1,940,331	976
GIH	560	-13.71%	28,116	16,298	46
FTI	171	-12.76%	727,818	126,655	198
ALDEERA	383.0	-11.55%	3,997,795	1,714,799	581

Top Volume

Stock	Last	Change %	Volume	Value	Trades
OULAFUEL	549	25.34%	350,770,495	183,584,187	8,154
KBT	200	16.96%	284,682,783	54,472,323	5,057
KPROJ	98	-1.01%	161,565,729	16,422,829	3,070
WARBABANK	227.0	-5.42%	72,971,676	17,145,401	3,242
KFH	801.0	0.00%	50,223,784	40,401,050	5,637

Top Value

Stock	Last	Change %	Volume	Value	Trades
OULAFUEL	549	25.34%	350,770,495	183,584,187	8,154
KBT	200	16.96%	284,682,783	54,472,323	5,057
KFH	801	0.00%	50,223,784	40,401,050	5,637
NBK	1,042	1.17%	29,826,074	30,926,201	3,243
WARBABANK	227	-5.42%	72,971,676	17,145,401	3,242



Market Summary:

- A slight drop in volume and value due to the long national holiday.
- The Premier Index retreated from the resistance level, while the Main Index is moving upwards.
- Technically, the All-Share Index closed at 8,119, with support levels at 8,081, 8,065, and 8,042, while resistance is at 8,121. The Premier Index closed at 8,663, with support levels at 8,599, 8,509, and 8,427, while resistance is at 8,682. The Main Index closed at 7,544, with support levels at 7,493, 7,452, and 7,410, while resistance is at 7,549.