

KUWAIT BOURSA WEEKLY REPORT

WEEK ENDED ON 16 MAY 2024

Market	M. Cap (KD ml)	Last Close	WTD %	MTD %	YTD %	Quantity Traded	Value Traded	No. of Trades	P/E	P/B	% of Total M. Cap
Premier Market	35,674	7,827.58	1.4%	1.8%	4.7%	755,344,451	268,474,520	45,657	17.0	1.3	82.2%
Main Market	7,716	5,962.11	-0.2%	0.7%	7.0%	691,252,429	76,711,722	34,856	11.8	0.8	17.8%
All Share	43,391	7,163.23	1.2%	1.6%	5.1%	1,446,596,880	345,186,242	80,513	13.4	0.9	100%

Sector	M. Cap (KD ml)	Last Close	WTD %	MTD %	YTD %	Quantity Traded	Value Traded	No. of Trades	P/E	P/B	% of Total M. Cap
Banking	26,552	1,772.40	1.7%	2.4%	7.6%	394,759,366	170,001,452	20,485	16.7	1.3	61.19%
Basic Materials	474	840.27	1.1%	-1.7%	12.6%	5,615,774	3,748,460	1,688	9.6	1.5	1.09%
Consumer Discretionary	1,153	1,676.12	-0.4%	-0.2%	4.5%	78,718,733	14,828,121	6,048	12.1	1.4	2.66%
Consumer Staples	261	859.29	1.5%	3.2%	30.5%	3,298,852	1,387,835	387	25.2	1.4	0.60%
Energy	222	1,060.25	0.3%	-0.1%	11.7%	9,473,502	1,033,509	582	9.7	0.8	0.51%
Financial Services	4,783	1,365.67	1.5%	2.4%	12.7%	492,273,892	67,583,779	21,822	13.1	0.8	11.02%
Health Care	224	467.69	-1.5%	-4.0%	-3.0%	196,190	147,725.301	17	12.3	1.6	0.52%
Industrials	2,571	757.97	0.7%	-1.3%	-16.5%	91,502,883	29,357,403	7,640	12.3	0.9	5.93%
Insurance	1,008	2,465.23	-0.6%	-0.9%	7.5%	20,151,282	2,474,553	1,981	8.3	1.1	2.32%
Real Estate	2,805	1,318.82	1.0%	2.6%	8.7%	307,323,326	34,603,839	14,286	15.1	0.8	6.47%
Technology	24	1,767.82	-7.3%	-7.3%	205.7%	859,088	211,910.24	211	NM	2.1	0.06%
Telecommunications	3,137	1,026.14	-1.4%	-1.7%	-7.1%	39,408,015	19,333,116	5,056	16.3	1.3	7.23%
Utilities	174	415.79	0.0%	-4.8%	-8.7%	3,015,977	474,541	310	13.5	1.3	0.40%

Top Gainers

Stock	last Close	Change %	Volume	Value	Trades
INOVEST	109	36.76%	36,603,211	3,568,267.602	1,231
WINSRE	144	21.01%	6,782,698	908,511	514
KMEFIC	79.9	13.66%	4,730,063	371,168	396
FUTUREKID	184	13.58%	34,737,127	6,250,681	1,946
MASHAER	75.8	13.13%	7,002,699	512,253	450

Top Losers

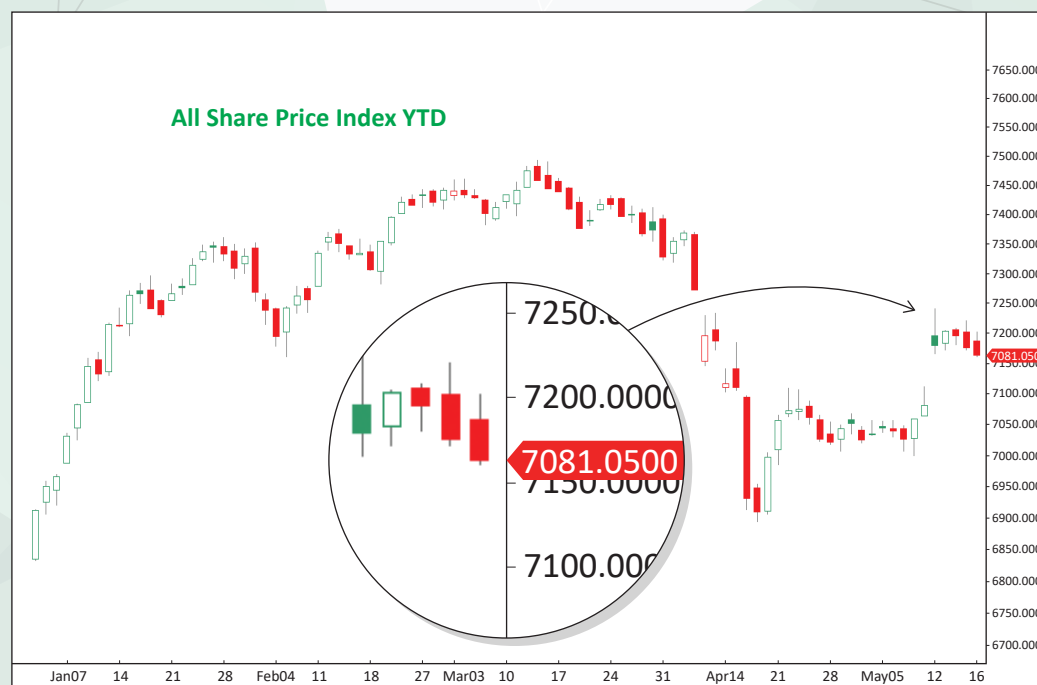
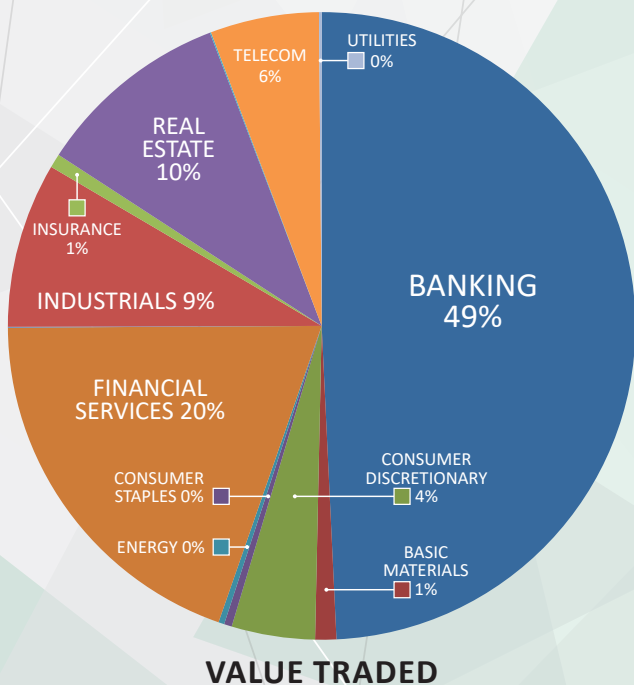
Stock	last Close	Change %	Volume	Value	Trades
KUWAITRE	338	-17.36%	3,458	1,286	12
ATC	415	-13.36%	9,503	3,945	4
KGL	41.2	-12.34%	2,862,608	121,685	207
ALAQARIA	28.8	-12.20%	1,539,435	46,111	50
KFIC	74	-11.90%	20,480,740	1,596,108	846

Top Volume

Stock	Last	Change %	Volume	Value	Trades
KFH	745	1.22%	98,216,417	73,181,436	6,994
KIB	172	4.24%	84,802,806	14,376,413	1,338
GBK	260	3.17%	74,700,120	19,532,323	2,725
AGLTY	313	2.62%	56,974,374	17,824,544	3,659
WARBABANK	182	1.11%	48,268,244	8,877,057	1,773

Top Value

Stock	Last	Change %	Volume	Value	Trades
KFH	745	1.22%	98,216,417	73,181,436	6,994
NBK	875	3.18%	42,653,079	37,659,337	4,269
GBK	260	3.17%	74,700,120	19,532,323	2,725
AGLTY	313	2.62%	56,974,374	17,824,544	3,659
ZAIN	472	-1.26%	36,648,419	17,491,769	4,072



Market Summary:

- Premier volume and value increased by 61% and 58%, while the Main market dropped by 8% for both.
- The Premier index had a significant jump, while the Main index is yet to overcome a critical resistance level.
- Technically, the All Share index closed at 7163, with support levels at 7612, 7105, and 7085, and resistance at 7178. The Premier index closed at 7827, with support levels at 7827, 7808, and 7767, and resistance at 7864. The Main index closed at 5962, with support levels at 5959, 5940, and 5925, and resistance at 5970.