

Market	M. Cap (KD ml)	Last Close	WTD %	MTD %	YTD %	Quantity Traded	Value Traded	No. of Trades	P/E	P/B	% of Total M. Cap
Premier Market	38,199	8,201.47	0.5%	1.4%	3.2%	358,093,203	183,777,514	27,686	16.9	1.4	77.7%
Main Market	9,977	5,543.07	-1.4%	-1.4%	-0.5%	442,993,055	64,874,089	22,015	12.7	0.8	22.3%
All Share	48,176	7,339.91	0.1%	0.9%	2.5%	801,086,258	248,651,602	49,701	13.5	0.8	100%

Sector	M. Cap (KD ml)	Last Close	WTD %	MTD %	YTD %	Quantity Traded	Value Traded	No. of Trades	P/E	P/B	% of Total M. Cap
Banking	31,035	1,843.38	0.9%	1.7%	4.6%	195,163,726	122,371,565	14,339	22.7	1.3	62.21%
Basic Materials	764	856.50	-1.2%	-0.8%	0.0%	1,222,632	958,649	315	8.3	1.3	1.09%
Consumer Discretionary	946	1,411.18	-0.1%	0.5%	-0.8%	28,352,657	7,461,793	2,773	13.6	1.0	2.12%
Consumer Staples	144	473.43	-0.4%	-1.3%	0.4%	3,878,075	1,507,199	292	NM	0.9	0.32%
Energy	227	1,084.67	-1.5%	-1.3%	-7.9%	3,811,616	191,736	355	11.5	0.6	0.51%
Financial Services	4,422	1,260.10	-0.3%	0.5%	1.9%	320,836,269	39,670,853	11,102	11.4	0.7	9.92%
Health Care	222	447.32	5.1%	0.8%	-3.1%	148,583	68,004,470	42	14.0	2.3	0.50%
Industrials	3,491	992.19	0.2%	1.3%	-5.2%	67,614,084	33,527,674	6,888	12.9	0.9	7.81%
Insurance	647	1,574.13	0.5%	1.3%	1.3%	483,610	128,291	68	10.5	0.8	1.45%
Real Estate	2,535	1,174.40	-1.6%	-1.2%	-1.3%	133,011,412	13,294,490	6,004	15.9	0.6	5.66%
Technology	10	734.05	3.0%	5.5%	-0.1%	4,100	393	4	NM	0.9	0.02%
Telecommunications	3,534	1,152.10	-5.0%	-3.8%	-1.4%	45,102,959	29,206,265	7,314	13.3	2.0	7.93%
Utilities	199	476.32	0.6%	-0.5%	-1.6%	1,456,535	264,687	205	14.9	1.7	0.45%

Top Gainers

Stock	last Close	Change %	Volume	Value	Trades
ATC	500	31.58%	148,503	67,956,030	41
FACIL	191.0	9.14%	3,340,094	626,054,024	325
NCCI	122	7.96%	17,781,295	2,109,307,881	434
NOOR	185	5.71%	2,036,047	371,716,477	259
TIJARA	57	5.37%	5,857,180	330,883,722	326

Top Losers

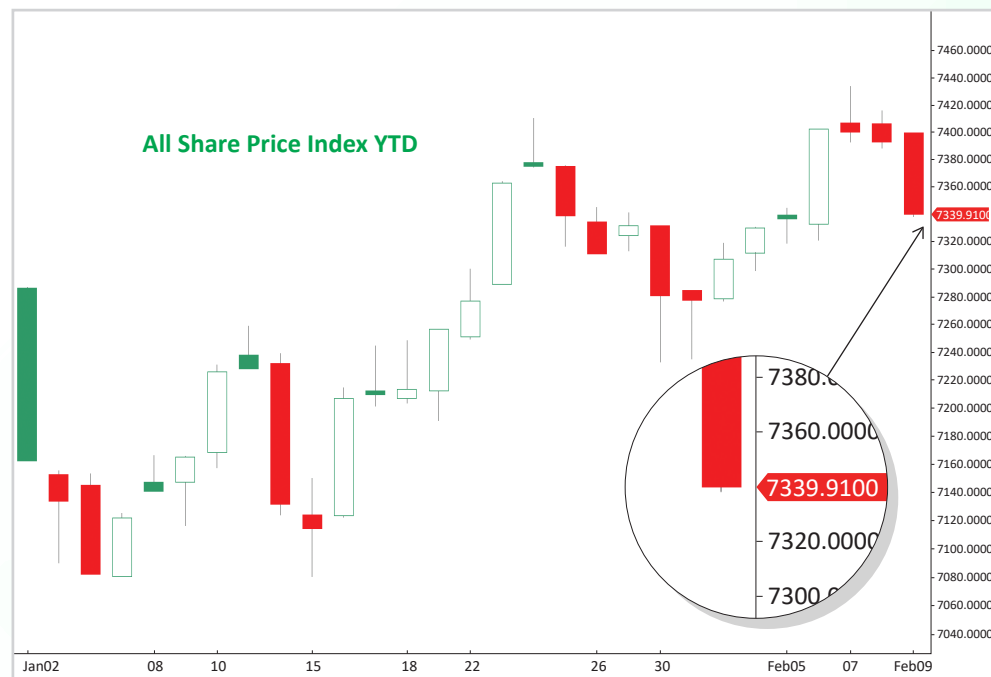
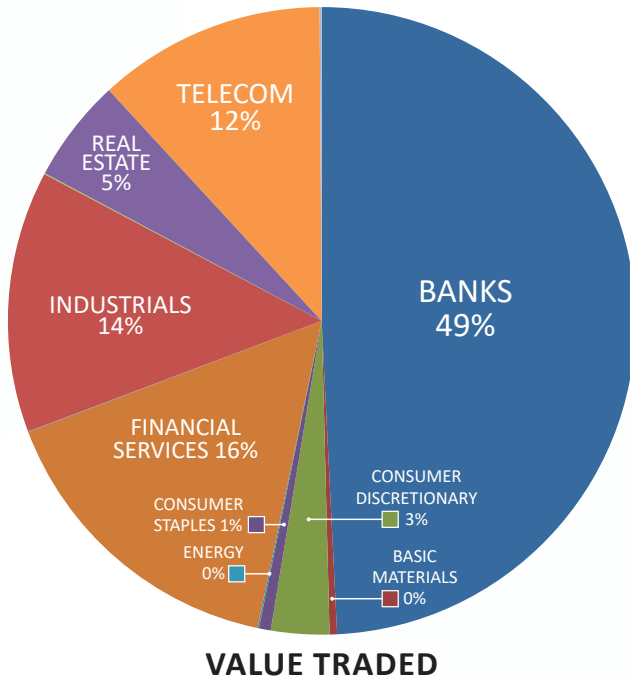
Stock	last Close	Change %	Volume	Value	Trades
ENERGYH	73.4	-22.74%	286,856	23,457	128
MAZAYA	39	-15.37%	19,612,858	821,318	632
MADAR	98	-13.36%	4,381	449	6
STC	602.0	-11.47%	29,613,544	20,219,372	5,158
MASAKEN	22.5	-11.42%	123,375	2,957	22

Top Volume

Stock	Last	Change %	Volume	Value	Trades
KFH	867	3.58%	95,697,238	82,088,437	7,147
GFH	79.1	1.28%	78,977,232	6,169,004	1,815
AAYAN	151	3.42%	57,320,190	8,435,485	911
KPROJ	116	-0.85%	46,914,723	5,559,624	962
NRE	93	-8.82%	41,408,276	4,068,181	1,955

Top Value

Stock	Last	Change %	Volume	Value	Trades
KFH	867	3.58%	95,697,238	82,088,437	7,147
STC	602	-11.47%	29,613,544	20,219,372	5,158
AGLTY	610	1.33%	31,671,546	19,258,601	3,265
NBK	1,110	-0.80%	14,972,505	16,805,031	2,591
AAYAN	151	3.42%	57,320,190	8,435,485	911



Market Summary:

- Premier and Main Markets' weekly volume and value increased by 21% and 20%, and 35% and 53%, respectively.
- The Premier Market index is yet to overcome a critical resistance level while the Main Market index is still struggling to hold onto current support.
- Technically, the All Share index closed at 7339, with support levels at 7318, 7286, and 7214, and resistance at 7379. The Premier index closed at 8201, with support levels at 8184, 8116, and 8064, while resistance at 8273. The Main index closed at 5543, with support levels at 5526, 5513, and 5495, while resistance at 5550.