

## Kuwait Market Indices

Indicators	M. Cap (KD mn)	Last Close	% WTD	% MTD	% YTD	P/E	P/B
Kuwait All Share Index (PR)	33,581	5,691	-0.1	-1.5	2.6	24.0	1.9
Main Market Index (PR)	8,262	4,663	-0.4	-1.7	2.4	14.9	1.4
Premier Market Index (PR)	25,320	6,213	0.0	-1.5	2.7	26.9	2.0
Kuwait Islamic Index (PR)	13,777	87	1.1	-0.9	2.8	21.2	1.3

Note: PR denotes Price Return indices

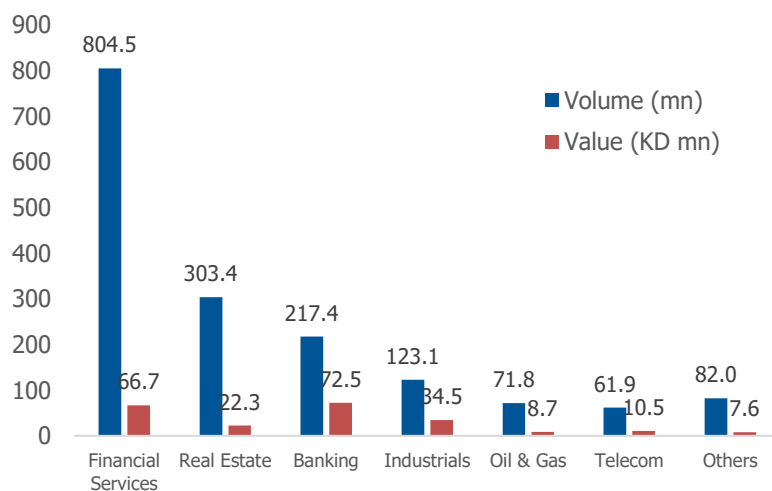
## Most Active by Value Traded

Company Name	Value traded for the week (KD million)
Arzan Financial Group for Financing and Investment KPSC	20.0
National Bank of Kuwait SAKP	16.3
KUWAIT FINANCE HOUSE K.S.C.P	15.0
Human Soft Holding Company KSCP	13.2
International Financial Advisors KPSC	9.9

## Top Gainers

Company Name	M Cap (KD mn)	WTD %
Metal and Recycling Co KSCP	12.1	18.6
National Shooting Company KPSC	7.3	15.1
Kuwait Business Town Real Estate Co	32.5	12.8
Bayan Investment Co KSCP	17.7	12.5
Gulf Cable and Electrical Industries Co KPSC	180.7	12.0

## Kuwait Sector Volume and Value Traded



Note: Others includes Consumer Services, Basic Materials, Consumer Goods, Insurance, Healthcare and Technology

## Top OTC Trades by Volume

Companies	Last Close	% WTD	Total Volume for Week	Value Traded for Week(KD)
First Qatar Real Estate Development	14.5	-3%	812,141	11,805
Oqyana real estate company	2.1	0%	412,105	865
United Foodstuff Industries Group Co.	150	50%	112,638	16,896
Orient Real Estate Investment Company	34	-62%	92,320	3,139
National Pharmaceutical Industries Company	20.6	2%	58,996	1,215

## Most Active by Volume Traded

Company Name	Volume traded for the week (million)
Arzan Financial Group for Financing and Investment KPSC	198.9
Al Madina for Finance and Investment Co KSCP	122.5
International Financial Advisors KPSC	91.7
Alimtiarz Investment Group Co KSCP	70.1
IFA Hotels and Resorts Co KSCP	63.7

## Top Losers

Company Name	M Cap (KD mn)	WTD %
First Investment Co KSCP	26.0	-38.0
National Petroleum Services Company KSCP	89.0	-14.4
Al Deera Holding Co KPSC	7.3	-13.4
Credit Rating and Collection Company KSCP	4.5	-10.5
Gulf Insurance Group KSCP	124.1	-10.4

## Sector Liquidity

Sector	ADVT for the week (KD)	ADVT for the month (KD)	Weekly ADVT/Monthly ADVT	Sector Beta
Banks	14,500,005	16,877,800	0.8x	1.1
Financial Services	13,333,028	13,892,252	0.9x	0.7
Industrials	6,891,495	5,277,862	1.3x	1.0
Real estate	4,465,713	4,596,714	0.9x	0.8
Telecom	2,093,892	1,978,429	1.0x	0.9
Oil & Gas	1,738,273	675,058	2.5x	0.4
Consumer Services	798,133	1,050,180	0.7x	0.6
Basic Materials	360,791	506,327	0.7x	0.8
Consumer Goods	276,794	345,203	0.8x	0.3
Insurance	77,245	163,301	0.4x	0.1
Technology	-	51,909	0x	0.1
Healthcare	-	734	0x	0.0

Note: Sector beta computed by regressing 3year weekly returns on Kuwait all share index. ADVT – Average Daily Value Traded

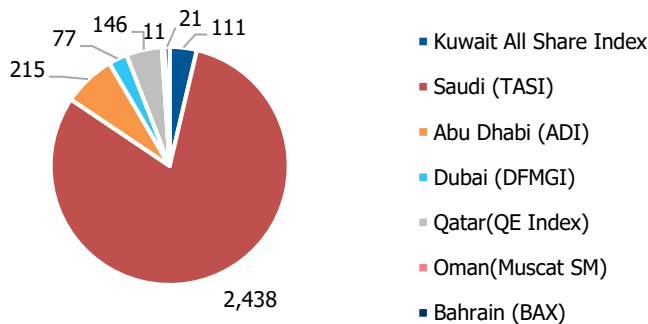
## Kuwait Sector Performance & Valuation

Indicators	M. Cap (KD Mn)	Last Close	Volume (mn)	Value (KD mn)	% WTD	% MTD	% YTD	P/E	P/B	P/S	EV/EBITDA	% of Total M.Cap
<b>Banking</b>	<b>19,294</b>	<b>1,282</b>	<b>217.4</b>	<b>72.5</b>	<b>-0.1</b>	<b>-1.8</b>	<b>1.6</b>	<b>28.1</b>	<b>1.9</b>	<b>5.6</b>	<b>13.0</b>	<b>57.46</b>
National Bank of Kuwait SAKP	5,696.7	832.0	19.5	16.3	-0.7	-4.7	-1.0	25.7	1.5	5.8	16.1	16.96
Kuwait Finance House KSCP	5,522.8	720.0	20.8	15.0	0.0	-0.3	6.4	37.5	2.8	6.2	13.7	16.45
Ahli United Bank BSC	2,245.2	234.0	65.1	15.1	2.2	3.5	3.1	13.7	1.6	4.7	14.6	6.69
<b>Telecommunications</b>	<b>3,503</b>	<b>1,143</b>	<b>61.9</b>	<b>10.5</b>	<b>-1.0</b>	<b>-2.9</b>	<b>3.7</b>	<b>21.8</b>	<b>2.0</b>	<b>1.5</b>	<b>5.8</b>	<b>10.43</b>
Mobile Telecommunications Company KSCP	2,690.2	622.0	14.8	9.3	-1.3	-2.8	2.6	13.8	2.1	1.6	6.3	8.01
National Mobile Telecommunications Co KSCP	332.5	660.0	0.3	0.2	0.6	-3.8	5.3	97.6	0.6	0.6	2.7	0.99
Kuwait Telecommunications Company KSCP	463.2	928.0	0.2	0.1	-0.2	-2.8	8.9	14.4	2.1	1.6	5.5	1.38
<b>Industrials</b>	<b>3,321</b>	<b>931</b>	<b>123.1</b>	<b>34.5</b>	<b>0.3</b>	<b>-0.4</b>	<b>4.5</b>	<b>17.8</b>	<b>1.5</b>	<b>3.0</b>	<b>10.1</b>	<b>9.89</b>
Agility Public Warehousing Co KSCP	1,473.2	727.0	4.4	3.3	-2.9	-3.5	7.5	24.3	1.2	0.9	10.8	4.39
Human Soft Holding Company KSCP	480.2	3,930	3.4	13.2	8.6	8.0	3.4	12.7	4.1	7.0	9.9	1.43
ALAFCO Aviation Lease and Finance Co KSCP	198.9	209.0	7.0	1.5	-0.9	-1.4	-3.2	N.A	0.7	1.8	11.2	0.59
<b>Financial Services</b>	<b>2,765</b>	<b>988.0</b>	<b>804.5</b>	<b>66.7</b>	<b>0.9</b>	<b>1.6</b>	<b>6.3</b>	<b>7.4</b>	<b>1.3</b>	<b>5.5</b>	<b>8.7</b>	<b>8.23</b>
GFH Financial Group BSC	195.8	55.0	3.5	0.2	3.4	1.3	14.3	13.0	0.6	2.6	34.9	0.58
Kuwait Projects Company Holding KSCP	341.8	171.0	10.1	1.8	-1.7	1.8	7.5	18.1	0.9	0.4	88.5	1.02
Egypt Kuwait Holding Co SAE	351.3	350.0	0.4	0.1	10.4	10.1	-1.4	11.5	2.3	2.1	9.3	1.05
<b>Real Estate</b>	<b>2,133</b>	<b>992.0</b>	<b>303.4</b>	<b>22.3</b>	<b>0.8</b>	<b>-1.6</b>	<b>4.1</b>	<b>22.8</b>	<b>1.1</b>	<b>11.4</b>	<b>21.0</b>	<b>6.35</b>
Mabanee Company KPSC	762.2	690.0	4.2	2.9	4.4	-2.0	5.0	35.9	1.6	11.6	39.3	2.27
Salhia Real Estate Co KSCP	283.4	553.0	2.1	1.2	3.2	5.3	9.9	12.8	1.6	14.7	70.8	0.84
Tamdeen Real Estate Co KPSC	106.2	246.0	0.5	0.1	-1.2	-2.0	-8.9	N.A	0.6	6.6	277.7	0.32
<b>Basic Materials</b>	<b>865</b>	<b>971</b>	<b>3.6</b>	<b>1.8</b>	<b>2.3</b>	<b>3.4</b>	<b>8.0</b>	<b>22.0</b>	<b>1.4</b>	<b>3.9</b>	<b>6.3</b>	<b>2.58</b>
Boubyan Petrochemical Company KSCP	395.1	739.0	1.5	1.1	5.1	10.6	15.5	27.4	1.8	5.7	153.1	1.18
Qurain Petrochemical Industries Company KSCP	384.5	350.0	2.0	0.7	0.0	-2.2	3.6	16.7	0.9	1.6	12.5	1.14
Al-Kout Industrial Projects Company KPSC	64.7	642.0	N.A	N.A	0.0	0.0	-4.9	27.2	2.3	2.3	9.1	0.19
<b>Insurance</b>	<b>450</b>	<b>1,192</b>	<b>4.5</b>	<b>0.4</b>	<b>-5.0</b>	<b>-14.3</b>	<b>3.1</b>	<b>10.1</b>	<b>1.0</b>	<b>1.4</b>	<b>5.7</b>	<b>1.34</b>
Gulf Insurance Group KSCP	124.1	617.0	0.1	0.1	-10.4	-27.2	-23.5	7.4	1.1	0.6	3.4	0.37
Al Ahleia Insurance Co SAKP	93.6	446.0	0.1	0.1	-4.1	-3.9	-5.1	8.1	0.8	1.1	7.1	0.28
Kuwait Insurance Company SAKP	78.5	405.0	0.1	0.0	0.0	1.5	5.2	6.7	0.8	2.8	5.9	0.23
<b>Consumer Services</b>	<b>424</b>	<b>820</b>	<b>71.1</b>	<b>4.0</b>	<b>1.4</b>	<b>-2.9</b>	<b>0.2</b>	<b>9.6</b>	<b>2.8</b>	<b>2.8</b>	<b>6.4</b>	<b>1.26</b>
Jazeera Airways Co KSCP	131.5	658.0	1.4	0.9	6.3	-4.8	-9.9	N.A	6.1	2.5	513.1	0.39
Kuwait National Cinema Company KPSC	76.3	755.0	N.A	N.A	0.0	-4.2	0.7	N.A	1.0	7.6	24.4	0.23
IFA Hotels and Resorts Co KSCP	23.4	36.8	63.7	2.5	-6.8	-7.1	88.7	N.A	7.3	1.2	N.A	0.07
<b>Healthcare</b>	<b>402</b>	<b>811</b>	<b>N.A</b>	<b>N.A</b>	<b>-0.1</b>	<b>-0.6</b>	<b>-1.9</b>	<b>36.4</b>	<b>5.8</b>	<b>4.3</b>	<b>17.2</b>	<b>1.20</b>
Al-Maidan Clinic for Oral Health Services Co KSCP	309.9	1,240	N.A	N.A	0.0	0.0	0.0	39.3	6.9	5.4	18.7	0.92
Advanced Technology Co KSCP	81.3	542.0	N.A	N.A	0.0	0.0	-4.9	30.2	1.4	0.6	14.0	0.24
Yiaco Medical Company KPSC	10.9	635.0	0.0	0.0	-4.5	-18.6	-24.4	273.7	5.3	0.3	N.A	0.03
<b>Oil &amp; Gas</b>	<b>256</b>	<b>1,226</b>	<b>71.8</b>	<b>8.7</b>	<b>-7.7</b>	<b>-1.0</b>	<b>-4.0</b>	<b>11.0</b>	<b>1.3</b>	<b>1.8</b>	<b>5.2</b>	<b>0.76</b>
Independent Petroleum Group KSCP	93.2	495.0	0.1	1.2	-0.8	3.1	4.2	13.0	0.9	0.2	51.1	0.28
National Petroleum Services Company KSCP	89.0	890.0	0.1	0.2	-14.4	-10.2	-15.2	10.8	2.2	3.0	6.9	0.26
Energy House Holding Company KSCP	21.0	28.0	0.7	N.A	-6.0	1.8	-1.4	N.A	0.9	5.8	N.A	0.06
<b>Consumer Goods</b>	<b>229</b>	<b>748</b>	<b>2.8</b>	<b>1.4</b>	<b>0.1</b>	<b>0.9</b>	<b>0.2</b>	<b>24.3</b>	<b>1.5</b>	<b>0.7</b>	<b>11.2</b>	<b>0.68</b>
Mezzan Holding Company KSCP	183.9	591.0	2.1	0.0	0.3	1.0	-2.8	26.6	1.6	0.7	10.3	0.55
Livestock Transport and Trading Co KPSC	43.9	203.0	0.8	0.1	-1.0	0.5	15.3	15.0	1.0	0.6	15.3	0.13
Danah Al Safat Foodstuff Co KPSC	1.3	11.8	N.A	0.0	0.0	0.0	0.0	N.A	0.6	1.5	N.A	0.00
<b>Technology</b>	<b>19</b>	<b>673.0</b>	<b>0.6</b>	<b>0.1</b>	<b>4.3</b>	<b>28.3</b>	<b>33.9</b>	<b>N.A</b>	<b>0.8</b>	<b>12.4</b>	<b>3.6</b>	<b>0.06</b>
Automated Systems Co KPSC	9.2	92.5	0.6	0.1	4.3	28.3	33.9	N.A	0.7	2.8	N.A	0.03
Osos Holding Group Co KSCP	9.7	92.0	2.6	0.2	2.8	2.2	2.2	N.A	0.8	21.5	7.0	0.03

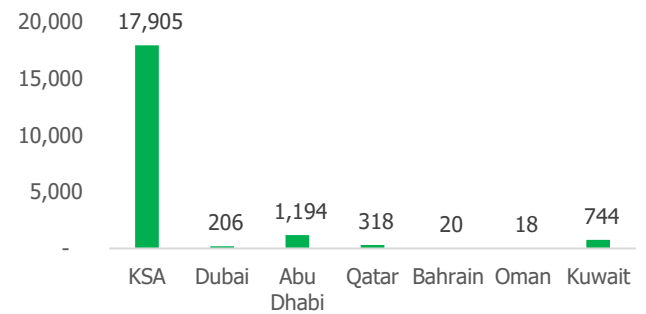
### GCC Markets Watch

Indicators	Last Close	WTD %	MTD %	YTD %	P/E TTM	P/B	Div. Yield
Kuwait All Share PR Index	5,691	-0.1	-1.5	2.6	24.0	1.9	2.7
Saudi (TASI)	9,024	0.9	3.7	3.9	22.6	2.2	3.5
Abu Dhabi (ADI)	5,643	-0.4	0.9	11.8	16.3	1.5	4.3
Dubai (DFMGI)	2,576	-2.2	-2.9	3.4	12.6	0.8	3.0
Qatar (QE Index)	10,273	-2.4	-1.9	-1.6	17.6	1.3	3.2
Oman (Muscat SM)	3,566	0.2	-2.4	-2.5	9.1	0.6	6.3
Bahrain (BAX)	1,481	1.3	1.3	-0.6	9.1	0.7	N.A
S&P GCC Composite	119	0.1	2.0	4.0	14.8	2.0	3.4

### GCC Index Market Capitalization (USD bn)



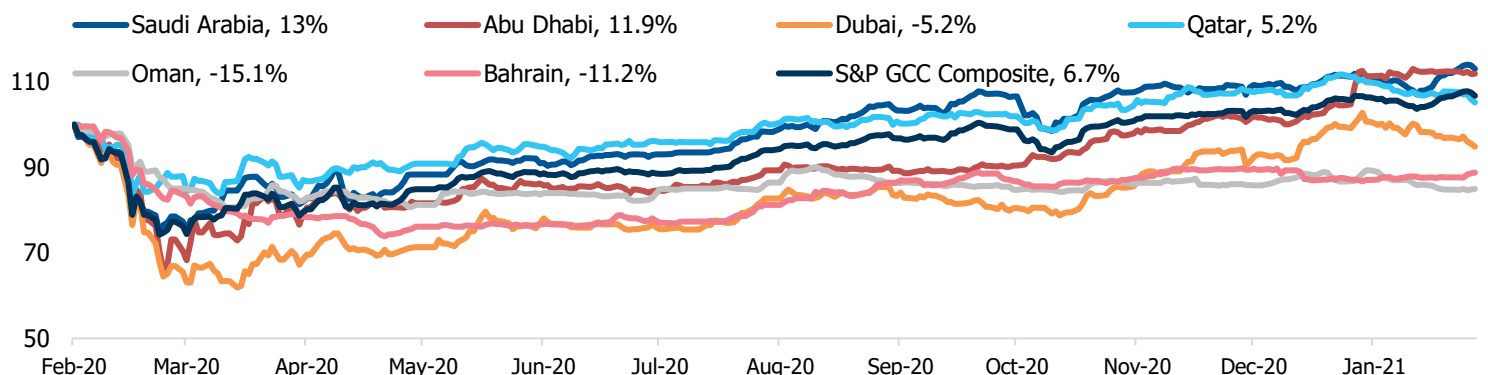
### GCC Weekly Traded Value (USD mn)



### GCC Blue Chip Watch

Companies	M.Cap (USD Bn)	Last	WTD (%)	MTD (%)	YTD (%)	PE (TTM)	PB (TTM)	DY	PAT(mn) Q4 2020	%Gr YoY
<b>Saudi Arabia</b>										
Saudi Aramco	1853.1	34.8	0.6	0.3	-0.7	33.4	6.9	3.3	N.A	N.A
SABIC	81.6	102.0	-0.2	1.2	0.6	7306.6	1.8	3.6	2,223	-3.5
STC	61.5	115.4	-0.2	2.3	8.9	20.8	3.6	3.5	2,682	0.2
Al-Rajhi Bank	55.6	83.4	4.3	15.4	13.3	19.7	3.6	3.6	3,121	0.5
NCB	36.3	45.4	0.3	8.0	4.7	12.4	1.7	5.1	3,359	0.0
<b>UAE</b>										
ETISALAT	46.7	19.7	-0.7	-0.1	16.8	19.3	3.7	4.0	N.A	N.A
First Abu Dhabi Bank	44.3	14.9	-0.5	0.8	15.5	16.1	1.5	4.9	1,597	43.4
Ad Natil Energy	42.6	1.4	-3.5	-4.1	-3.5	53.5	2.6	1.0	3,230	0.0
Emirates Nbd	19.7	11.5	-1.7	-1.3	11.2	11.7	0.9	3.4	1,316	-0.3
Ad Commercial	12.4	6.5	-2.1	1.6	5.5	13.0	0.8	5.7	1,026	0.0
<b>Qatar</b>										
QNB	41.5	16.4	-1.3	-5.0	-4.5	13.7	1.6	2.8	2,516	-0.2
Industries Qatar	20.1	12.1	3.7	1.7	12.2	37.1	2.2	2.7	1,026	0.9
Ezdan Holding	12.3	1.7	-0.4	1.5	-3.5	5262.5	1.4	0.0	N.A	N.A
Qa Islamic Bk	10.8	16.7	0.1	2.8	-0.8	13.8	1.8	2.4	849	0.0
Masraf Al Rayan	8.9	4.3	0.5	1.3	-2.9	14.8	2.3	4.0	513	0.0

### GCC Market Performance Chart



Note: Kuwait Index has been excluded from the chart

## In News

- Kuwait's Emir has issued a decree on Wednesday, suspending parliament's sessions for one month as of Feb. 18. The move follows a standoff between the elected assembly and the appointed government that led the cabinet to resign last month.
- Kuwait's health minister has warned of tougher restrictions in the country if people fail to adhere to the COVID-19 precautionary measures currently in place. The warning comes amidst a rise in the number of coronavirus cases in the country in recent weeks.
- Saudi Arabia's annual inflation rate rose to 5.7 percent year-on-year in January compared with 5.3 percent y-o-y in December, driven mainly by higher food and transportation prices.
- International companies that want to participate in the Saudi government's investment opportunities will be required to establish regional headquarters in the kingdom as of 2024 or they would not be awarded government contracts

## Financial Results

- Mabanee Company - Q4 net profit KD 12.1mn vs profit of KD 14.1mn, year ago.
- Human Soft Holding -Q4 net profit KD 13.4mn vs KD 9.8mn, year ago.
- Noor Financial Investment Co– Q4 net profit KD 2.6mn vs KD 2.2mn, year ago.
- Alrai Media Group Co- Q4 net profit KD 461,658 vs loss of KD 3.3mn, year ago.
- ALAFCO Aviation Lease and Finance– Q4 net loss at KD 1.7mn vs profit KD 9mn, year ago.

## CONTACT DETAILS

---

Mr. Talal Al-Yousef  
Deputy Manager – Asset Management  
Tel: +965-22675248  
E-mail: [research@alsafatinvest.com](mailto:research@alsafatinvest.com)

This report has been prepared and issued by Al Safat Investment Company. The report is owned by Al Safat and is privileged and proprietary and is subject to copyrights. Sale of any copies of this report is strictly prohibited. This report cannot be quoted without the prior written consent of Al Safat. Any user after obtaining Al Safat permission to use this report must clearly mention the source as "Al Safat". This Report is intended to be circulated for general information only and should not to be construed as an offer to buy or sell or a solicitation of an offer to buy or sell any financial instruments or to participate in any particular trading strategy in any jurisdiction. The information and statistical data herein have been obtained from sources we believe to be reliable but in no way are warranted by us as to its accuracy or completeness. Al Safat has no obligation to update, modify or amend this report. For further information, please contact Al Safat at P.O. Box 20133 Al Safat 13062 Tel. +965 1877777