

KUWAIT BOURSA WEEKLY REPORT

From 28 June
To 02 July, 2026

(965) 18 777 77

Al-Safat Tower, Hawalli, Beirut St.

alsafatinvest.com

research@alsafatinvest.com

alsafatinvestment

al-safat-investment-company



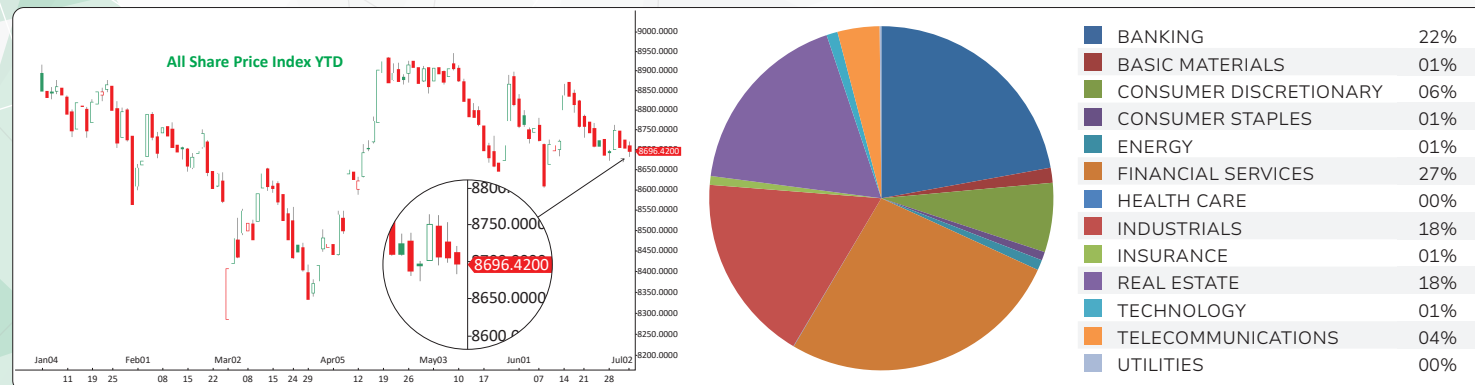
شركة الصفاة للاستثمار
AL SAFAT INVESTMENT COMPANY

| Market | M. Cap (KD ml) | Last Close | WTD % | MTD % | YTD % | Quantity Traded | Value Traded | No. of Trades | P/E | P/B | % of Total M. Cap |
|----------------|----------------|------------|-------|-------|-------|-----------------|--------------|---------------|------|-----|-------------------|
| Premier Market | 44,345 | 9,092.64 | -0.4% | 0.1% | -4.3% | 518,346,170 | 207,583,486 | 47,068 | 19.8 | 1.8 | 82.1% |
| Main Market | 9,687 | 8,955.64 | 2.4% | -1.2% | 7.9% | 827,325,849 | 164,484,807 | 58,150 | 15.1 | 1.3 | 17.9% |
| All Share | 54,032 | 8,696.42 | 0.1% | -0.1% | -2.4% | 1,345,672,019 | 372,068,294 | 105,218 | 16.8 | 1.4 | 100% |

| Market | M. Cap (KD ml) | Last Close | WTD % | MTD % | YTD % | Quantity Traded | Value Traded | No. of Trades | P/E | P/B | % of Total M. Cap |
|------------------------|----------------|------------|-------|--------|--------|-----------------|--------------|---------------|------|-----|-------------------|
| Banking | 31,418 | 2,065.46 | -0.2% | 0.3% | -4.8% | 154,846,653 | 82,422,645 | 19,045 | 22.9 | 1.4 | 58.15% |
| Basic Materials | 482 | 854.77 | -0.8% | -0.6% | 2.5% | 7,632,487 | 5,242,740 | 728 | 13.5 | 1.6 | 0.89% |
| Consumer Discretionary | 1,678 | 2,285.56 | -3.0% | 0.0% | -4.1% | 47,196,380 | 24,204,354 | 8,523 | 18.3 | 1.7 | 3.11% |
| Consumer Staples | 357 | 1,177.27 | -2.3% | 1.2% | -13.4% | 5,659,989 | 2,968,683 | 541 | 18.2 | 1.9 | 0.66% |
| Energy | 502 | 1,786.01 | -0.5% | 0.0% | 2.9% | 14,382,783 | 3,615,138 | 1,551 | 12.2 | 2.0 | 0.93% |
| Financial Services | 6,745 | 1,761.50 | 0.0% | 0.7% | -8.3% | 564,954,729 | 99,213,988 | 27,943 | 18.6 | 1.3 | 12.48% |
| Health Care | 324 | 675.70 | 3.5% | 0.0% | 14.3% | 191,126 | 143,024.570 | 237 | 20.8 | 2.4 | 0.60% |
| Industrials | 2,541 | 756.36 | 0.0% | 0.0% | -0.2% | 167,940,753 | 65,879,286 | 16,183 | 18.1 | 1.4 | 4.70% |
| Insurance | 1,047 | 2,516.54 | 22.9% | -13.2% | 29.2% | 16,107,699 | 3,066,883 | 1,826 | 12.7 | 1.3 | 1.94% |
| Real Estate | 4,350 | 2,017.91 | -0.1% | 0.6% | -0.6% | 334,491,878 | 66,152,995 | 20,980 | 18.6 | 1.2 | 8.05% |
| Technology | 70 | 5,092.50 | -0.1% | -4.8% | 434.4% | 5,478,501 | 3,875,573 | 2,170 | NM | 6.3 | 0.13% |
| Telecommunications | 4,362 | 1,424.76 | -0.6% | -1.0% | 16.3% | 22,802,247 | 14,715,313 | 5,031 | 11.3 | 2.6 | 8.07% |
| Utilities | 156 | 373.68 | 0.0% | -0.7% | -4.7% | 3,986,794 | 567,672 | 460 | 9.7 | 1.1 | 0.29% |

The Market Summary

- Premier Market trading volume and value declined by 35% and 32%, respectively. In the Main Market, trading volume fell by 6%, while trading value increased by 15%.
- The Premier Market Index showed a slight improvement, while the Main Market Index continued its downward movement.
- Technically, the All Share Index closed at 8,696, with support levels at 8,694, 8,677, and 8,617, while resistance stands at 8,711. The Premier Market Index closed at 9,092, with support levels at 9,080, 9,045, and 9,011, and resistance at 9,132. The Main Market Index closed at 8,955, with support levels at 8,923, 8,871, and 8,822, and resistance at 9,004.



Top Gainers

| Stock | Last Close | Change % | Volume | Value | Trades |
|---------|------------|----------|------------|------------|--------|
| GINS | 1,688 | %60.92 | 110,916 | 156,159 | 246 |
| ACICO | 590 | %32.88 | 57,887,871 | 30,529,593 | 6,577 |
| ATC | 635 | %26.75 | 114,495 | 68,986 | 82 |
| GIH | 589 | %19.47 | 12,714,075 | 7,096,045 | 1,738 |
| Shuaiba | 234 | %17.00 | 4,106,159 | 970,691 | 851 |

Top Losers

| Stock | Last Close | Change % | Volume | Value | Trades |
|----------|------------|----------|------------|-----------|--------|
| THURAYA | 340 | -23.60% | 10,217,258 | 3,712,524 | 3,183 |
| ALKOUT | 796 | -11.06% | 4,351 | 3,591 | 23 |
| OULAFUEL | 319 | -10.39% | 26,434,735 | 8,887,268 | 3,886 |
| SOOR | 281 | -9.35% | 893,244 | 260,356 | 393 |
| KCEM | 406 | -7.52% | 1,873,502 | 792,073 | 226 |

Top Volume

| Stock | Last Close | Change % | Volume | Value | Trades |
|----------|------------|----------|------------|------------|--------|
| KPPC | 127 | -0.78% | 92,785,804 | 12,140,694 | 2,324 |
| ACICO | 590 | 32.88% | 57,887,871 | 30,529,593 | 6,577 |
| EKTTITAB | 35 | -0.85% | 57,572,219 | 2,031,736 | 2,026 |
| KPROJ | 77.2 | 0.52% | 56,492,725 | 4,372,010 | 1,043 |
| AQAR | 96 | 0.74% | 52,410,795 | 5,144,443 | 1,911 |

Top Value

| Stock | Last Close | Change % | Volume | Value | Trades |
|-------|------------|----------|------------|------------|--------|
| ACICO | 590 | 32.88% | 57,887,871 | 30,529,593 | 6,577 |
| KFH | 773 | 0.13% | 38,942,969 | 30,003,397 | 8,260 |
| NBK | 805 | -0.25% | 28,095,568 | 22,688,147 | 3,293 |
| KPPC | 127 | -0.78% | 92,785,804 | 12,140,694 | 2,324 |
| ARKAN | 307 | 11.64% | 37,443,268 | 11,256,979 | 2,473 |