

KUWAIT BOURSA WEEKLY REPORT

From 14 June
To 18 June, 2026

(965) 18 777 77

Al-Safat Tower, Hawalli, Beirut St.

alsafatinvest.com

research@alsafatinvest.com

alsafatinvestment

al-safat-investment-company

الصفاة
AL SAFAT

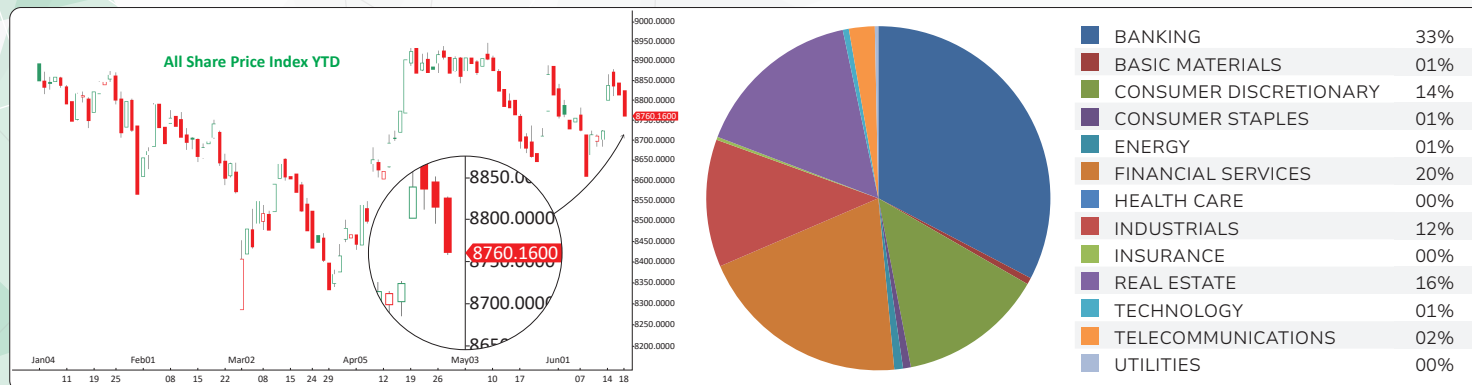
شركة الصفاة للاستثمار
AL SAFAT INVESTMENT COMPANY

Market	M. Cap (KD ml)	Last Close	WTD %	MTD %	YTD %	Quantity Traded	Value Traded	No. of Trades	P/E	P/B	% of Total M. Cap
Premier Market	44,279	9,220.73	0.4%	-0.9%	-2.9%	1,153,975,738	460,704,805	67,595	20.3	1.8	82.7%
Main Market	9,263	8,732.18	0.7%	0.8%	5.2%	1,322,278,727	193,915,134	68,214	15.3	1.3	17.3%
All Share	53,542	8,760.16	0.4%	-0.6%	-1.7%	2,476,254,465	654,619,939	135,809	16.1	1.4	100%

Market	M. Cap (KD ml)	Last Close	WTD %	MTD %	YTD %	Quantity Traded	Value Traded	No. of Trades	P/E	P/B	% of Total M. Cap
Banking	31,664	2,082.07	-0.2%	-1.7%	-4.1%	394,218,943	213,956,609	21,479	22.7	1.4	59.14%
Basic Materials	493	874.34	3.2%	2.2%	4.9%	5,966,159	4,087,883	802	13.9	1.6	0.92%
Consumer Discretionary	1,740	2,370.36	5.3%	1.7%	-0.5%	208,056,023	89,375,044	23,119	19.3	1.8	3.25%
Consumer Staples	372	1,223.67	1.5%	-4.3%	-10.0%	16,656,330	4,819,290	1,199	18.9	2.0	0.69%
Energy	509	1,809.88	-1.1%	-2.4%	4.3%	21,079,856	5,382,105	2,513	12.6	2.0	0.95%
Financial Services	6,007	1,803.75	1.1%	0.7%	-6.1%	734,996,038	131,073,263	36,949	19.4	1.3	11.22%
Health Care	273	568.52	1.8%	0.8%	-3.8%	9,287	4,763.241	19	17.5	2.0	0.51%
Industrials	2,564	762.89	3.5%	0.9%	0.7%	340,038,365	78,428,747	16,628	19.2	1.4	4.79%
Insurance	781	1,857.37	0.4%	-4.8%	-4.6%	12,420,041	1,851,446	1,258	11.4	1.0	1.46%
Real Estate	4,454	2,067.21	0.2%	2.0%	1.9%	698,973,802	103,909,150	25,617	19.3	1.2	8.32%
Technology	65	4,750.57	18.1%	41.0%	398.5%	6,256,557	3,743,291	1,613	NM	5.9	0.12%
Telecommunications	4,459	1,456.41	-0.3%	1.6%	18.8%	22,903,041	15,864,454	3,511	12.2	2.6	8.33%
Utilities	161	384.21	4.3%	5.0%	-2.0%	14,680,023	2,123,894	1,102	10.0	1.1	0.30%

The Market Summary

- Premier Market trading volume and value surged by 120%, while the Main Market recorded increases of 34% in volume and 36% in value.
- Both indices retreated following a strong start to the week, reflecting profit-taking activity after the recent upward momentum.
- Technically, the All Share Index closed at 8,760, with support levels at 8,740, 8,711, and 8,694, while resistance stands at 8,768. The Premier Market Index closed at 9,220, with support levels at 9,216, 9,172, and 9,150, and resistance at 9,258. The Main Market Index closed at 8,732, with support levels at 8,704, 8,658, and 8,613, and resistance at 8,736.



Top Gainers

Stock	Last Close	Change %	Volume	Value	Trades
OULAFUEL	354	%24.65	169,608,859	66,041,780	16,285
MARAKEZ	219	%19.67	18,049,813	3,511,195	2,113
MKHZN	157	%18.94	202,867,289	30,419,217	4,300
GFC	402	%18.24	74,316	27,597	39
ASC	653	%18.08	6,256,557	3,743,291	1,613

Top Losers

Stock	Last Close	Change %	Volume	Value	Trades
KMEFIC	162	-10.00%	14,978,256	2,582,286	948
SENERGY	255	-6.93%	8,171,286	2,172,823	1,190
ARABREC	170	-6.08%	9,023,528	1,596,531	659
NIH	143	-5.92%	12,255,183	1,816,185	840
ALTIJARIA	193	-5.85%	19,448,984	3,940,681	803

Top Volume

Stock	Last Close	Change %	Volume	Value	Trades
NRE	121	-0.82%	291,987,714	36,617,489	3,774
MKHZN	157	18.94%	202,867,289	30,419,217	4,300
OULAFUEL	354	24.65%	169,608,859	66,041,780	16,285
KFH	767.0	-0.90%	144,475,499	112,122,316	9,148
KBT	88	5.24%	131,686,473	12,382,532	5,923

Top Value

Stock	Last Close	Change %	Volume	Value	Trades
KFH	767	-0.90%	144,475,499	112,122,316	9,148
OULAFUEL	354	24.65%	169,608,859	66,041,780	16,285
NBK	819	-0.61%	48,349,540	40,109,941	4,265
NRE	121	-0.82%	291,987,714	36,617,489	3,774
MKHZN	157	18.94%	202,867,289	30,419,217	4,300