

KUWAIT BOURSA WEEKLY REPORT

From 01 June
To 04 June, 2026

(965) 18 777 77

Al-Safat Tower, Hawalli, Beirut St.

alsafatinvest.com

research@alsafatinvest.com

alsafatinvestment

al-safat-investment-company

الصفاة
AL SAFAT

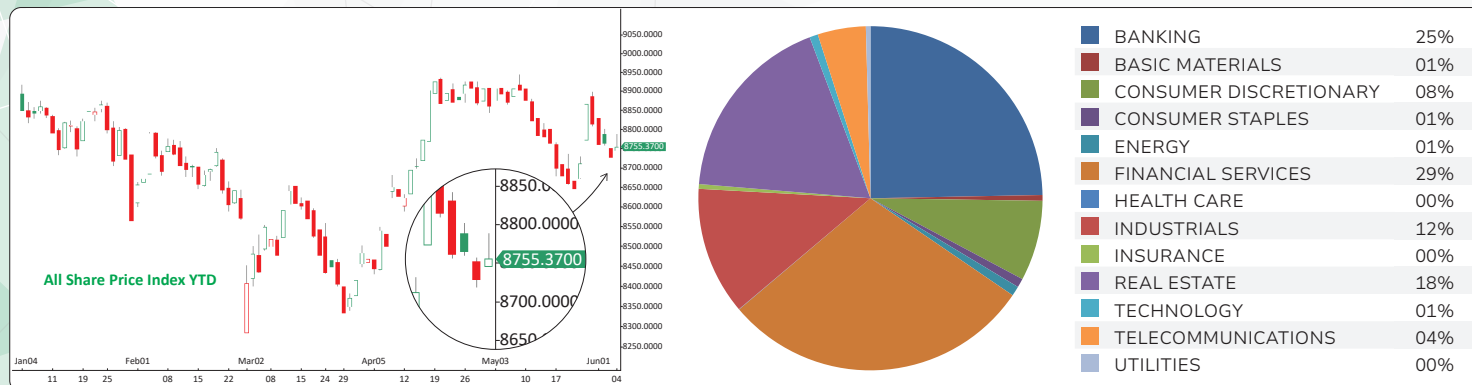
شركة الصفاة للاستثمار
AL SAFAT INVESTMENT COMPANY

Market	M. Cap (KD ml)	Last Close	WTD %	MTD %	YTD %	Quantity Traded	Value Traded	No. of Trades	P/E	P/B	% of Total M. Cap
Premier Market	44,293	9,224.00	-0.9%	-0.9%	-2.9%	559,548,762	231,179,562	51,321	19.6	1.8	82.7%
Main Market	9,237	8,688.29	0.3%	0.3%	4.6%	978,931,047	147,791,843	52,385	15.7	1.2	17.3%
All Share	53,529	8,755.37	-0.7%	-0.7%	-1.7%	1,538,479,809	378,971,405	103,706	16.1	1.4	100%

Market	M. Cap (KD ml)	Last Close	WTD %	MTD %	YTD %	Quantity Traded	Value Traded	No. of Trades	P/E	P/B	% of Total M. Cap
Banking	31,853	2,094.31	-1.2%	-1.2%	-3.5%	155,812,635	93,601,854	21,793	23.0	1.4	59.51%
Basic Materials	486	860.68	0.6%	0.6%	3.2%	3,111,836	2,039,107	671	13.4	1.6	0.91%
Consumer Discretionary	1,677	2,283.71	-2.0%	-2.0%	-4.2%	56,044,806	28,596,271	6,582	16.6	1.4	3.13%
Consumer Staples	369	1,215.59	-5.0%	-5.0%	-10.6%	3,492,819	3,166,639	448	18.9	1.9	0.69%
Energy	513	1,825.54	-1.5%	-1.5%	5.2%	16,975,395	3,457,700	1,771	12.2	2.0	0.96%
Financial Services	5,974	1,796.07	0.2%	0.2%	-6.5%	659,437,691	110,993,661	30,706	18.0	1.3	11.16%
Health Care	266	553.83	-1.8%	-1.8%	-6.3%	206,999	121,472,710	63	24.4	1.9	0.50%
Industrials	2,527	746.39	-1.3%	-1.3%	-1.5%	162,332,020	45,581,685	14,239	18.7	1.4	4.72%
Insurance	780	1,853.08	-5.0%	-5.0%	-4.9%	11,497,510	1,672,828	1,275	11.1	1.0	1.46%
Real Estate	4,444	2,061.75	1.7%	1.7%	1.6%	425,056,239	67,961,510	17,971	18.5	1.2	8.30%
Technology	50	3,608.40	7.1%	7.1%	278.6%	6,300,761	3,012,610	1,600	NM	4.5	0.09%
Telecommunications	4,436	1,448.89	1.0%	1.0%	18.2%	26,800,266	17,144,504	5,137	12.1	2.6	8.29%
Utilities	156	373.68	2.2%	2.2%	-4.7%	11,410,832	1,621,565	1,450	9.7	1.1	0.29%

The Market Summary

- Premier and Main market trading volume and value declined by 33% and 36%, and by 6% and 12%, respectively.
- The Premier Market Index continues to trend downward, while the Main Market Index is moving sideways.
- Technically, the All Share Index closed at 8,755, with support levels at 8,740, 8,711, and 8,694, while resistance stands at 8,768. The Premier Market Index closed at 9,224, with support levels at 9,216, 9,172, and 9,132, while resistance stands at 9,258. The Main Market Index closed at 8,658, with support levels at 8,658, 8,613, and 8,583, while resistance stands at 8,704.



Top Gainers

Stock	Last Close	Change %	Volume	Value	Trades
SPEC	224	%22.40	13,983,333	2,889,779	866
ERESCO	127	%15.45	41,109,599	5,018,877	1,789
NRE	121	%12.04	217,428,828	25,463,805	4,712
MANAZEL	53	%9.56	31,050,227	1,580,222	1,264
ALOOLA	140	%9.38	81,447,649	11,217,535	2,136

Top Losers

Stock	Last Close	Change %	Volume	Value	Trades
NICBM	227	-17.15%	10,791,367	2,418,689	1,055
GINs	770	-11.49%	31,675	24,796	21
EQUIPMENT	186	-9.71%	11,826,531	2,232,576	1,818
JAZEERA	1,631	-8.63%	1,418,134	2,463,920	692
ALSAFAT	221	-5.56%	31,877,857	7,104,367	2,325

Top Volume

Stock	Last Close	Change %	Volume	Value	Trades
NRE	121	12.04%	217,428,828	25,463,805	4,712
GFH	186	-0.53%	85,955,379	15,968,075	3,460
ALOOLA	140	9.38%	81,447,649	11,217,535	2,136
ALIMTIAZ	71.4	6.41%	66,230,506	4,653,707	2,628
CLEANING	292	7.75%	56,198,566	15,778,566	3,224

Top Value

Stock	Last Close	Change %	Volume	Value	Trades
KFH	776	-0.51%	53,521,562	41,570,023	9,632
NBK	830	-2.47%	37,611,342	31,499,071	5,245
NRE	121	12.04%	217,428,828	25,463,805	4,712
GFH	186	-0.53%	85,955,379	15,968,075	3,460
CLEANING	292	7.75%	56,198,566	15,778,566	3,224