

KUWAIT BOURSA WEEKLY REPORT

From 17 May
To 21 May, 2026

(965) 18 777 77

Al-Safat Tower, Hawalli, Beirut St.

alsafatinvest.com

research@alsafatinvest.com

alsafatinvestment

al-safat-investment-company

الصفاة
AL SAFAT

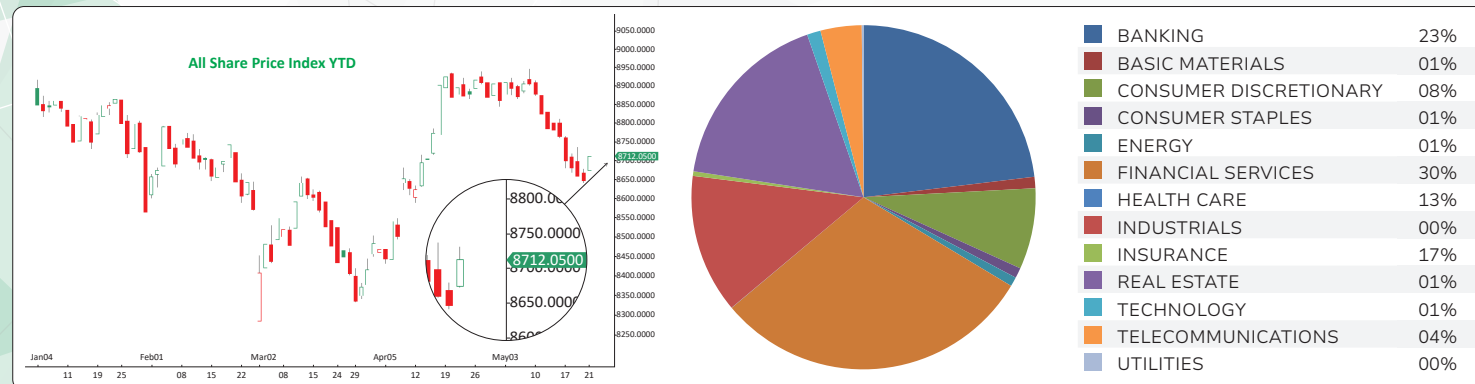
شركة الصفاة للاستثمار
AL SAFAT INVESTMENT COMPANY

Market	M. Cap (KD ml)	Last Close	WTD %	MTD %	YTD %	Quantity Traded	Value Traded	No. of Trades	P/E	P/B	% of Total M. Cap
Premier Market	44,129	9,188.08	-1.0%	-2.1%	-3.3%	770,282,385	281,112,394	53,360	19.2	1.7	82.8%
Main Market	9,148	8,599.62	1.3%	0.3%	3.6%	1,243,975,571	197,669,505	61,826	15.3	1.2	17.2%
All Share	53,277	8,712.05	-0.6%	-1.7%	-2.2%	2,014,257,956	478,781,899	115,186	15.8	1.4	100%

Market	M. Cap (KD ml)	Last Close	WTD %	MTD %	YTD %	Quantity Traded	Value Traded	No. of Trades	P/E	P/B	% of Total M. Cap
Banking	31,914	2,098.52	-0.8%	-2.3%	-3.3%	233,667,508	110,580,655	22,252	22.9	1.4	59.90%
Basic Materials	468	828.82	0.4%	2.4%	-0.6%	8,082,358	5,110,346	806	13.7	1.6	0.88%
Consumer Discretionary	1,672	2,277.42	-0.5%	-3.1%	-4.4%	122,511,539	36,440,792	8,643	16.1	1.5	3.14%
Consumer Staples	389	1,282.86	-2.8%	-6.9%	-5.6%	4,287,204	4,593,149	310	20.0	2.0	0.73%
Energy	518	1,844.63	-0.7%	2.1%	6.3%	21,150,791	4,192,863	1,628	16.6	2.1	0.97%
Financial Services	5,909	1,770.96	-0.7%	-1.6%	-7.8%	794,665,273	144,991,545	34,091	20.0	1.3	11.09%
Health Care	263	548.89	-2.8%	-1.4%	-7.1%	164,998	92,858.870	131	24.0	1.9	0.49%
Industrials	2,506	740.37	-1.3%	-1.3%	-2.3%	199,126,816	62,598,356	15,174	15.3	1.4	4.70%
Insurance	787	1,873.62	1.5%	-2.8%	-3.8%	11,716,752	2,071,682	1,347	11.9	1.0	1.48%
Real Estate	4,285	1,989.15	-1.0%	-2.0%	-2.0%	572,382,725	82,681,559	22,505	17.5	1.1	8.04%
Technology	45	3,273.75	24.0%	63.0%	243.5%	14,587,912	6,134,887.79	2,746	NM	4.0	0.08%
Telecommunications	4,361	1,424.29	1.6%	3.1%	16.2%	26,332,319	18,490,566	4,964	11.9	2.6	8.19%
Utilities	158	378.95	-2.0%	-2.7%	-3.4%	5,581,761	802,638	589	9.8	1.1	0.30%

The Market Summary

- Premier and Main market volume and value declined by 7% and 4%, and 13% and 9%, respectively.
- Both indexes ended the session on a positive note despite the overall downward movement.
- Technically, the All Share Index closed at 8712, with support levels at 8711, 8694, and 8677, while resistance stands at 8740. The Premier Index closed at 9188, with support levels at 9172, 9150, and 9132, while resistance stands at 9216. The Main Index closed at 8599, with support levels at 8583, 8539, and 8499, while resistance stands at 8613.



Top Gainers

Stock	Last Close	Change %	Volume	Value	Trades
ASC	450	%23.97	14,587,912	6,134,888	2,746
TAMINV	1,285	%18.98	205	253	2
TIJARA	143	%17.21	25,503,053	3,404,633	1,908
OSOUL	399	%10.83	20,586,566	7,957,966	1,874
FACIL	299	%8.33	1,329,200	392,940	90

Top Losers

Stock	Last Close	Change %	Volume	Value	Trades
NIND	237	-7.42%	33,370,941	8,140,379	1,274
PCEM	573	-7.28%	861,749	506,617	328
ARGAN	125	-6.72%	21,694,478	2,724,051	1,138
TAHSSILAT	143	-6.54%	325,734	46,742	114
ALDEERA	552	-5.48%	16,177,415	9,187,516	1,358

Top Volume

Stock	Last Close	Change %	Volume	Value	Trades
NRE	100	6.38%	357,815,977	34,732,961	7,487
GFH	183	-3.68%	124,467,128	23,175,339	4,400
CLEANING	267	1.14%	107,223,598	29,122,938	6,105
ALIMTIAZ	66.4	4.57%	75,589,647	4,822,053	2,509
FUTUREKID	106	-5.36%	75,340,426	8,534,295	2,754

Top Value

Stock	Last Close	Change %	Volume	Value	Trades
NRE	100	6.38%	357,815,977	34,732,961	7,487
NBK	841	0.12%	40,539,274	33,724,107	4,954
KFH	774	-1.28%	41,486,144	32,234,639	9,107
CLEANING	267	1.14%	107,223,598	29,122,938	6,105
GFH	183	-3.68%	124,467,128	23,175,339	4,400