

# KUWAIT BOURSA WEEKLY REPORT

From 10 May  
To 14 May, 2026

(965) 18 777 77

Al-Safat Tower, Hawalli, Beirut St.

alsafatinvest.com

research@alsafatinvest.com

alsafatinvestment

al-safat-investment-company

الصفاة  
AL SAFAT

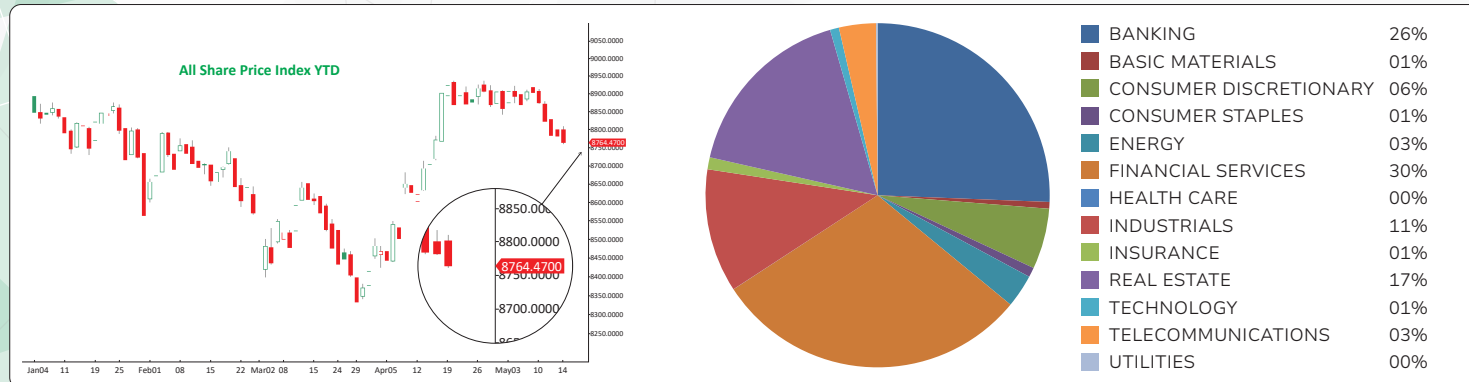
شركة الصفاة للاستثمار  
AL SAFAT INVESTMENT COMPANY

Market	M. Cap (KD ml)	Last Close	WTD %	MTD %	YTD %	Quantity Traded	Value Traded	No. of Trades	P/E	P/B	% of Total M. Cap
Premier Market	44,554	9,278.67	-1.6%	-1.1%	-2.3%	825,325,461	291,494,742	59,720	18.8	1.7	83.1%
Main Market	9,039	8,485.33	-1.5%	-1.0%	2.2%	1,424,142,856	216,730,293	71,624	13.7	1.2	16.9%
All Share	53,593	8,764.47	-1.6%	-1.1%	-1.6%	2,249,468,317	508,225,035	131,344	15.9	1.3	100%

Market	M. Cap (KD ml)	Last Close	WTD %	MTD %	YTD %	Quantity Traded	Value Traded	No. of Trades	P/E	P/B	% of Total M. Cap
Banking	32,178	2,115.72	-1.5%	-1.5%	-2.5%	281,238,374	130,210,214	25,785	23.2	1.4	60.04%
Basic Materials	466	825.37	0.1%	1.9%	-1.0%	5,089,800	3,204,099	655	13.9	1.7	0.87%
Consumer Discretionary	1,679	2,287.83	-2.6%	-2.7%	-4.0%	77,280,677	28,940,026	8,007	15.8	1.5	3.13%
Consumer Staples	401	1,319.78	-2.2%	-4.3%	-2.9%	5,676,408	4,593,551	617	20.6	2.0	0.75%
Energy	522	1,858.22	0.2%	2.8%	7.1%	71,701,823	15,797,854	4,511	18.6	2.1	0.97%
Financial Services	5,947	1,783.74	-2.6%	-0.9%	-7.1%	915,309,569	151,650,193	40,798	15.7	1.3	11.10%
Health Care	271	564.82	-0.3%	1.5%	-4.4%	96,063	59,799.790	104	25.2	1.9	0.51%
Industrials	2,538	749.85	-0.8%	-0.1%	-1.0%	205,562,756	59,006,358	15,595	17.4	1.3	4.74%
Insurance	776	1,845.77	-5.8%	-4.2%	-5.2%	34,017,337	5,731,502	3,340	11.2	1.0	1.45%
Real Estate	4,325	2,008.50	-1.4%	-1.0%	-1.0%	610,814,843	86,392,003	24,878	18.2	1.1	8.07%
Technology	36	2,640.82	13.4%	31.5%	177.1%	12,494,619	4,261,516.16	1,671	NM	3.3	0.07%
Telecommunications	4,294	1,402.37	-0.8%	1.5%	14.4%	25,568,613	17,694,963	4,959	11.2	2.6	8.01%
Utilities	162	386.84	-2.0%	-0.7%	-1.3%	4,617,435	682,956	424	10.0	1.1	0.30%

## The Market Summary

- Premier and Main Market trading volume and value declined by 24% and 12%, and 26% and 24%, respectively.
- Both indices are under heavy selling pressure and continue to move downward.
- Technically, the All Share Index closed at 8764, with support levels at 8740, 8711, and 8677, while resistance stands at 8790. The Premier Market Index closed at 9278, with support levels at 9258, 9216, and 9172, while resistance stands at 9293. The Main Market Index closed at 8485, with support levels at 8473, 8430, and 8394, while resistance stands at 8499.



## Top Gainers

Stock	Last Close	Change %	Volume	Value	Trades
GIH	562	%24.89	5,944,215	3,118,039	1,310
ASC	363	%13.44	12,494,619	4,261,516	1,671
ALSAFAT	266	%10.37	57,323,363	14,857,264	2,571
CLEANING	264	%10.00	102,476,128	25,813,623	5,075
ALDEERA	584	%9.98	10,906,127	6,241,736	1,495

## Top Losers

Stock	Last Close	Change %	Volume	Value	Trades
TAMINV	1,080	-19.40%	1,920	2,321	29
TIJARA	122	-18.12%	97,648,282	14,426,531	2,992
EQUIPMENT	221	-15.00%	20,708,146	5,041,380	2,931
KINS	492	-14.91%	1,293,011	730,980	265
NIH	152	-14.12%	46,735,467	7,629,106	2,161

## Top Volume

Stock	Last Close	Change %	Volume	Value	Trades
NRE	94.1	-4.95%	270,234,207	27,116,208	6,519
GFH	190	-4.52%	146,169,935	28,093,716	6,161
KPROJ	82.9	-7.48%	113,845,324	9,685,096	1,993
CLEANING	264	10.00%	102,476,128	25,813,623	5,075
TIJARA	122	-18.12%	97,648,282	14,426,531	2,992

## Top Value

Stock	Last Close	Change %	Volume	Value	Trades
KFH	784	-0.63%	59,877,593	46,785,137	11,419
NBK	840	-2.55%	36,633,008	31,188,772	4,910
GFH	190	-4.52%	146,169,935	28,093,716	6,161
NRE	94.1	-4.95%	270,234,207	27,116,208	6,519
CLEANING	264	10.00%	102,476,128	25,813,623	5,075