

KUWAIT BOURSA WEEKLY REPORT

FOR THE WEEK
JAN.25 - JAN.29
2026

(965) 22 675 140
Al-Safat Tower, Hawalli, Beirut St.
alsafatinvest.com
research@alsafatinvest.com
alsafatinvestment
al-safat-investment-company

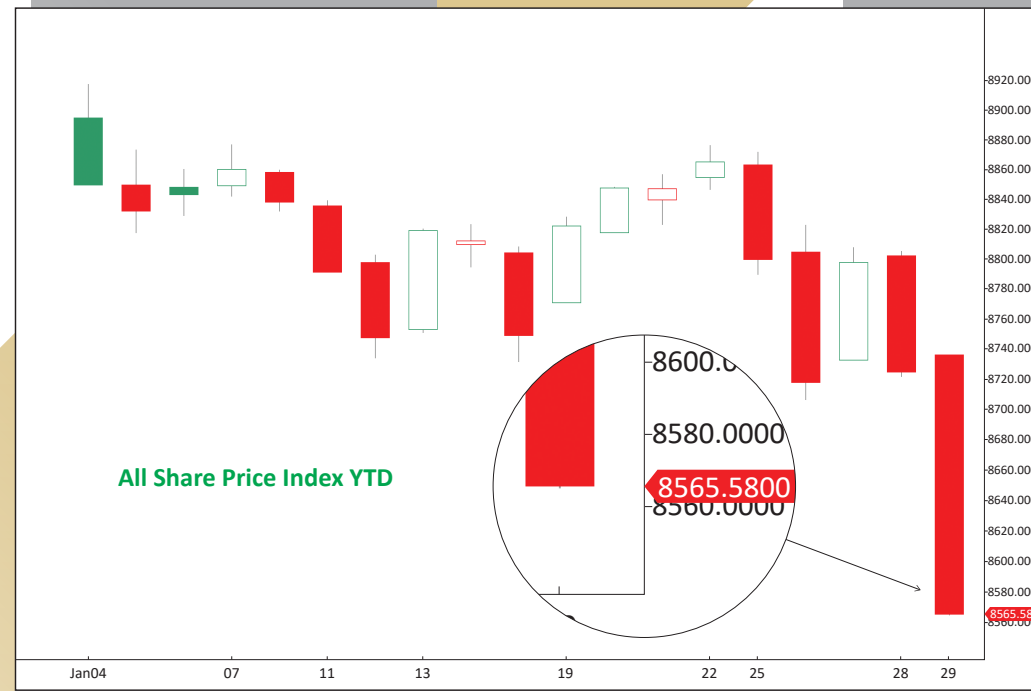
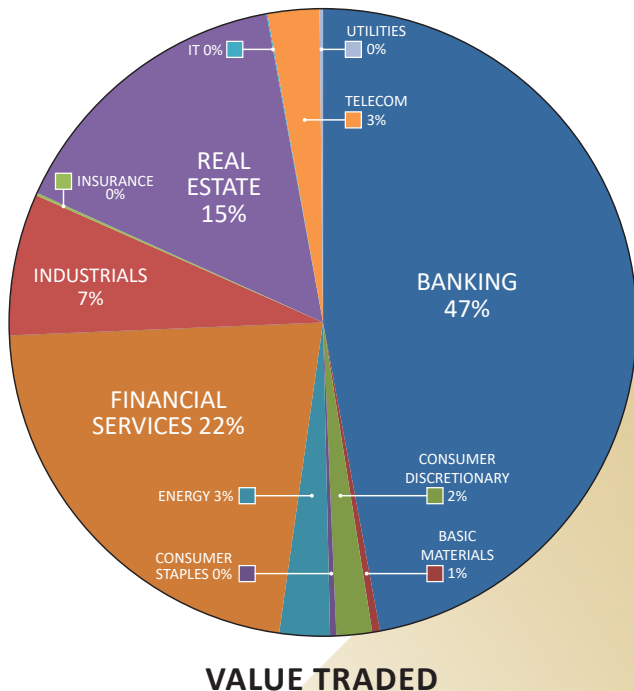
الصفاة
AL SAFAT
شركة الصفاة للاستثمار
AL SAFAT INVESTMENT COMPANY

Market	M. Cap (KD ml)	Last Close	WTD %	MTD %	YTD %	Quantity Traded	Value Traded	No. of Trades	P/E	P/B	% of Total M. Cap
Premier Market	42,861	9,123.94	-3.4%	-3.9%	-3.9%	729,940,392	316,206,463	56,412	17.9	1.7	81.8%
Main Market	9,538	8,023.11	-3.1%	-3.4%	-3.4%	475,297,627	82,299,143	42,807	13.0	1.2	18.2%
All Share	52,400	8,565.58	-3.4%	-3.8%	-3.8%	1,205,238,019	398,505,606	99,219	14.9	1.3	100%

Sector	M. Cap (KD ml)	Last Close	WTD %	MTD %	YTD %	Quantity Traded	Value Traded	No. of Trades	P/E	P/B	% of Total M. Cap
Banking	32,109	2,105.00	-3.2%	-3.0%	-3.0%	357,523,975	187,658,091	26,898	20.4	1.3	61.28%
Basic Materials	460	811.74	-1.9%	-2.6%	-2.6%	2,753,530	1,588,589	606	16.2	2.4	0.88%
Consumer Discretionary	1,499	2,222.17	-3.8%	-6.8%	-6.8%	13,564,502	7,316,411	3,560	15.8	1.4	2.86%
Consumer Staples	339	1,111.62	-16.2%	-18.2%	-18.2%	1,673,300	1,259,443	592	18.8	1.7	0.65%
Energy	510	1,806.95	-6.0%	4.2%	4.2%	41,052,829	10,340,135	3,519	11.9	2.4	0.97%
Financial Services	5,799	1,735.54	-4.8%	-9.6%	-9.6%	453,514,648	88,096,588	24,551	14.6	1.2	11.07%
Health Care	284	589.81	0.1%	-0.2%	-0.2%	36	23.336	9	24.3	1.8	0.54%
Industrials	2,478	730.36	-1.4%	-3.6%	-3.6%	96,333,215	29,070,227	14,569	15.4	1.3	4.73%
Insurance	777	1,841.25	-3.6%	-5.5%	-5.5%	4,233,418	530,003	797	10.2	1.2	1.48%
Real Estate	4,153	1,920.14	-4.8%	-5.4%	-5.4%	209,724,835	61,130,813	18,826	16.5	1.2	7.92%
Technology	11	814.80	-11.1%	-14.5%	-14.5%	1,959,670	227,917.99	351	NM	1.0	0.02%
Telecommunications	3,822	1,246.04	-1.3%	1.7%	1.7%	17,972,092	10,571,033	4,389	11.2	2.3	7.29%
Utilities	159	378.95	-1.4%	-3.4%	-3.4%	4,931,969	716,333	552	11.6	1.2	0.30%

Top Gainers						Top Losers					
Stock	last Close	Change %	Volume	Value	Trades	Stock	last Close	Change %	Volume	Value	Trades
EQUIPMENT	245	12.61%	24,490,227	6,958,931	6,288	EMIRATES	101	-21.71%	2,881,986	321,597	463
DIGITUS	987	4.98%	401,082	390,843	168	MEZZAN	1,017	-17.05%	1,098,024	1,203,911	508
THURAYA	177	3.51%	70,870	12,489	89	IPG	620	-16.22%	98,282	64,572	80
KHOT	260	3.17%	186,974	47,736	110	SOKOUK	65	-12.84%	4,632,778	312,725	358
INTEGRATED	427	2.89%	13,176,835	5,474,265	902	MARAKEZ	246.0	-12.77%	8,939,294	2,333,058	2,874

Top Volume						Top Value					
Stock	Last	Change %	Volume	Value	Trades	Stock	Last	Change %	Volume	Value	Trades
KFH	808	-2.18%	82,023,985	66,931,095	9,750	KFH	808	-2.18%	82,023,985	66,931,095	9,750
GFH	175	-5.41%	66,251,380	11,749,849	1,772	NBK	951	-5.09%	52,516,456	51,788,534	5,979
KIB	272	-2.16%	62,447,667	17,239,935	1,507	MABANEE	1,005	-5.28%	22,876,613	23,392,777	3,776
NIND	264.0	-7.69%	53,696,314	14,615,557	1,800	KIB	272	-2.16%	62,447,667	17,239,935	1,507
NBK	951.0	-5.09%	52,516,456	51,788,534	5,979	GBK	345	-1.71%	43,252,917	15,078,202	1,438



Market Summary:

- Premier volume dropped 0.2%, while value rose 11%. Main market volume and value dropped 33% and 34%, respectively.
- Despite a good start to the week, both indexes fell heavily on Thursday due to escalated regional tensions.
- Technically, the All Share Index closed at 8,565, with support levels at 8,546, 8,516, and 8,463, while resistance stands at 8,617. The Premier Index closed at 9,123, with support levels at 9,080, 9,011, and 8,908, while resistance stands at 9,132. The Main Index closed at 8,023, with support levels at 8,012, 7,973, and 7,933, while resistance stands at 8,056.