

KUWAIT BOURSA WEEKLY REPORT

FOR THE WEEK
FEB.01 - FEB.05
2026

(965) 22 675 140
Al-Safat Tower, Hawalli, Beirut St.
alsafatinvest.com
research@alsafatinvest.com
alsafatinvestment
al-safat-investment-company

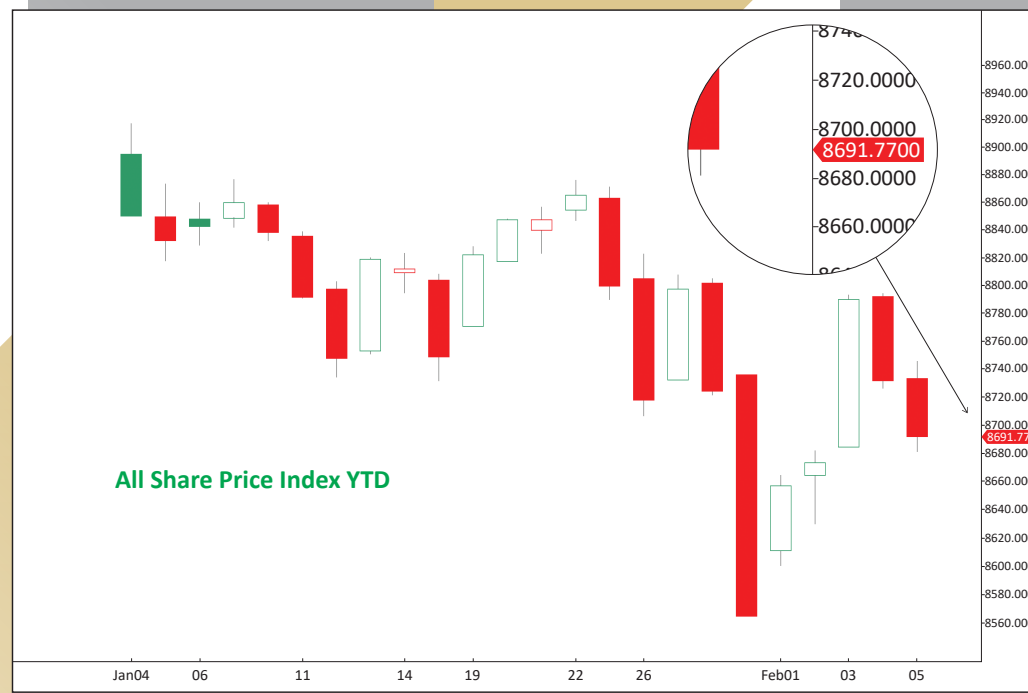
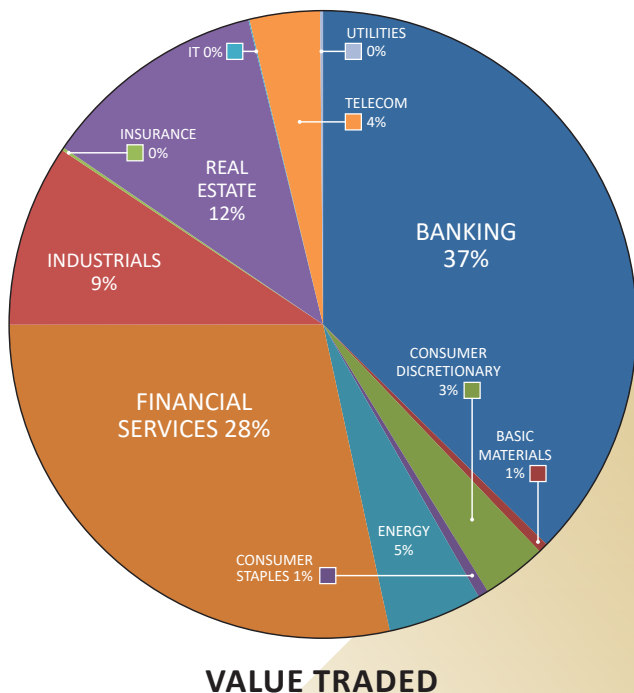
الصفاة
AL SAFAT
شركة الصفاة للاستثمار
AL SAFAT INVESTMENT COMPANY

Market	M. Cap (KD ml)	Last Close	WTD %	MTD %	YTD %	Quantity Traded	Value Traded	No. of Trades	P/E	P/B	% of Total M. Cap
Premier Market	43,393	9,266.07	1.6%	1.6%	-2.4%	635,359,216	250,396,309	45,403	18.2	1.7	81.9%
Main Market	9,616	8,109.70	1.1%	1.1%	-2.3%	498,468,607	90,024,900	38,111	13.6	1.2	18.1%
All Share	53,009	8,691.77	1.5%	1.5%	-2.4%	1,133,827,823	340,421,209	83,514	15.2	1.3	100%

Sector	M. Cap (KD ml)	Last Close	WTD %	MTD %	YTD %	Quantity Traded	Value Traded	No. of Trades	P/E	P/B	% of Total M. Cap
Banking	32,374	2,128.53	1.1%	1.1%	-1.9%	264,437,256	127,230,521	20,750	20.9	1.3	61.07%
Basic Materials	448	793.20	-2.3%	-2.3%	-4.9%	2,973,476	1,701,486	517	14.8	2.3	0.84%
Consumer Discretionary	1,518	2,256.71	1.6%	1.6%	-5.3%	15,511,338	11,327,018	3,349	16.0	1.4	2.86%
Consumer Staples	386	1,272.94	14.5%	14.5%	-6.4%	1,839,541	1,824,463	628	21.7	1.9	0.73%
Energy	524	1,864.36	3.2%	3.2%	7.5%	57,154,575	16,514,928	3,541	11.5	2.4	0.99%
Financial Services	5,898	1,773.65	2.2%	2.2%	-7.6%	498,478,904	96,669,435	23,398	14.7	1.2	11.13%
Health Care	281	586.09	-0.6%	-0.6%	-0.8%	1,122	694.820	12	24.3	1.8	0.53%
Industrials	2,478	732.73	0.3%	0.3%	-3.3%	95,831,582	31,944,672	11,395	15.5	1.3	4.68%
Insurance	797	1,895.64	3.0%	3.0%	-2.7%	4,899,700	509,141	830	10.5	1.2	1.50%
Real Estate	4,240	1,967.10	2.4%	2.4%	-3.1%	167,161,577	39,668,348	14,065	17.1	1.1	8.00%
Technology	11	829.35	1.8%	1.8%	-13.0%	1,670,008	192,814.13	342	NM	1.0	0.02%
Telecommunications	3,891	1,270.30	1.9%	1.9%	3.6%	20,251,871	12,313,660	4,195	10.7	2.4	7.34%
Utilities	162	386.84	2.1%	2.1%	-1.3%	3,616,873	524,029	492	11.8	1.2	0.31%

Top Gainers						Top Losers					
Stock	last Close	Change %	Volume	Value	Trades	Stock	last Close	Change %	Volume	Value	Trades
DIGITUS	1,235	25.13%	243,038	295,793	288	KHOT	231	-11.15%	766,088	179,725	243
MEZZAN	1,175	15.54%	1,569,257	1,798,709	566	EQUIPMENT	221	-9.80%	19,787,453	4,673,076	4,072
INOVEST	102	12.46%	33,575,905	3,374,801	1,558	ALDEERA	422	-8.86%	15,484,413	7,034,092	1,720
EMIRATES	113	11.88%	2,798,296	317,381	384	ALKOUT	1,048	-8.55%	551	600	14
ALFTAQA	304	10.14%	51,163,519	15,308,683	2,799	CGC	915.0	-7.58%	3,459,743	3,293,564	590

Top Volume						Top Value					
Stock	Last	Change %	Volume	Value	Trades	Stock	Last	Change %	Volume	Value	Trades
ALOLA	125	8.70%	107,526,176	13,435,878	2,249	NBK	967	1.68%	35,738,059	34,742,947	4,907
AAYAN	229	9.57%	60,720,355	13,776,615	1,560	KFH	814	0.74%	42,186,734	34,405,482	6,240
GFH	179	2.29%	53,980,356	9,696,402	1,648	ALFTAQA	304	10.14%	51,163,519	15,308,683	2,799
KIB	276.0	1.47%	53,367,709	14,690,378	1,278	KIB	276	1.47%	53,367,709	14,690,378	1,278
ALFTAQA	304.0	10.14%	51,163,519	15,308,683	2,799	AAYAN	229	9.57%	60,720,355	13,776,615	1,560



Market Summary:

- Premier volume and value dropped by 13% and 12%, respectively, while Main volume and value rose by 5% and 9%, respectively.
- With regional tensions de-escalated, both indices showed stability.
- Technically, the All Share Index closed at 8691, with support levels at 8677, 8617, and 8546, and resistance at 8694. The Premier Index closed at 9266, with support levels at 9258, 9216, and 9172, and resistance at 9293. The Main Index closed at 8109, with support levels at 8102, 8086, and 8056, and resistance at 8133.