

KUWAIT BOURSA WEEKLY REPORT

FOR THE WEEK
JAN.19 - JAN.22
2026

(965) 22 675 140
Al-Safat Tower, Hawalli, Beirut St.
alsafatinvest.com
research@alsafatinvest.com
alsafatinvestment
al-safat-investment-company

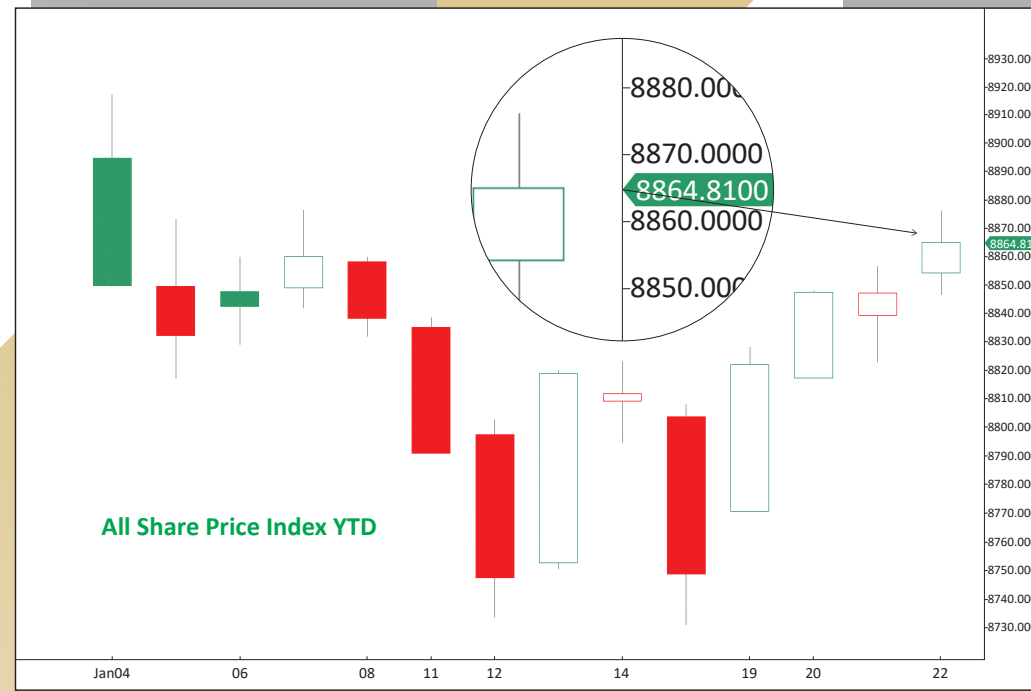
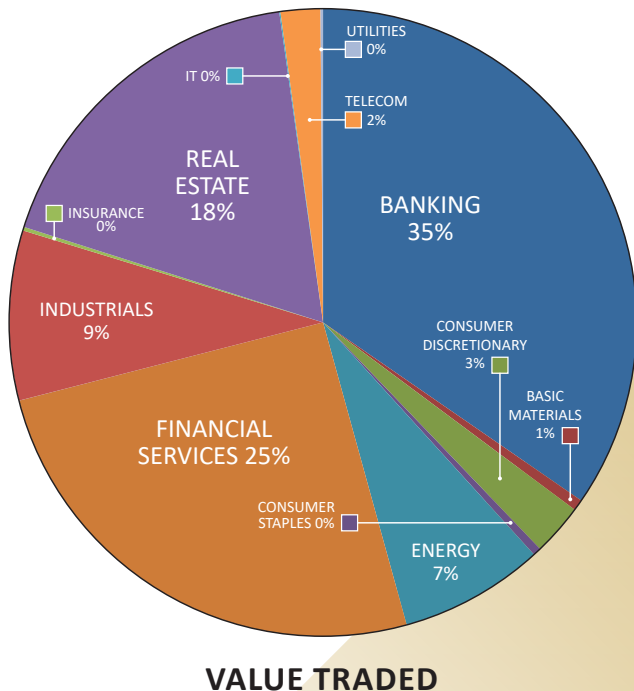
الصفاة
AL SAFAT
شركة الصفاة للاستثمار
AL SAFAT INVESTMENT COMPANY

Market	M. Cap (KD ml)	Last Close	WTD %	MTD %	YTD %	Quantity Traded	Value Traded	No. of Trades	P/E	P/B	% of Total M. Cap
Premier Market	44,242	9,449.36	1.0%	-0.5%	-0.5%	585,331,113	228,189,038	37,252	18.3	1.7	81.9%
Main Market	9,783	8,276.03	2.7%	-0.3%	-0.3%	570,486,460	99,446,157	39,522	14.3	1.2	18.1%
All Share	54,024	8,864.81	1.3%	-0.5%	-0.5%	1,155,817,573	327,635,196	76,774	15.3	1.3	100%

Sector	M. Cap (KD ml)	Last Close	WTD %	MTD %	YTD %	Quantity Traded	Value Traded	No. of Trades	P/E	P/B	% of Total M. Cap
Banking	33,058	2,173.96	0.7%	0.2%	0.2%	230,643,110	113,406,799	14,030	21.1	1.4	61.19%
Basic Materials	467	827.21	2.0%	-0.8%	-0.8%	3,237,375	1,866,032	360	16.1	2.4	0.86%
Consumer Discretionary	1,554	2,309.74	1.9%	-3.1%	-3.1%	13,339,087	8,707,028	3,049	16.3	1.5	2.88%
Consumer Staples	403	1,326.17	6.0%	-2.5%	-2.5%	1,997,988	1,377,599	913	22.6	2.0	0.75%
Energy	540	1,921.47	6.9%	10.8%	10.8%	88,824,422	24,395,761	5,145	13.2	2.5	1.00%
Financial Services	6,041	1,822.48	2.5%	-5.1%	-5.1%	464,618,203	82,834,740	22,655	15.2	1.2	11.18%
Health Care	283	589.06	0.5%	-0.3%	-0.3%	18,775	11,454.924	31	24.3	1.8	0.52%
Industrials	2,500	740.65	1.9%	-2.2%	-2.2%	79,641,447	28,627,776	8,889	15.3	1.3	4.63%
Insurance	797	1,909.10	-0.7%	-2.0%	-2.0%	4,639,521	610,085	713	10.8	1.2	1.47%
Real Estate	4,349	2,017.38	2.1%	-0.6%	-0.6%	253,611,512	58,480,518	17,557	17.3	1.2	8.05%
Technology	13	916.65	5.9%	-3.8%	-3.8%	1,583,558	198,298.94	268	NM	1.1	0.02%
Telecommunications	3,860	1,262.21	2.1%	3.0%	3.0%	10,681,607	6,686,838	2,753	11.1	2.4	7.15%
Utilities	161	384.21	2.1%	-2.0%	-2.0%	2,980,968	432,266	411	11.7	1.2	0.30%

Top Gainers						Top Losers					
Stock	last Close	Change %	Volume	Value	Trades	Stock	last Close	Change %	Volume	Value	Trades
UNICAP	338	22.46%	3,485,242	1,088,942	593	CGC	981	-8.91%	1,235,069	1,268,121	230
OSOS	223	19.89%	13,136,594	2,890,976	1,385	MRC	129	-7.19%	226,894	29,279	82
OSOUL	263	19.00%	10,889,482	2,777,763	698	PAPER	223	-5.11%	128,228	28,819	54
EKTTITAB	37	18.77%	87,890,133	3,185,162	2,933	BOURSA	3,150	-4.11%	1,521,692	4,868,337	786
ACICO	460	17.65%	27,629,325	12,365,823	3,349	KMEFIC	170.0	-3.95%	12,260,945	2,111,048	706

Top Volume						Top Value					
Stock	Last	Change %	Volume	Value	Trades	Stock	Last	Change %	Volume	Value	Trades
EKTTITAB	37	18.77%	87,890,133	3,185,162	2,933	KFH	826	1.35%	44,596,026	36,693,265	4,837
ALFTAQA	286	12.16%	82,591,929	#N/A	4,456	NBK	1,002	0.40%	26,837,490	26,861,983	2,767
GFH	185	5.11%	66,140,619	12,060,367	1,627	ALFTAQA	286	12.16%	82,591,929	23,516,993	4,456
GBK	351.0	-0.57%	48,022,020	16,814,875	1,391	GBK	351	-0.57%	48,022,020	16,814,875	1,391
KFH	826.0	1.35%	44,596,026	36,693,265	4,837	ARZAN	347	1.46%	36,609,894	12,801,931	1,134



Market Summary:

- Premier volume dropped by 5%, while value rose by 5%. Main market volume and value increased by 24% and 28%, respectively.
- Both indexes recorded a slight increase despite escalating geopolitical tensions.
- Technically, the All Share Index closed at 8,864, with support levels at 8,827, 8,790, and 8,740, and resistance at 8,884. The Premier Index closed at 9,449, with support levels at 9,437, 9,422, and 9,400, and resistance at 9,462. The Main Index closed at 8,276, with support levels at 8,248, 8,186, and 8,156, and resistance at 8,308.