

KUWAIT BOURSA WEEKLY REPORT

FOR THE WEEK
JAN.11 - JAN.15
2026

(965) 22 675 140
Al-Safat Tower, Hawalli, Beirut St.
alsafatinvest.com
research@alsafatinvest.com
alsafatinvestment
al-safat-investment-company

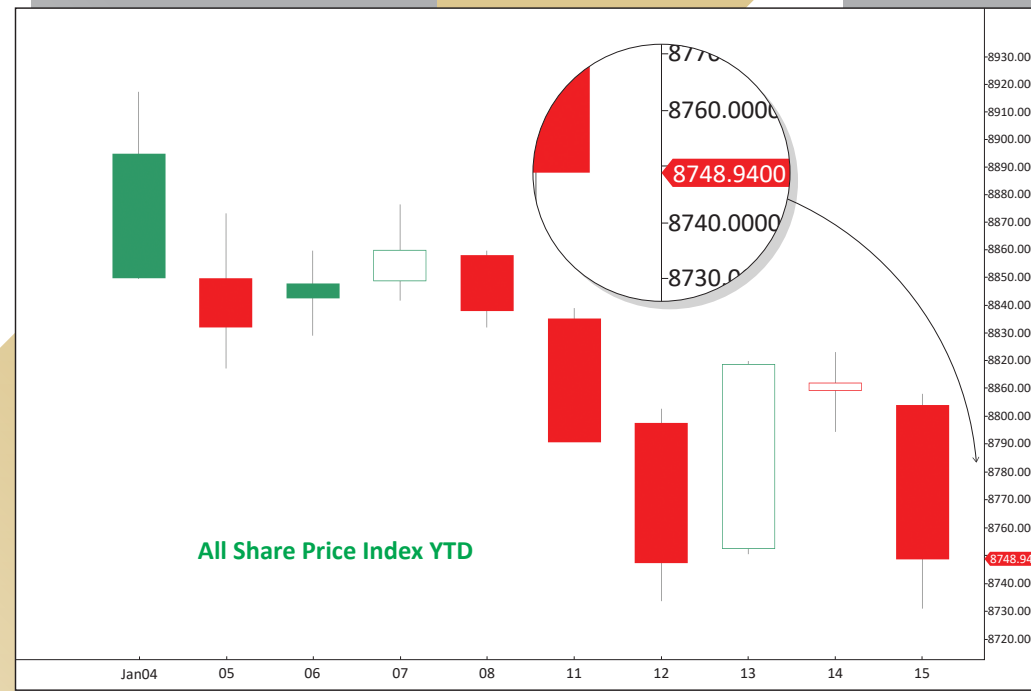
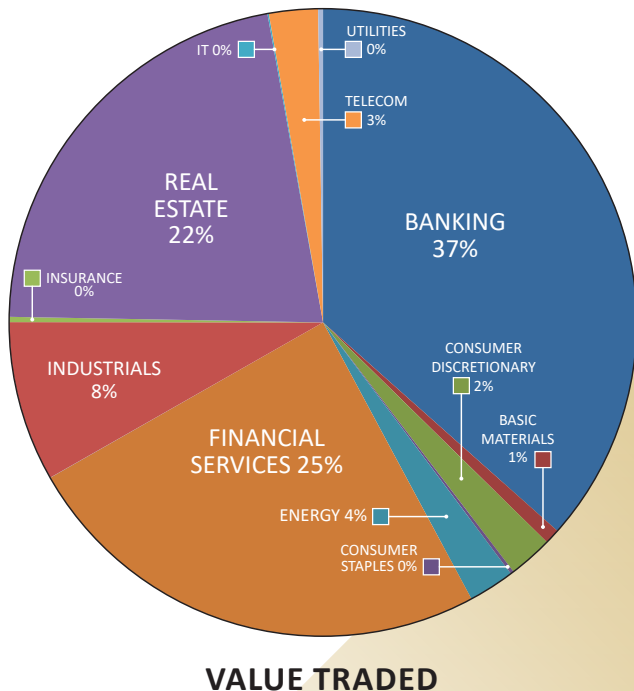
الصفاة
AL SAFAT
شركة الصفاة للاستثمار
AL SAFAT INVESTMENT COMPANY

Market	M. Cap (KD ml)	Last Close	WTD %	MTD %	YTD %	Quantity Traded	Value Traded	No. of Trades	P/E	P/B	% of Total M. Cap
Premier Market	43,778	9,352.09	-1.0%	-1.5%	-1.5%	774,009,161	271,673,500	46,917	17.7	1.7	82.1%
Main Market	9,526	8,060.18	-1.2%	-2.9%	-2.9%	575,501,335	96,786,559	44,049	13.6	1.2	17.9%
All Share	53,304	8,748.94	-1.0%	-1.8%	-1.8%	1,349,510,496	368,460,059	90,966	15.3	1.3	100%

Sector	M. Cap (KD ml)	Last Close	WTD %	MTD %	YTD %	Quantity Traded	Value Traded	No. of Trades	P/E	P/B	% of Total M. Cap
Banking	32,795	2,157.96	-0.1%	-0.6%	-0.6%	287,997,083	134,756,939	17,138	21.2	1.4	61.53%
Basic Materials	458	811.34	-0.9%	-2.7%	-2.7%	4,930,236	2,868,986	633	15.5	2.4	0.86%
Consumer Discretionary	1,524	2,266.61	-3.0%	-4.9%	-4.9%	12,339,173	8,334,810	3,146	15.8	1.4	2.86%
Consumer Staples	380	1,251.04	-7.6%	-8.0%	-8.0%	956,537	634,977	801	21.2	1.9	0.71%
Energy	506	1,796.77	0.3%	3.6%	3.6%	38,438,817	8,748,198	2,989	12.2	2.5	0.95%
Financial Services	5,904	1,777.31	-4.3%	-7.5%	-7.5%	550,614,019	90,644,230	27,916	15.0	1.2	11.08%
Health Care	281	586.09	1.2%	-0.8%	-0.8%	49,032	30,613.650	73	24.3	1.8	0.53%
Industrials	2,451	726.67	-3.0%	-4.1%	-4.1%	99,277,890	30,380,490	10,359	15.4	1.3	4.60%
Insurance	801	1,921.66	0.4%	-1.3%	-1.3%	6,741,593	992,654	1,033	10.7	1.2	1.50%
Real Estate	4,255	1,974.94	-2.2%	-2.7%	-2.7%	323,898,261	80,605,024	22,188	17.0	1.1	7.98%
Technology	12	865.72	-4.8%	-9.2%	-9.2%	2,145,200	261,812.62	282	NM	1.0	0.02%
Telecommunications	3,779	1,236.26	-0.4%	0.9%	0.9%	15,740,004	9,274,806	3,646	10.5	2.4	7.09%
Utilities	157	376.32	-2.7%	-4.0%	-4.0%	6,382,651	926,518	762	11.5	1.2	0.30%

Top Gainers						Top Losers					
Stock	last Close	Change %	Volume	Value	Trades	Stock	last Close	Change %	Volume	Value	Trades
MRC	139	9.45%	384,828	51,882	102	UPAC	177	-15.71%	108,428	20,029	80
IPG	639	8.12%	159,712	99,322	78	MARAKEZ	276	-12.38%	11,061,318	3,266,125	3,653
PAPER	235	6.82%	103,358	23,298	78	TIJARA	85	-11.33%	2,589,102	229,577	319
BAYANINV	82	6.62%	55,096,575	4,874,183	2,673	CLEANING	105	-11.02%	25,507,082	2,779,996	1,513
FTI	200	5.82%	1,243,972	254,908	360	EQUIPMENT	475.0	-9.70%	2,540,826	1,257,612	975

Top Volume						Top Value					
Stock	Last	Change %	Volume	Value	Trades	Stock	Last	Change %	Volume	Value	Trades
GFH	176	-4.35%	118,696,709	21,088,420	2,589	KFH	815	0.62%	46,973,463	38,076,022	5,193
ALTIJARIA	216	-3.57%	103,053,943	22,640,128	1,613	GBK	353	-1.12%	83,362,208	29,284,147	1,987
GBK	353	-1.12%	83,362,208	29,284,147	1,987	NBK	998	-0.89%	26,195,886	26,241,960	3,105
BAYANINV	82.1	6.62%	55,096,575	4,874,183	2,673	ALTIJARIA	216	-3.57%	103,053,943	22,640,128	1,613
WARBABANK	295.0	1.72%	51,948,443	15,297,983	2,197	GFH	176	-4.35%	118,696,709	21,088,420	2,589



Market Summary:

- Premier volume dropped 2%, while its value rose 3%. Main volume rose 5%, while its value dropped 12%.
- The instability continues due to high levels of uncertainty and unpredictable market conditions.
- Technically, the All Share index closed at 8748, with support levels at 8740, 8711, and 8694, and resistance at 8790. The Premier index closed at 9352, with support levels at 9347, 9317, and 9293, and resistance at 9376. The Main index closed at 8060, with support levels at 8056, 8012, and 7973, and resistance at 8086.