

KUWAIT BOURSA WEEKLY REPORT

WEEK ENDED ON 21 AUGUST 2025

Market	M. Cap (KD ml)	Last Close	WTD %	MTD %	YTD %	Quantity Traded	Value Traded	No. of Trades	P/E	P/B	% of Total M. Cap
Premier Market	43,269	9,282.40	-0.9%	-0.1%	18.4%	642,148,141	229,606,742	43,601	18.0	1.7	81.9%
Main Market	9,539	7,910.75	2.0%	3.9%	14.5%	2,128,381,152	235,750,316	88,973	16.0	1.3	18.1%
All Share	52,808	8,665.84	-0.4%	0.6%	17.7%	2,770,529,293	465,357,058	132,574	16.6	1.4	100%

Sector	M. Cap (KD ml)	Last Close	WTD %	MTD %	YTD %	Quantity Traded	Value Traded	No. of Trades	P/E	P/B	% of Total M. Cap
Banking	33,045	2,174.59	-1.1%	-0.6%	20.2%	265,244,529	105,931,986	19,554	23.1	1.5	62.58%
Basic Materials	524	927.89	3.4%	3.3%	1.8%	7,987,684	5,164,694	1,042	18.0	2.6	0.99%
Consumer Discretionary	1,478	2,200.88	-0.1%	-1.4%	3.7%	37,397,787	21,211,948	6,984	18.0	1.9	2.80%
Consumer Staples	450	1,481.68	10.0%	9.1%	48.4%	8,820,256	5,678,133	1,273	26.4	2.3	0.85%
Energy	332	1,633.84	1.5%	2.9%	37.4%	57,287,652	6,351,104	3,616	11.7	2.0	0.63%
Financial Services	5,836	1,700.67	0.9%	4.2%	12.6%	1,632,897,651	180,812,172	53,858	14.9	1.3	11.05%
Health Care	252	526.31	5.4%	2.9%	14.8%	514,696	253,819.180	273	18.1	1.6	0.48%
Industrials	2,374	703.50	0.4%	1.1%	-2.8%	236,440,209	46,542,611	13,674	16.5	1.2	4.50%
Insurance	827	2,001.75	1.1%	3.7%	-2.6%	23,761,098	3,447,663	1,996	9.1	1.2	1.57%
Real Estate	3,973	1,863.93	0.9%	3.2%	37.8%	463,452,054	76,531,741	26,104	21.4	1.2	7.52%
Technology	20	1,433.17	-3.0%	-6.2%	37.8%	5,183,580	1,001,905.18	290	NM	1.7	0.04%
Telecommunications	3,507	1,147.67	0.0%	0.2%	12.8%	18,557,636	10,206,379	3,067	9.3	2.2	6.64%
Utilities	190	455.26	0.0%	10.9%	14.6%	12,984,461	2,222,902	843	14.9	1.4	0.36%

Top Gainers

Stock	last Close	Change %	Volume	Value	Trades
EKTTITAB	27	25.23%	321,506,672	8,334,054	5,992
ARABREC	202	18.13%	129,438,620	23,745,596	3,285
EMIRATES	190	15.85%	12,060,621	2,175,722	1,557
ALKOUT	1,369	15.04%	2,142	2,632	15
KHOT	245	13.43%	994,330	228,879	380

Top Losers

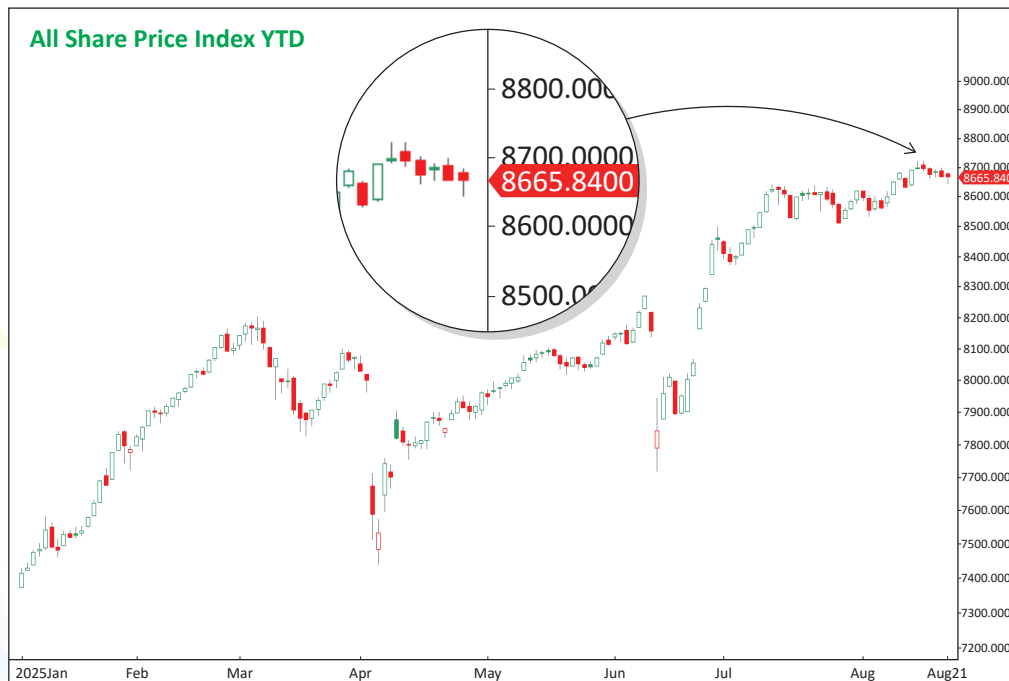
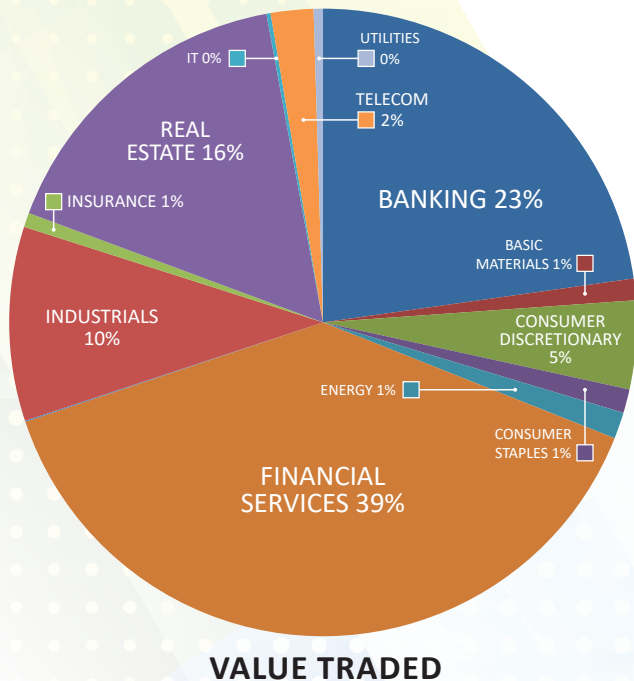
Stock	last Close	Change %	Volume	Value	Trades
INJAZZAT	164	-25.45%	7,436,007	1,326,821	1,002
AAYAN	190	-5.00%	24,594,179	4,737,982	734
WARBACAP	775	-3.73%	2,173,490	1,738,228	957
MARKAZ	151	-3.21%	12,783,621	1,917,883	541
ASC	197.0	-2.96%	5,183,580	1,001,905	290

Top Volume

Stock	Last	Change %	Volume	Value	Trades
EKTTITAB	27	25.23%	321,506,672	8,334,054	5,992
ALOLA	108	12.85%	277,078,524	29,681,099	6,995
ALIMTIAZ	56	11.62%	230,053,968	12,687,835	6,521
MANAZEL	58.3	13.20%	173,418,083	9,785,495	5,791
ARABREC	202.0	18.13%	129,438,620	23,745,596	3,285

Top Value

Stock	Last	Change %	Volume	Value	Trades
WARBABANK	297	2.06%	106,497,115	31,224,712	3,806
ALOLA	108	12.85%	277,078,524	29,681,099	6,995
KFH	794	-1.24%	35,878,301	28,628,084	7,689
ARABREC	202	18.13%	129,438,620	23,745,596	3,285
GBK	356	1.71%	55,087,077	19,426,670	2,407



Market Summary:

- Premier volume and value dropped by 17% and 13%, respectively, while the Main markets rose by 50% and 16%.
- The Premier index is struggling to overcome resistance, while the Main index is breaking records by reaching a new all-time high.
- Technically, the All Share index closed at 8665. Its support levels are at 8617, 8546, and 8463, with resistance at 8677. The Premier index closed at 9282, with support levels at 9258, 9216, and 9172, and resistance at 9293. The Main index closed at 7910. Its support levels are at 7894, 7848, and 7820, with resistance also at 7910.