

KUWAIT BOURSA WEEKLY REPORT

WEEK ENDED ON 17 APRIL 2025

Market	M. Cap (KD ml)	Last Close	WTD %	MTD %	YTD %	Quantity Traded	Value Traded	No. of Trades	P/E	P/B	% of Total M. Cap
Premier Market	39,269	8,419.61	0.5%	-2.9%	7.4%	687,337,392	267,389,291	50,298	17.2	1.6	81.7%
Main Market	8,822	7,220.00	1.3%	-0.7%	4.5%	560,658,884	85,280,065	34,923	12.9	1.0	18.3%
All Share	48,091	7,868.98	0.6%	-2.5%	6.9%	1,247,996,276	352,669,357	85,221	14.5	1.1	100%

Sector	M. Cap (KD ml)	Last Close	WTD %	MTD %	YTD %	Quantity Traded	Value Traded	No. of Trades	P/E	P/B	% of Total M. Cap
Banking	30,270	1,989.57	0.4%	-2.7%	9.9%	323,571,112	133,597,279	23,529	20.7	1.6	62.94%
Basic Materials	492	871.76	-1.2%	-3.0%	-4.3%	5,294,175	3,525,238	1,068	11.0	2.4	1.02%
Consumer Discretionary	1,571	2,294.16	2.5%	-2.8%	8.1%	38,877,930	27,128,066	7,510	23.9	1.6	3.27%
Consumer Staples	273	899.65	-0.6%	-8.9%	-9.9%	4,282,001	3,439,772	312	17.2	1.5	0.57%
Energy	258	1,271.83	-1.1%	-4.0%	7.0%	16,368,071	2,710,270	1,520	10.6	1.1	0.54%
Financial Services	5,139	1,470.29	2.6%	-2.5%	-2.7%	413,734,410	83,293,717	20,980	15.6	1.0	10.69%
Health Care	273	570.28	-0.1%	-0.1%	24.4%	18,384	14,242.780	19	86.7	1.7	0.57%
Industrials	2,477	731.38	0.8%	-1.8%	1.1%	121,378,909	38,865,204	11,141	14.1	1.1	5.15%
Insurance	802	1,954.17	-4.8%	-8.3%	-4.9%	3,220,570	252,166	386	8.7	1.1	1.67%
Real Estate	3,211	1,513.68	2.1%	-0.2%	11.9%	293,616,955	47,634,415	14,716	14.9	0.8	6.68%
Technology	16	1,149.45	9.0%	6.8%	10.5%	595,639	89,601.95	140	NM	1.3	0.03%
Telecommunications	3,145	1,029.14	-0.8%	-2.0%	1.1%	25,462,077	11,886,143	3,644	10.5	1.7	6.54%
Utilities	164	392.11	1.4%	-3.2%	-1.3%	1,576,043	233,241	256	17.8	1.2	0.34%

Top Gainers

Stock	last Close	Change %	Volume	Value	Trades
KMEFIC	155	35.96%	7,950,408	1,086,736	1,152
GIH	774	33.22%	11,832,187	8,644,578	1,392
DIGITUS	93	25.44%	2,565,779	236,955	339
DALQAN	322	17.09%	4,024,984	1,226,291	378
KBT	134	12.61%	79,402,016	10,472,199	2,962

Top Losers

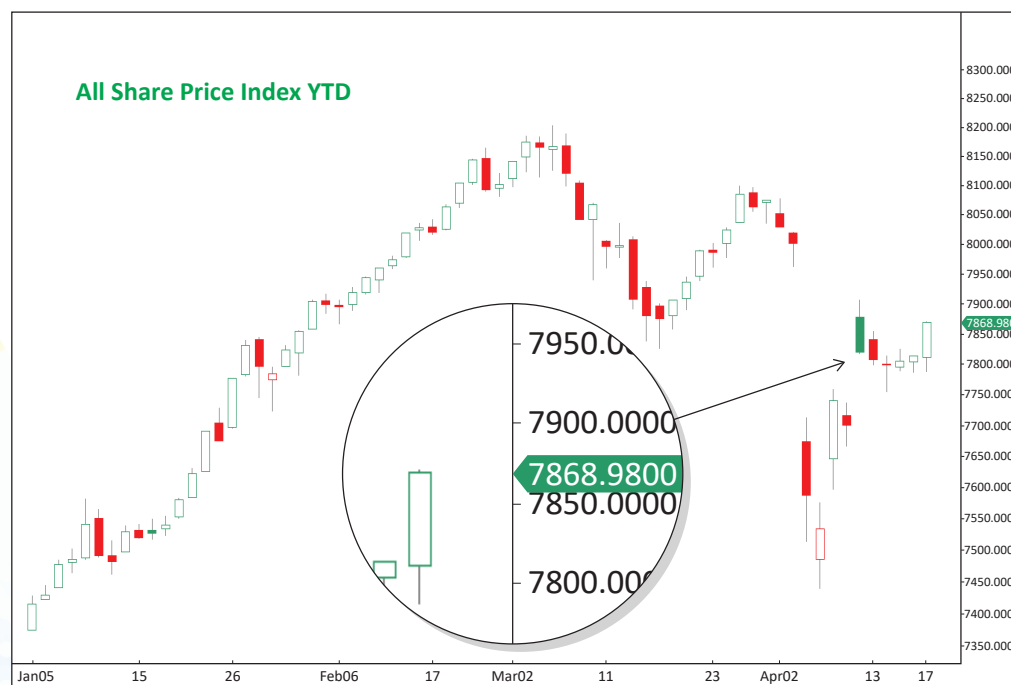
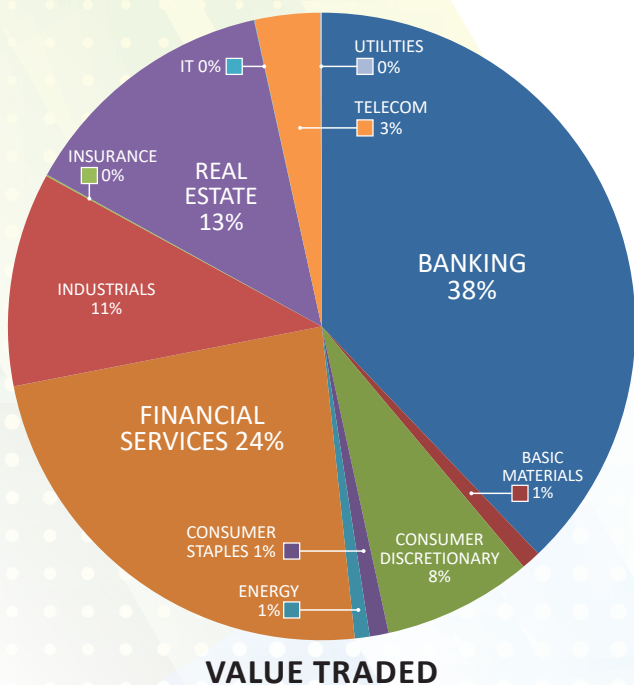
Stock	last Close	Change %	Volume	Value	Trades
KHOT	221	-21.07%	24,348	5,156	42
OOREDOO	1,040	-8.77%	914,249	1,000,727	472
BAYANINV	57	-7.48%	2,280,822	131,649	233
AINS	774	-6.92%	6,245	4,687	25
KINS	516.0	-6.18%	104,132	54,317	40

Top Volume

Stock	Last	Change %	Volume	Value	Trades
WARBABANK	221	4.25%	87,520,530	18,799,755	2,804
KBT	134	12.61%	79,402,016	10,472,199	2,962
KFH	714	-0.70%	72,193,413	51,406,828	10,826
ARZAN	269.0	-0.74%	71,754,447	19,413,365	1,615
KIB	215.0	5.00%	60,182,988	12,633,508	1,226

Top Value

Stock	Last	Change %	Volume	Value	Trades
KFH	714	-0.70%	72,193,413	51,406,828	10,826
NBK	955	0.63%	25,185,288	23,677,510	3,483
ARZAN	269	-0.74%	71,754,447	19,413,365	1,615
WARBABANK	221	4.25%	87,520,530	18,799,755	2,804
KRE	330	2.80%	41,189,930	13,497,941	3,354



Market Summary:

- Premier and Main Market volume and value increased slightly compared to previous days.
- Premier and Main indexes are showing positivity, holding their ground.
- Technically, the All Share Index closed at 7,868, with support levels at 7,850, 7,810, and 7,726, and resistance at 7,869. The Premier Index closed at 8,419, with support levels at 8,393, 8,365, and 8,335, and resistance at 8,427. The Main Index closed at 7,220, with support levels at 7,210, 7,176, and 7,123, and resistance at 7,255.