

KUWAIT BOURSA WEEKLY REPORT

WEEK ENDED ON 3 APRIL 2025

Market	M. Cap (KD ml)	Last Close	WTD %	MTD %	YTD %	Quantity Traded	Value Traded	No. of Trades	P/E	P/B	% of Total M. Cap
Premier Market	39,629	8,594.87	-0.9%	-0.9%	9.6%	202,807,154	89,133,324	17,588	17.7	1.6	81.8%
Main Market	8,798	7,205.89	-0.8%	-0.8%	4.3%	278,684,193	51,312,983	17,787	14.9	1.0	18.2%
All Share	48,427	8,000.73	-0.9%	-0.9%	8.7%	481,491,347	140,446,307	35,375	16.0	1.1	100%

Sector	M. Cap (KD ml)	Last Close	WTD %	MTD %	YTD %	Quantity Traded	Value Traded	No. of Trades	P/E	P/B	% of Total M. Cap
Banking	30,372	2,027.59	-0.8%	-0.8%	12.0%	91,227,778	46,995,585	8,033	20.3	1.6	62.72%
Basic Materials	514	911.00	1.3%	1.3%	0.0%	1,589,209	1,086,100	443	11.7	2.4	1.06%
Consumer Discretionary	1,606	2,346.96	-0.6%	-0.6%	10.6%	13,152,328	9,174,618	3,059	25.2	1.5	3.32%
Consumer Staples	278	913.72	-7.4%	-7.4%	-8.5%	1,672,578	1,309,310	262	43.5	1.5	0.57%
Energy	271	1,334.41	0.7%	0.7%	12.2%	3,280,519	453,095	285	11.0	1.2	0.56%
Financial Services	5,219	1,491.77	-1.1%	-1.1%	-1.2%	202,195,499	47,770,604	11,677	16.4	1.0	10.78%
Health Care	274	570.59	0.0%	0.0%	24.5%	0	0.000	0	86.8	1.7	0.56%
Industrials	2,469	728.91	-2.2%	-2.2%	0.7%	39,372,117	9,937,360	3,911	12.9	1.0	5.10%
Insurance	856	2,085.46	-2.2%	-2.2%	1.5%	828,774	94,172	188	9.2	1.1	1.77%
Real Estate	3,210	1,513.58	-0.2%	-0.2%	11.9%	117,125,710	19,123,624	5,962	16.6	0.9	6.63%
Technology	16	1,149.45	6.8%	6.8%	10.5%	973,927	147,260.13	114	NM	1.3	0.03%
Telecommunications	3,176	1,039.44	-1.0%	-1.0%	2.1%	8,371,133	4,097,845	1,302	11.4	1.4	6.56%
Utilities	166	397.37	-1.9%	-1.9%	0.0%	1,701,775	256,734	139	18.0	1.2	0.34%

Top Gainers

Stock	last Close	Change %	Volume	Value	Trades
OSOS	130	17.12%	47,408	5,863	19
NIH	186	12.05%	44,834,536	8,777,065	3,734
MARAKEZ	60	8.89%	6,046,683	346,355	169
SOOR	302	7.86%	565,420	166,056	144
MENA	128	7.56%	33,180	4,319,152	1,825

Top Losers

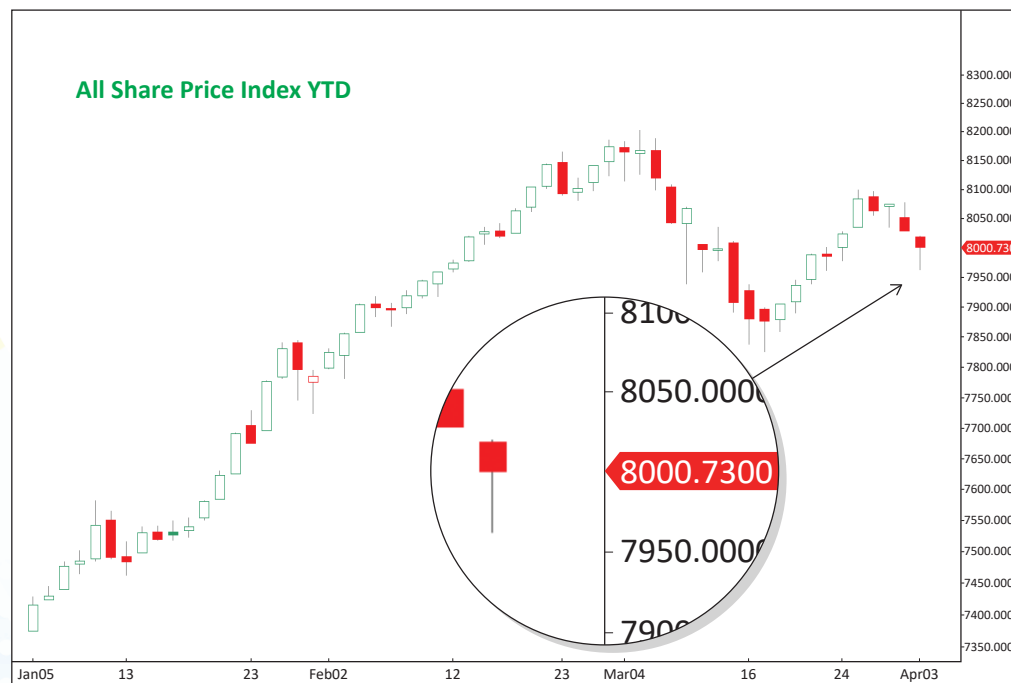
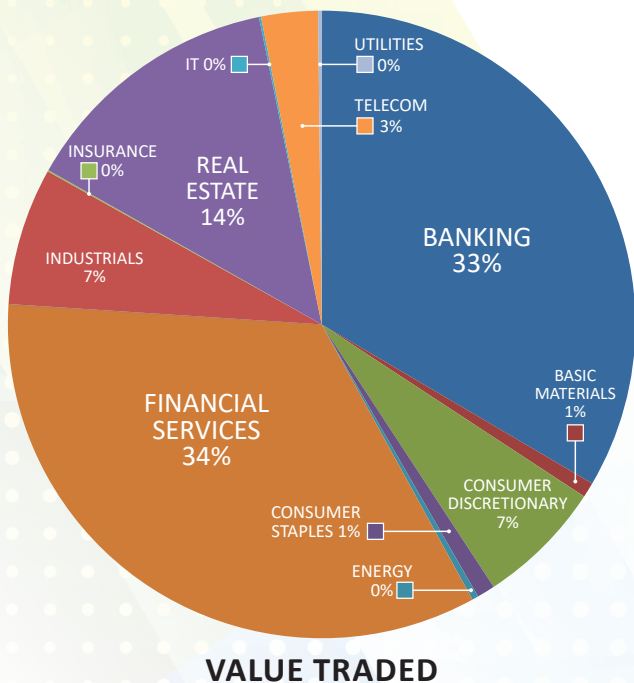
Stock	last Close	Change %	Volume	Value	Trades
KGL	49	-19.17%	3,566,613	184,372	216
EQUIPMENT	50	-17.90%	4,749,866	249,577	279
CLEANING	54	-10.02%	3,293,399	179,170	177
GFC	80	-9.66%	1,000	80	2
DIGITUS	63.5	-9.29%	96,830	6,184	12

Top Volume

Stock	Last	Change %	Volume	Value	Trades
NIH	186	12.05%	44,834,536	8,777,065	3,734
IFA	487	5.87%	34,052,410	16,271,662	1,382
MENA	128	7.56%	33,179,855	4,319,152	1,825
ARZAN	294.0	0.00%	29,115,068	8,667,202	811
KFH	788.0	-0.88%	20,501,201	16,182,027	2,741

Top Value

Stock	Last	Change %	Volume	Value	Trades
IFA	487	5.87%	34,052,410	16,271,662	1,382
KFH	788	-0.88%	20,501,201	16,182,027	2,741
NBK	1,047	-0.10%	14,098,235	14,715,104	1,590
NIH	186	12.05%	44,834,536	8,777,065	3,734
ARZAN	294	0.00%	29,115,068	8,667,202	811



Market Summary:

- Premier Market volume and value dropped by 20% and 13%, respectively. Main Market volume declined by 1%, while value increased by 6%.
- Premier and Main indexes are falling due to the impact of new U.S. tariffs on the global economy.
- Technically, the All Share Index closed at 8,000, with support levels at 7,954, 7,934, and 7,850, and resistance at 8,013. The Premier Index closed at 8,594, with support levels at 8,568, 8,509, and 8,427, and resistance at 8,599. The Main Index closed at 7,205, with support levels at 7,176, 7,123, and 7,088, and resistance at 7,210.