

Market	M. Cap (KD ml)	Last Close	WTD %	MTD %	YTD %	Quantity Traded	Value Traded	No. of Trades	P/E	P/B	% of Total M. Cap
Premier Market	39,413	8,547.05	0.8%	-1.7%	9.0%	634,056,980	255,015,982	40,494	17.6	1.6	81.5%
Main Market	8,959	7,331.75	1.8%	0.0%	6.1%	700,839,141	120,966,590	42,432	13.2	1.0	18.5%
All Share	48,372	7,988.41	1.0%	-1.4%	8.5%	1,334,896,121	375,982,572	82,926	14.7	1.1	100%

Sector	M. Cap (KD ml)	Last Close	WTD %	MTD %	YTD %	Quantity Traded	Value Traded	No. of Trades	P/E	P/B	% of Total M. Cap
Banking	30,334	2,024.63	1.3%	-0.2%	11.9%	293,912,447	140,898,156	17,744	20.3	1.5	62.71%
Basic Materials	500	885.19	2.2%	-5.0%	-2.9%	4,978,864	3,314,399	941	11.7	2.2	1.03%
Consumer Discretionary	1,599	2,336.17	6.6%	0.5%	10.1%	105,642,695	52,316,973	12,607	24.4	1.5	3.31%
Consumer Staples	287	943.89	-5.7%	-8.9%	-5.5%	2,828,816	2,070,112	602	44.8	1.5	0.59%
Energy	269	1,323.39	0.4%	-3.0%	11.3%	43,314,136	7,709,396	3,662	10.5	1.3	0.56%
Financial Services	5,210	1,489.57	-1.2%	-5.0%	-1.4%	362,611,302	60,028,750	17,004	14.5	1.1	10.77%
Health Care	273	568.79	5.6%	9.5%	24.1%	94	73.148	4	27.6	1.7	0.56%
Industrials	2,509	740.81	1.3%	-2.9%	2.4%	71,011,652	33,202,748	8,654	12.9	1.0	5.19%
Insurance	864	2,105.51	1.1%	2.0%	2.4%	1,427,748	216,061	259	9.7	1.1	1.79%
Real Estate	3,188	1,496.15	0.1%	-4.2%	10.6%	428,255,068	67,590,557	18,970	15.7	0.9	6.59%
Technology	15	1,091.25	-6.8%	-32.4%	4.9%	2,582,538	384,983.44	285	NM	1.3	0.03%
Telecommunications	3,158	1,033.53	0.2%	-3.3%	1.6%	15,996,481	7,897,123	1,973	11.3	1.3	6.53%
Utilities	167	400.00	-0.7%	-1.9%	0.7%	2,334,280	353,241	221	18.1	1.2	0.35%

Top Gainers

Stock	last Close	Change %	Volume	Value	Trades
OULAFUEL	599	63.66%	83,252,293	38,842,473	9,046
KBT	141	46.27%	264,284,624	33,814,309	10,442
ENERGYH	206	15.73%	36,977,250	7,293,126	3,388
NICBM	240	14.29%	50,698	12,020	11
SOOR	292	14.06%	2,249,417	631,206	714

Top Losers

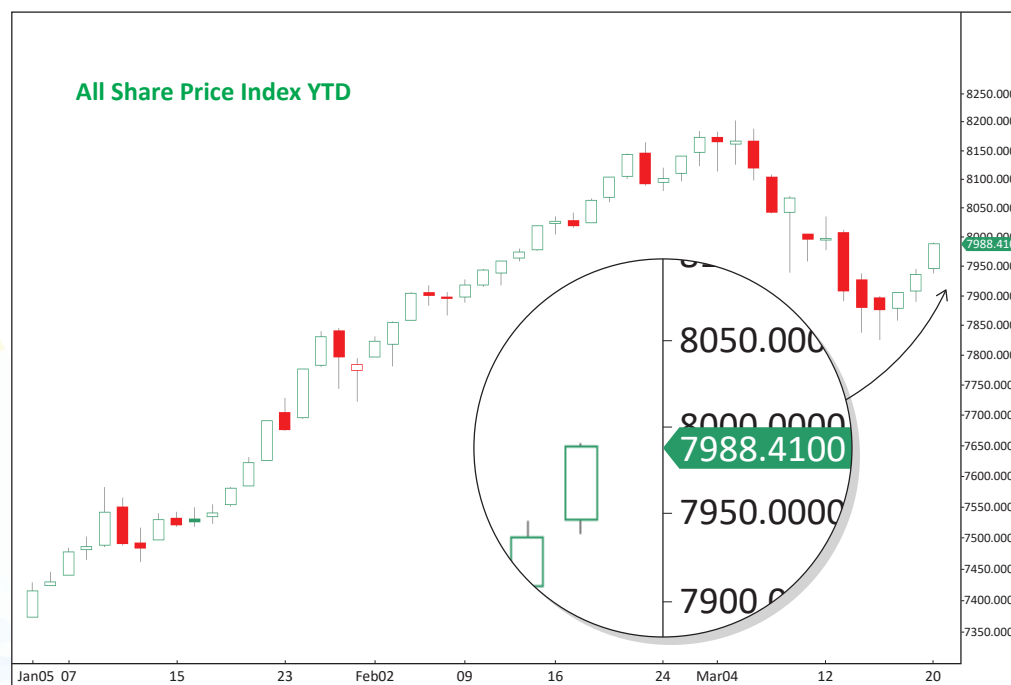
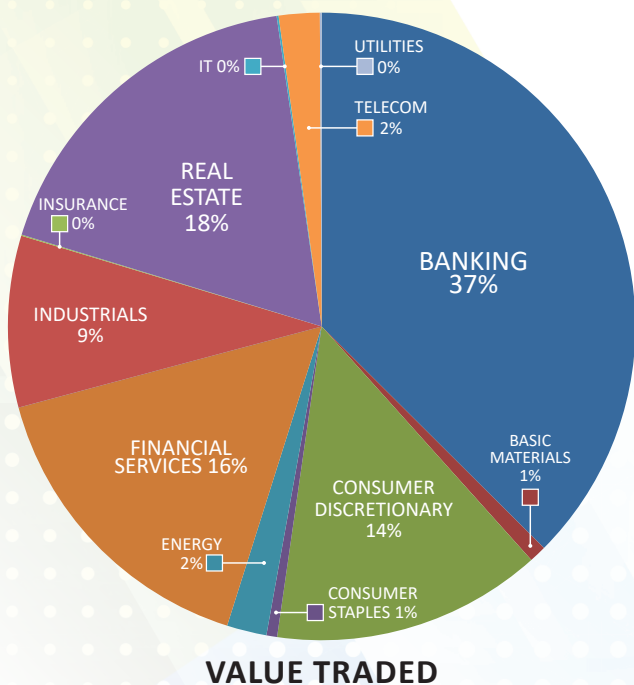
Stock	last Close	Change %	Volume	Value	Trades
UPAC	160	-11.11%	10,939	1,822	13
FACIL	250	-8.76%	1,891,326	480,259	103
ASIYA	36	-7.46%	10,817,322	401,252	407
ASC	150	-6.83%	2,582,538	384,983	285
ARKAN	103.0	-6.36%	3,612,989	399,727	81

Top Volume

Stock	Last	Change %	Volume	Value	Trades
KBT	141	46.27%	264,284,624	33,814,309	10,442
KPROJ	100	4.92%	87,828,426	8,710,639	1,882
OULAFUEL	599	63.66%	83,252,293	38,842,473	9,046
BURG	242.0	4.76%	70,144,808	16,692,679	2,022
KFH	789.0	0.64%	63,880,763	49,866,439	5,412

Top Value

Stock	Last	Change %	Volume	Value	Trades
KFH	789	0.64%	63,880,763	49,866,439	5,412
OULAFUEL	599	63.66%	83,252,293	38,842,473	9,046
NBK	1,041	1.66%	36,358,510	37,462,192	3,343
KBT	141	46.27%	264,284,624	33,814,309	10,442
BURG	242	4.76%	70,144,808	16,692,679	2,022



Market Summary:

- Premier Market volume and value rose by 16% and 15%, respectively, while the Main Market dropped by 55% and 78%.
- The Premier and Main indexes showed positivity with a slight rebound.
- Technically, the All-Share Index closed at 7,988, with support levels at 7,954, 7,934, and 7,850, while resistance was at 8,013. The Premier Index closed at 8,547, with support levels at 8,509, 8,427, and 8,393, while resistance was at 8,568. The Main Index closed at 7,331, with support levels at 7,318, 7,286, and 7,255, while resistance was at 7,357.