

# KUWAIT BOURSA WEEKLY REPORT

WEEK ENDED ON 6 FEBRUARY 2025

Market	M. Cap (KD ml)	Last Close	WTD %	MTD %	YTD %	Quantity Traded	Value Traded	No. of Trades	P/E	P/B	% of Total M. Cap
Premier Market	38,505	8,423.05	1.5%	1.5%	7.5%	842,167,955	311,639,647	48,718	17.3	1.5	80.5%
Main Market	9,305	7,343.24	1.2%	1.2%	6.3%	2,161,246,707	436,906,583	62,460	14.2	1.1	19.5%
All Share	47,809	7,895.39	1.4%	1.4%	7.2%	3,003,414,662	748,546,230	111,178	15.4	1.1	100%

Sector	M. Cap (KD ml)	Last Close	WTD %	MTD %	YTD %	Quantity Traded	Value Traded	No. of Trades	P/E	P/B	% of Total M. Cap
Banking	29,461	1,965.92	1.2%	1.2%	8.6%	257,716,273	130,024,693	18,235	17.1	1.5	61.62%
Basic Materials	519	920.58	4.5%	4.5%	1.0%	4,980,307	3,296,215	1,001	12.3	2.2	1.09%
Consumer Discretionary	1,657	2,420.88	6.0%	6.0%	14.0%	441,153,721	222,620,765	11,806	24.7	1.7	3.47%
Consumer Staples	312	1,028.52	-0.3%	-0.3%	3.0%	4,720,728	2,833,694	400	47.3	1.6	0.65%
Energy	274	1,347.81	1.5%	1.5%	13.3%	15,945,833	2,887,507	1,374	11.4	1.3	0.57%
Financial Services	5,334	1,526.55	-0.8%	-0.8%	1.1%	790,983,128	138,087,368	38,296	14.0	1.1	11.16%
Health Care	215	448.40	-3.3%	-3.3%	-2.2%	5,119	4,074.049	2	18.7	1.4	0.45%
Industrials	2,529	745.99	1.3%	1.3%	3.1%	127,057,440	32,627,277	10,427	14.8	1.1	5.29%
Insurance	863	2,102.98	3.0%	3.0%	2.3%	6,406,149	878,238	579	10.2	1.1	1.80%
Real Estate	3,233	1,521.54	1.3%	1.3%	12.4%	1,308,035,187	193,229,684	23,320	15.7	1.0	6.76%
Technology	14	1,003.95	-4.2%	-4.2%	-3.5%	1,039,909	144,893.64	148	NM	1.2	0.03%
Telecommunications	3,231	1,057.20	4.3%	4.3%	3.9%	41,628,850	21,342,813	5,287	16.7	1.4	6.76%
Utilities	168	402.63	0.7%	0.7%	1.3%	3,742,018	569,009	303	17.3	1.4	0.35%

### Top Gainers

Stock	last Close	Change %	Volume	Value	Trades
KHOT	365	92.11%	201,551	49,323	43
OULAFUEL	572	36.19%	391,008,372	203,145,211	5,786
MRC	168	34.40%	10,770,164	1,600,460	1,062
SOOR	327	25.29%	17,960,838	5,636,137	2,139
UNICAP	297	21.72%	11,376,763	3,115,940	991

### Top Losers

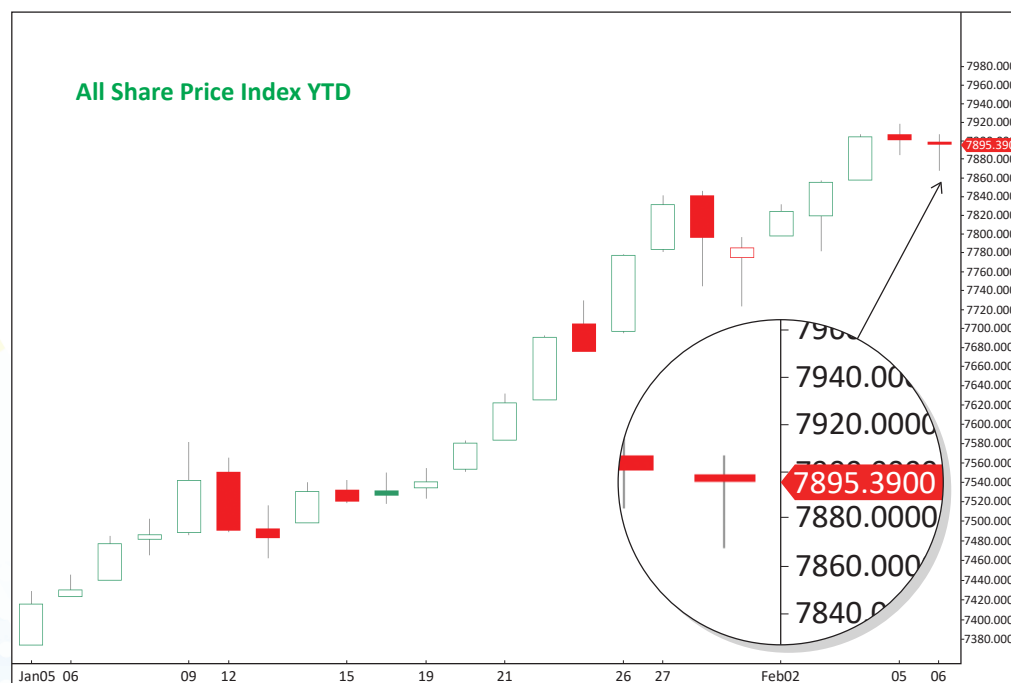
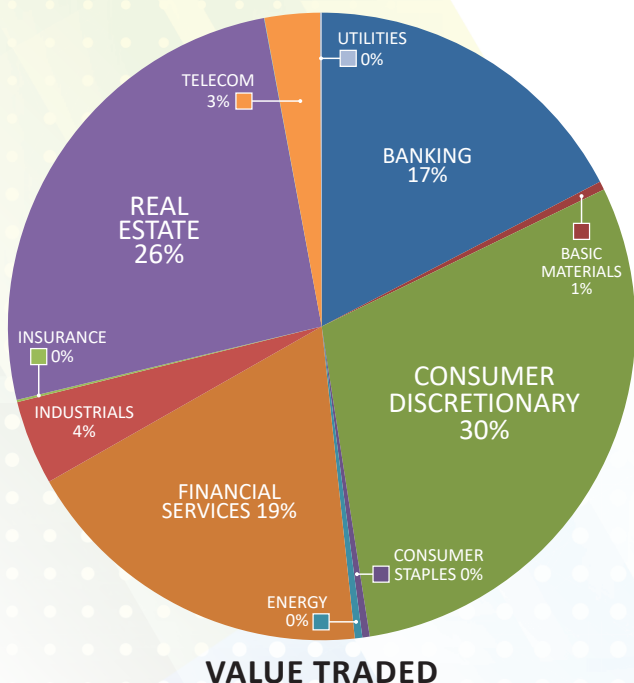
Stock	last Close	Change %	Volume	Value	Trades
KMEFIC	150	-36.44%	52,198,829	9,101,247	4,440
ALDEERA	315	-19.23%	7,495,101	2,721,372	1,573
NIH	203	-15.42%	48,584,757	10,268,938	5,307
EMIRATES	52.5	-10.71%	1,831,427	95,927	70
MARAKEZ	54.3	-6.06%	5,055,687	277,357	583

### Top Volume

Stock	Last	Change %	Volume	Value	Trades
KBT	139	14.88%	783,083,575	102,296,248	3,580
OULAFUEL	572	36.19%	391,008,372	203,145,211	5,786
KRE	326	-1.21%	143,676,062	47,228,217	5,161
ARZAN	271	-5.57%	113,241,936	31,607,397	2,585
SECH	78.7	4.65%	101,128,699	8,684,165	3,873

### Top Value

Stock	Last	Change %	Volume	Value	Trades
OULAFUEL	572	36.19%	391,008,372	203,145,211	5,786
KBT	139	14.88%	783,083,575	102,296,248	3,580
KRE	326	-1.21%	143,676,062	47,228,217	5,161
KFH	794	1.02%	52,154,647	41,214,569	5,942
NBK	982	1.87%	40,180,432	39,740,703	3,758



### Market Summary:

- Premier market volume and value dropped by 36% and 30%, respectively, while the Main market rose by 103% and 171%.
- Both indexes have overcome resistance levels and are moving upwards.
- Technically, the All-Share Index closed at 7,895, with support levels at 7,850, 7,810, and 7,726, while resistance is at 7,934. The Premier Index closed at 8,423, with support levels at 8,393, 8,335, and 8,273, while resistance is at 8,427. The Main Index closed at 7,343, with support levels at 7,286, 7,255, and 7,210, while resistance is at 7,358.