

KUWAIT BOURSA WEEKLY REPORT

WEEK ENDED ON 23 JANUARY 2025

Market	M. Cap (KD ml)	Last Close	WTD %	MTD %	YTD %	Quantity Traded	Value Traded	No. of Trades	P/E	P/B	% of Total M. Cap
Premier Market	37,335	8,165.02	1.9%	4.2%	4.2%	811,437,879	270,738,641	44,886	16.6	1.4	80.3%
Main Market	9,179	7,229.88	2.1%	4.7%	4.7%	883,876,781	141,977,395	46,624	13.4	1.0	19.7%
All Share	46,514	7,676.03	2.0%	4.3%	4.3%	1,695,314,660	412,716,036	91,510	14.8	1.1	100%

Sector	M. Cap (KD ml)	Last Close	WTD %	MTD %	YTD %	Quantity Traded	Value Traded	No. of Trades	P/E	P/B	% of Total M. Cap
Banking	28,742	1,917.37	2.6%	5.9%	5.9%	291,699,062	119,862,579	18,560	19.7	1.4	61.79%
Basic Materials	500	886.80	-0.9%	-2.7%	-2.7%	5,592,709	3,695,236	916	11.7	2.3	1.08%
Consumer Discretionary	1,535	2,243.28	1.5%	5.7%	5.7%	51,157,914	21,943,582	5,437	27.3	1.6	3.30%
Consumer Staples	307	1,011.38	1.0%	1.3%	1.3%	4,352,019	2,023,430	572	46.8	1.6	0.66%
Energy	265	1,304.89	7.6%	9.7%	9.7%	5,648,265	621,357	620	11.0	1.3	0.57%
Financial Services	5,345	1,524.67	0.9%	0.9%	0.9%	591,365,839	119,834,374	32,398	14.1	1.1	11.49%
Health Care	222	463.60	1.3%	1.2%	1.2%	6,109	2,639,964	7	19.0	1.5	0.48%
Industrials	2,428	716.63	-0.8%	-1.0%	-1.0%	98,103,177	19,401,392	7,900	14.4	1.0	5.22%
Insurance	812	1,976.72	-0.9%	-3.8%	-3.8%	6,567,402	583,595	620	9.7	1.1	1.75%
Real Estate	3,103	1,461.10	4.1%	8.0%	8.0%	606,814,412	112,208,708	20,451	15.6	0.9	6.67%
Technology	14	1,040.32	0.0%	0.0%	0.0%	2,988,284	455,875.32	317	NM	1.2	0.03%
Telecommunications	3,071	1,004.74	-0.1%	-1.3%	-1.3%	23,376,339	10,908,874	3,035	16.2	1.4	6.60%
Utilities	168	402.63	0.7%	1.3%	1.3%	7,643,129	1,174,395	677	17.3	1.4	0.36%

Top Gainers

Stock	last Close	Change %	Volume	Value	Trades
ARGAN	121	33.70%	57,774,899	6,432,516	1,891
ATC	460	18.25%	6,050	2,593	5
NAPESCO	1,000	15.47%	42,842	41,594	45
KHOT	199	15.03%	3,087	587	4
ALTIJARIA	173	13.07%	25,825,069	4,178,176	877

Top Losers

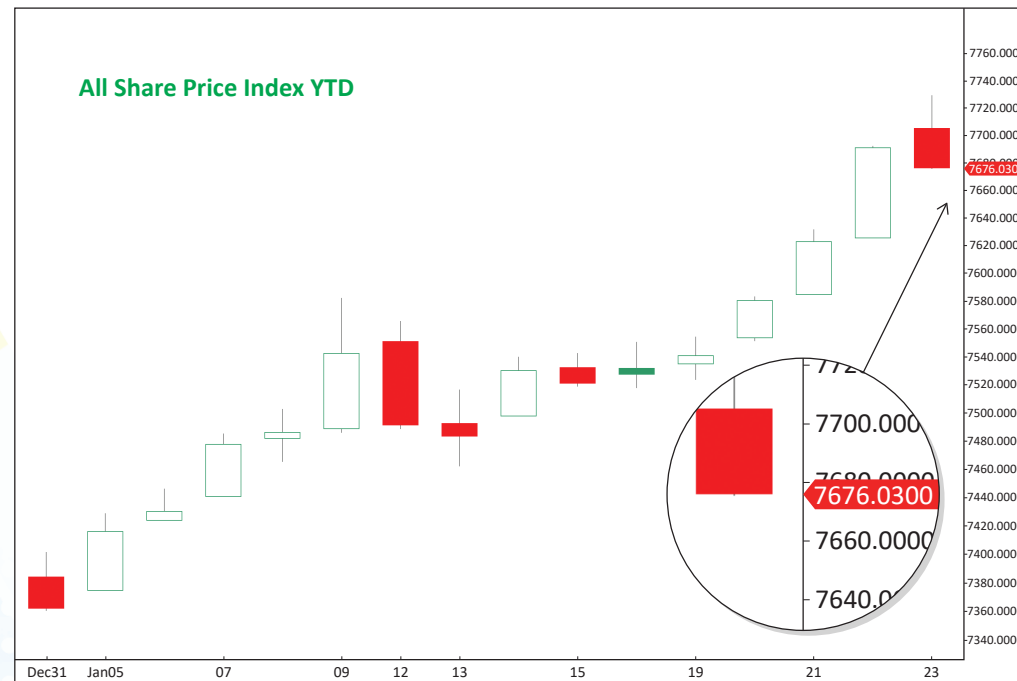
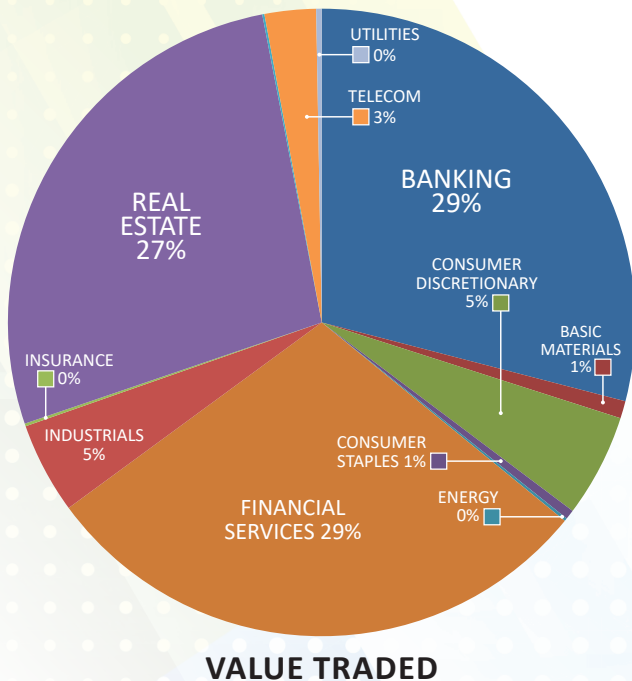
Stock	last Close	Change %	Volume	Value	Trades
KMEFIC	220	-23.88%	47,282,335	11,576,279	4,366
NIH	247	-8.18%	29,074,059	7,432,750	4,290
WETHAQ	41	-8.07%	5,183,842	219,621	352
JAZEERA	947	-7.88%	2,496,176	2,487,255	1,102
EKTTITAB	14.1	-7.24%	4,926,819	71,276	159

Top Volume

Stock	Last	Change %	Volume	Value	Trades
KRE	312	9.86%	227,040,275	67,530,397	6,740
KBT	114	10.68%	149,002,117	16,261,564	2,441
WARBABANK	233	4.95%	77,572,418	18,104,457	4,468
ARZAN	278	0.36%	67,107,003	18,619,975	1,705
IFA	467	10.66%	66,852,271	30,138,720	3,300

Top Value

Stock	Last	Change %	Volume	Value	Trades
KRE	312	9.86%	227,040,275	67,530,397	6,740
KFH	779	2.91%	52,571,220	40,618,158	5,243
IFA	467	10.66%	66,852,271	30,138,720	3,300
NBK	950	2.15%	20,338,804	19,155,787	2,361
ARZAN	278	0.36%	67,107,003	18,619,975	1,705



Market Summary:

- Premier market volume dropped 6%, while value rose 2%. Main market volume and value dropped 12% and 15%, respectively.
- Both the Premier and Main indexes are moving upwards, with the Main index reaching a new all-time high.
- Technically, the All Share index closed at 7676, with support levels at 7676, 7635, and 7574, and resistance at 7726. The Premier index closed at 8165, with support levels at 8151, 8116, and 8083, and resistance at 8199. The Main index closed at 7229, with support levels at 7210, 7176, and 7123, and resistance at 7286.