

KUWAIT BOURSA WEEKLY REPORT

WEEK ENDED ON 16 JANUARY 2025

Market	M. Cap (KD ml)	Last Close	WTD %	MTD %	YTD %	Quantity Traded	Value Traded	No. of Trades	P/E	P/B	% of Total M. Cap
Premier Market	36,628	8,009.63	-0.2%	2.2%	2.2%	863,035,819	264,480,151	46,254	14.8	1.4	80.3%
Main Market	8,997	7,079.95	-0.3%	2.5%	2.5%	1,000,069,360	167,025,004	49,763	13.9	1.1	19.7%
All Share	45,625	7,527.46	-0.2%	2.2%	2.2%	1,863,105,179	431,505,155	96,017	14.5	1.1	100%

Sector	M. Cap (KD ml)	Last Close	WTD %	MTD %	YTD %	Quantity Traded	Value Traded	No. of Trades	P/E	P/B	% of Total M. Cap
Banking	28,023	1,869.65	0.0%	3.3%	3.3%	471,220,051	162,064,229	26,003	16.5	1.4	61.42%
Basic Materials	505	895.27	0.1%	-1.8%	-1.8%	2,682,788	1,795,771	407	11.5	2.1	1.11%
Consumer Discretionary	1,513	2,210.05	0.7%	4.1%	4.1%	31,038,900	16,496,232	4,499	25.4	1.5	3.32%
Consumer Staples	304	1,001.43	-0.4%	0.3%	0.3%	2,633,398	1,885,886	379	71.5	NM	0.67%
Energy	246	1,213.12	1.5%	2.0%	2.0%	15,855,332	2,774,678	1,163	11.1	1.5	0.54%
Financial Services	5,311	1,510.63	-1.1%	0.0%	0.0%	711,983,959	150,707,716	34,070	16.8	1.2	11.64%
Health Care	220	457.86	-0.1%	-0.1%	-0.1%	70,420	54,275,400	18	17.3	2.0	0.48%
Industrials	2,449	722.59	-2.0%	-0.1%	-0.1%	111,360,525	23,558,605	8,109	14.2	1.1	5.37%
Insurance	819	1,995.27	0.2%	-2.9%	-2.9%	19,337,897	1,533,722	1,185	9.9	1.1	1.80%
Real Estate	2,980	1,403.25	1.9%	3.7%	3.7%	472,674,205	61,617,865	17,166	14.7	0.9	6.53%
Technology	14	1,040.32	-4.0%	0.0%	0.0%	247,984	36,398.32	43	NM	1.2	0.03%
Telecommunications	3,074	1,005.76	-1.5%	-1.2%	-1.2%	16,261,750	7,824,142	2,505	13.8	1.0	6.74%
Utilities	167	400.00	1.3%	0.7%	0.7%	7,737,970	1,155,636	470	17.2	1.4	0.37%

Top Gainers

Stock	last Close	Change %	Volume	Value	Trades
KBT	103	24.10%	235,638,100	23,793,155	6,485
MADAR	135	19.47%	33,372,987	4,010,517	1,745
URC	126	12.50%	22,882,489	2,734,204	1,032
OULAFUEL	371	8.16%	18,557,292	7,086,216	1,438
MASHAER	84	7.69%	13,310,731	1,069,874	513

Top Losers

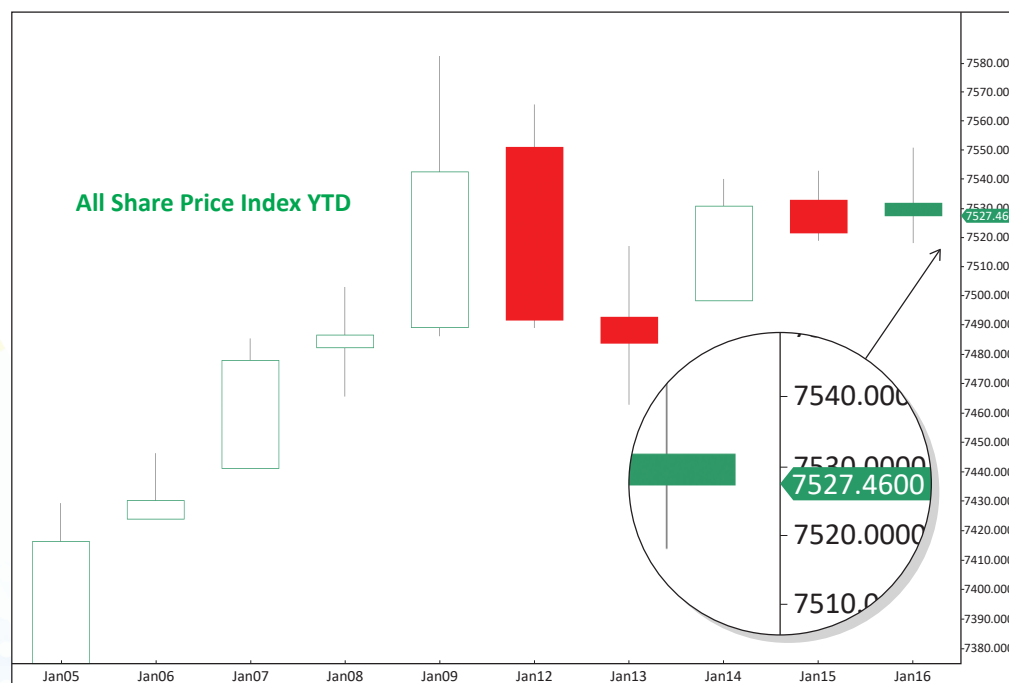
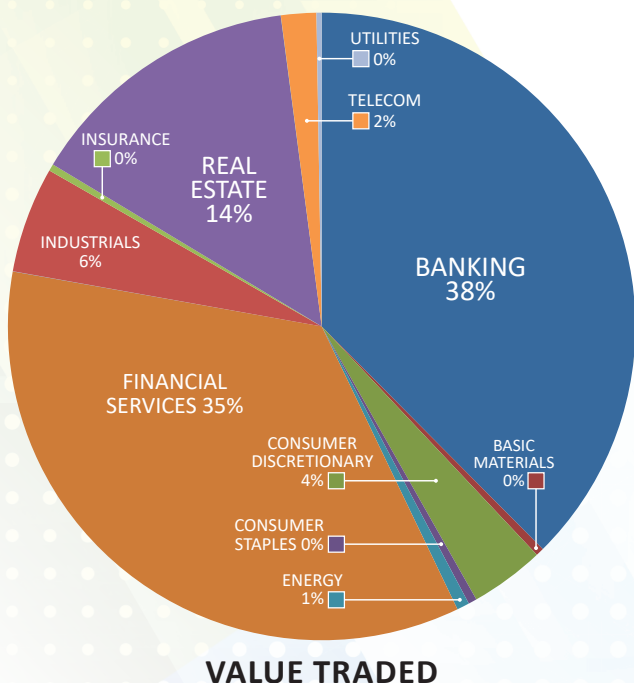
Stock	last Close	Change %	Volume	Value	Trades
NIH	269	-30.31%	30,202,014	8,956,725	3,842
INOVEST	98.5	-14.35%	88,047,573	9,539,435	3,116
ENERGYH	166.0	-7.78%	11,213,410	1,949,634	764
MENA	138	-7.38%	4,973,993	713,288	606
EQUIPMENT	71.7	-7.24%	10,107,192	737,920	444

Top Volume

Stock	Last	Change %	Volume	Value	Trades
KBT	103	24.10%	235,638,100	23,793,155	6,485
WARBABANK	222	-4.31%	188,871,960	44,581,998	9,468
IFA	422	4.98%	115,309,938	48,438,538	4,617
GBK	300	-3.54%	99,259,273	30,436,460	3,243
INOVEST	98.5	-14.35%	88,047,573	9,539,435	3,116

Top Value

Stock	Last	Change %	Volume	Value	Trades
IFA	422	4.98%	115,309,938	48,438,538	4,617
WARBABANK	222	-4.31%	188,871,960	44,581,998	9,468
GBK	300	-3.54%	99,259,273	30,436,460	3,243
KFH	757	0.00%	39,502,046	29,869,500	4,151
ARZAN	277	1.47%	87,948,690	24,051,619	2,373



Market Summary:

- Premier market volume and value dropped by 9% and 11%, respectively, while the Main market rose by 41% and 63%.
- Both the Premier and Main indexes are moving horizontally after reaching their targets.
- Technically, the All Share index closed at 7527, with support levels at 7503, 7481, and 7461, and resistance at 7556. The Premier index closed at 8009, with support levels at 7997, 7945, and 7916, and resistance at 8044. The Main index closed at 7079, with support levels at 7051, 7003, and 6956, and resistance at 7088.