

KUWAIT BOURSA WEEKLY REPORT

WEEK ENDED ON 9 JANUARY 2025

Market	M. Cap (KD ml)	Last Close	WTD %	MTD %	YTD %	Quantity Traded	Value Traded	No. of Trades	P/E	P/B	% of Total M. Cap
Premier Market	36,689	8,024.35	2.4%	2.4%	2.4%	948,500,582	298,587,277	48,131	16.4	1.5	80.3%
Main Market	9,000	7,097.85	2.8%	2.8%	2.8%	708,385,619	102,482,363	38,387	13.3	1.0	19.7%
All Share	45,689	7,542.31	2.4%	2.4%	2.4%	1,656,886,201	401,069,641	86,518	14.2	1.1	100%

Sector	M. Cap (KD ml)	Last Close	WTD %	MTD %	YTD %	Quantity Traded	Value Traded	No. of Trades	P/E	P/B	% of Total M. Cap
Banking	28,036	1,870.35	3.3%	3.3%	3.3%	572,042,255	196,660,390	25,470	19.1	1.4	61.36%
Basic Materials	505	894.13	-1.9%	-1.9%	-1.9%	3,301,647	2,206,513	658	11.5	2.4	1.10%
Consumer Discretionary	1,503	2,195.44	3.4%	3.4%	3.4%	22,259,830	10,747,052	4,078	23.5	1.5	3.29%
Consumer Staples	305	1,005.20	0.7%	0.7%	0.7%	3,056,289	1,748,349	458	45.8	1.6	0.67%
Energy	243	1,195.33	0.5%	0.5%	0.5%	14,732,728	2,292,183	1,110	10.3	1.3	0.53%
Financial Services	5,340	1,526.89	1.1%	1.1%	1.1%	542,504,950	106,111,715	26,933	14.1	1.1	11.69%
Health Care	220	458.29	0.0%	0.0%	0.0%	421,011	328,007.407	15	17.3	1.4	0.48%
Industrials	2,499	737.15	1.9%	1.9%	1.9%	90,860,307	20,276,610	7,276	14.1	1.1	5.47%
Insurance	818	1,992.21	-3.1%	-3.1%	-3.1%	50,716,305	3,096,517	1,834	10.0	1.1	1.79%
Real Estate	2,922	1,376.56	1.7%	1.7%	1.7%	322,866,692	45,517,116	14,261	15.3	0.9	6.40%
Technology	15	1,083.97	4.2%	4.2%	4.2%	319,105	46,137.57	60	NM	1.3	0.03%
Telecommunications	3,120	1,021.06	0.3%	0.3%	0.3%	20,226,961	10,017,697	3,655	16.4	1.4	6.83%
Utilities	165	394.74	-0.7%	-0.7%	-0.7%	13,578,121	2,021,354	710	17.0	1.3	0.36%

Top Gainers

Stock	last Close	Change %	Volume	Value	Trades
NICBM	219	23.73%	434,384	80,761	60
ENERGYH	180	21.62%	9,599,130	1,608,127	669
WARBABANK	232	20.83%	213,293,487	46,497,278	8,401
CBK	730	13.18%	141,112	99,242	81
IFAHR	2,064	11.57%	1,795,860	3,748,612	1,030

Top Losers

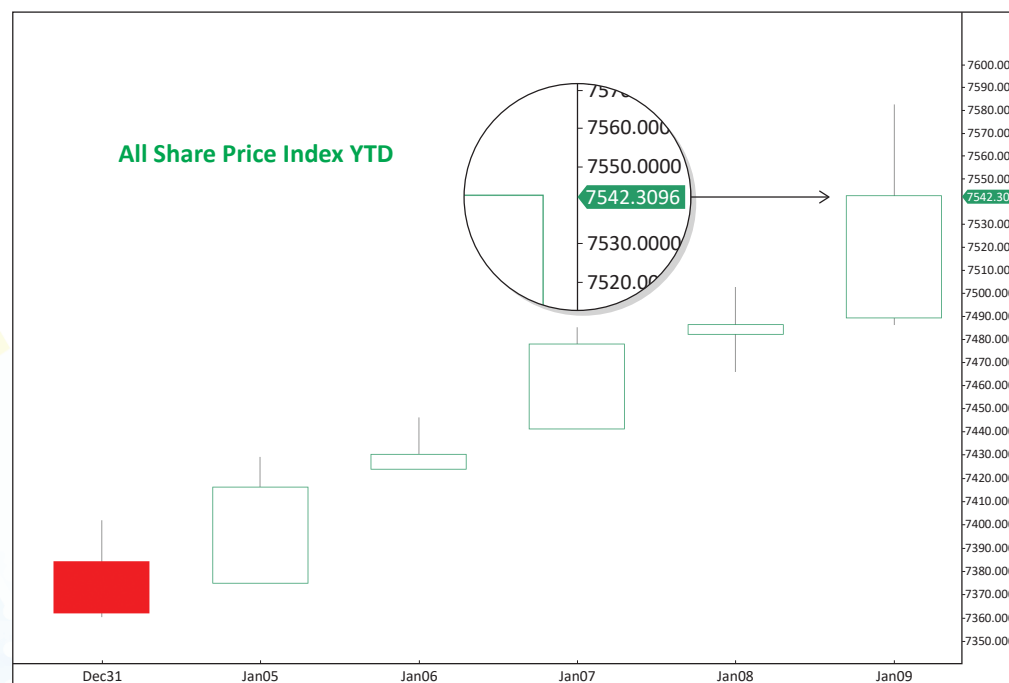
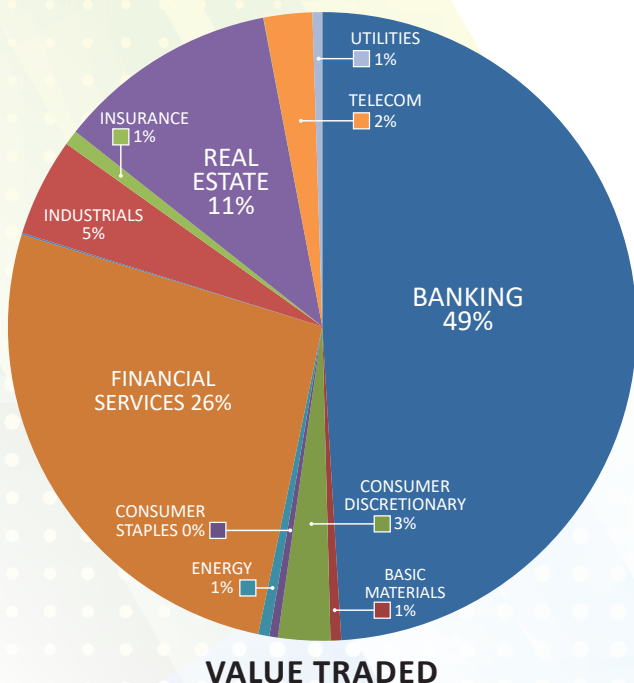
Stock	last Close	Change %	Volume	Value	Trades
ALKOUT	1,029	-17.61%	11,711	12,329	21
AINS	761	-14.97%	964	784	11
WETHAQ	47.6	-9.85%	49,372,677	2,648,330	1,597
ALEID	235	-9.27%	8,739,032	2,090,600	861
AGHC	408	-8.11%	10,352,033	4,340,100	1,103

Top Volume

Stock	Last	Change %	Volume	Value	Trades
WARBABANK	232	20.83%	213,293,487	46,497,278	8,401
GBK	311	-4.60%	182,463,247	58,365,894	3,810
KBT	83	2.85%	77,275,919	6,561,837	3,427
KRE	270	5.47%	69,142,994	18,085,222	2,395
ARZAN	273	3.02%	60,896,160	16,725,227	2,334

Top Value

Stock	Last	Change %	Volume	Value	Trades
GBK	311	-4.60%	182,463,247	58,365,894	3,810
WARBABANK	232	20.83%	213,293,487	46,497,278	8,401
KFH	757	1.47%	53,512,081	40,352,798	5,185
NBK	925	3.24%	22,590,636	20,550,337	2,209
IFA	402	5.79%	47,498,716	18,815,978	2,748



Market Summary:

- Premier market volume and value rose by 140% and 123%, respectively, while the Main market dropped by 14% and 7%.
- The Premier index moved upwards due to an increase in buying blue chips, while the Main index slowed down.
- Technically, the All Share index closed at 7542, with support levels at 7503, 7481, and 7461, and resistance at 7556. The Premier index closed at 8024, with support levels at 7997, 7945, and 7916, and resistance at 8044. The Main index closed at 7097, with support levels at 7088, 7051, and 7003, and resistance at 7123.