

KUWAIT BOURSA WEEKLY REPORT

WEEK ENDED ON 2 MAY 2024

Market	M. Cap (KD ml)	Last Close	WTD %	MTD %	YTD %	Quantity Traded	Value Traded	No. of Trades	P/E	P/B	% of Total M. Cap
Premier Market	34,862	7,651.03	-0.2%	-0.5%	2.3%	582,588,459	190,421,971	42,534	16.8	1.3	81.7%
Main Market	7,804	5,985.54	1.4%	1.1%	7.5%	481,792,086	51,936,029	26,976	12.2	0.8	18.3%
All Share	42,666	7,033.48	0.1%	-0.2%	3.2%	1,064,380,545	242,358,000	69,510	13.7	0.9	100%

Sector	M. Cap (KD ml)	Last Close	WTD %	MTD %	YTD %	Quantity Traded	Value Traded	No. of Trades	P/E	P/B	% of Total M. Cap
Banking	25,794	1,722.31	-0.3%	-0.5%	4.5%	166,188,511	77,839,795	14,394	16.9	1.2	60.46%
Basic Materials	472	837.22	-0.5%	-2.0%	12.2%	6,339,900	4,324,242	588	9.6	2.2	1.11%
Consumer Discretionary	1,154	1,676.44	1.5%	-0.2%	4.5%	81,556,614	13,824,631	5,322	12.9	1.2	2.70%
Consumer Staples	252	830.56	-1.1%	-0.3%	26.1%	3,710,561	2,010,966	333	107.3	1.4	0.59%
Energy	221	1,058.57	2.1%	-0.3%	11.5%	10,944,243	1,063,812	546	9.8	0.8	0.52%
Financial Services	4,768	1,339.78	0.4%	0.5%	10.5%	360,148,939	44,566,806	13,198	14.8	0.9	11.18%
Health Care	234	487.29	3.8%	0.0%	1.1%	88,358	68,963.080	44	13.2	1.6	0.55%
Industrials	2,597	765.93	1.5%	-0.3%	-15.6%	176,626,742	56,681,092	9,193	12.2	0.9	6.09%
Insurance	1,020	2,495.51	-2.4%	0.3%	8.8%	13,822,653	1,657,887	1,868	10.3	1.1	2.39%
Real Estate	2,732	1,284.73	0.3%	-0.1%	5.9%	222,745,892	30,518,291	8,252	14.8	0.7	6.40%
Technology	26	1,906.05	0.0%	0.0%	229.6%	0	0.00	0	NM	2.2	0.06%
Telecommunications	3,218	1,053.06	1.6%	0.9%	-4.7%	17,309,650	9,020,787	3,043	16.7	1.4	7.54%
Utilities	176	421.05	3.2%	-3.6%	-7.5%	4,898,482	780,726	551	14.0	1.5	0.41%

Top Gainers

Stock	last Close	Change %	Volume	Value	Trades
UNICAP	139	43.74%	44,011,672	5,813,464.909	1,906
MENA	52	30.00%	26,607,976	1,167,680	1,351
GFC	96.2	18.47%	41,604	3,741	10
FUTUREKID	157	14.60%	35,135,435	5,386,768	2,120
MIDAN	799	12.38%	88,158	68,867	43

Top Losers

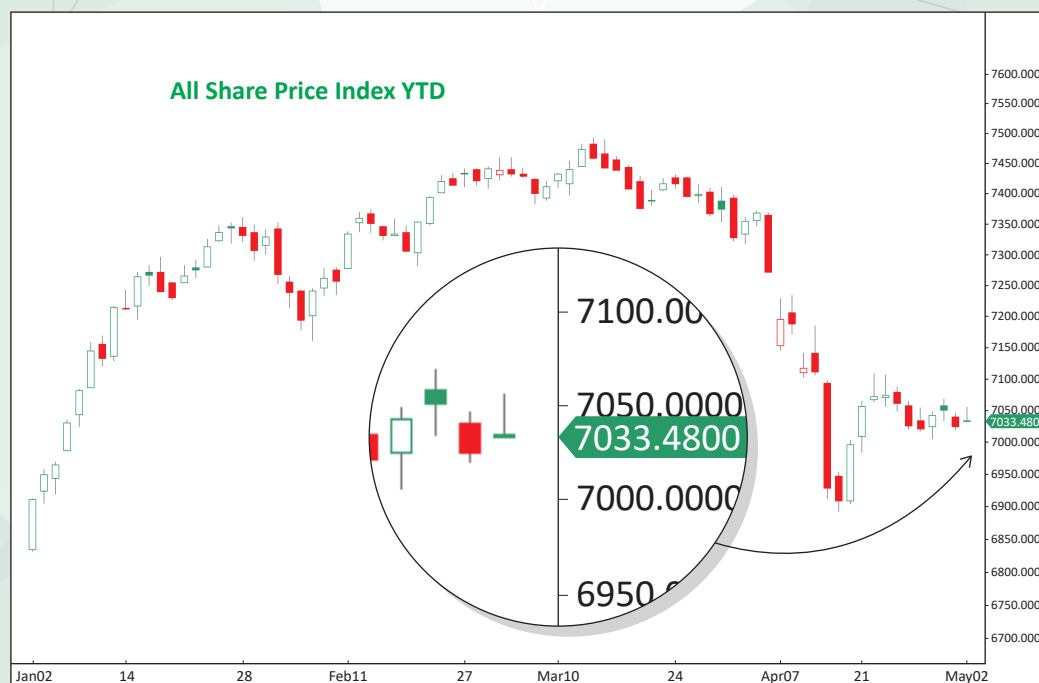
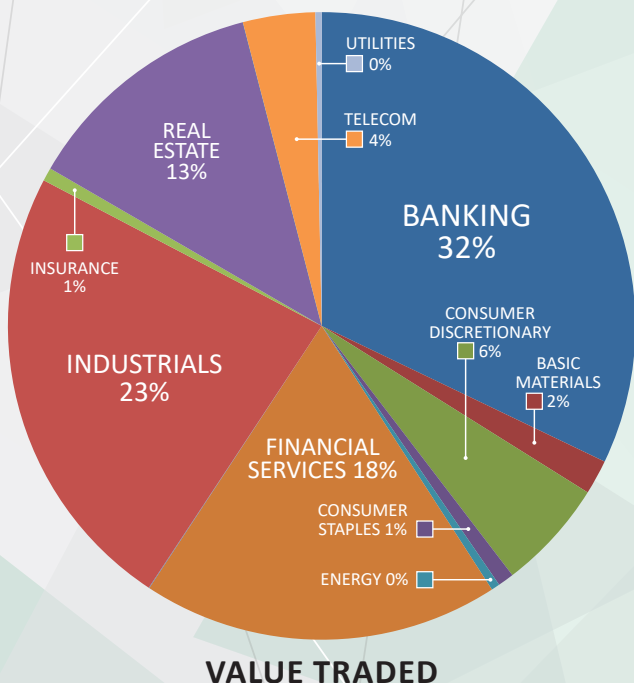
Stock	last Close	Change %	Volume	Value	Trades
WINSRE	110	-12.34%	814,624	94,372	125
PAPER	159	-10.67%	639,855	106,931	141
EMIRATES	33.9	-9.12%	952,405	33,180	60
MRC	86.7	-7.96%	14,948	1,368	9
FTI	188	-7.84%	6,130,956	1,194,332	1,693

Top Volume

Stock	Last	Change %	Volume	Value	Trades
AGLTY	316	4.29%	143,793,661	45,848,823	7,524
GFH	86.1	3.73%	89,096,666	7,710,627	1,729
NRE	101	4.69%	67,004,659	6,774,703	1,886
KFH	717	-0.83%	51,336,758	36,942,731	7,560
ASIYA	43.2	3.10%	50,169,452	2,167,816	1,433

Top Value

Stock	Last	Change %	Volume	Value	Trades
AGLTY	316	4.29%	143,793,661	45,848,823	7,524
KFH	717	-0.83%	51,336,758	36,942,731	7,560
NBK	858	-0.58%	23,326,215	20,093,007	2,908
GFH	86.1	3.73%	89,096,666	7,710,627	1,729
ZAIN	488	0.62%	14,041,621	6,873,596	2,277



Market Summary:

- Premier volume and value dropped 3% and 13%, while the Main Market rose 32% and 26%, respectively.
- The Premier index is moving horizontally, while the Main index showed strength.
- Technically, the All Share index closed at 7033, with support levels at 7000, 6981, and 6959, and resistance at 7041. The Premier index closed at 7651, with support levels at 7649, 7591, and 7555, and resistance at 7657/7685. The Main index closed at 5985, with support levels at 5970, 5959, and 5940, and resistance at 5990.