

KUWAIT BOURSA WEEKLY REPORT

WEEK ENDED ON 25 APRIL 2024

Market	M. Cap (KD ml)	Last Close	WTD %	MTD %	YTD %	Quantity Traded	Value Traded	No. of Trades	P/E	P/B	% of Total M. Cap
Premier Market	34,899	7,663.14	0.3%	-4.6%	2.5%	603,233,587	219,761,041	50,168	16.7	1.3	81.8%
Main Market	7,754	5,902.92	1.2%	-1.4%	6.0%	364,143,539	41,197,837	22,872	12.3	0.8	18.2%
All Share	42,653	7,026.05	0.4%	-4.1%	3.1%	967,377,126	260,958,878	73,040	13.6	0.9	100%

Sector	M. Cap (KD ml)	Last Close	WTD %	MTD %	YTD %	Quantity Traded	Value Traded	No. of Trades	P/E	P/B	% of Total M. Cap
Banking	25,877	1,727.85	0.2%	-2.5%	4.9%	224,090,087	106,418,101	19,829	17.1	1.3	60.67%
Basic Materials	475	841.70	7.9%	6.6%	12.8%	11,607,232	7,661,883	2,605	9.6	2.2	1.11%
Consumer Discretionary	1,135	1,651.48	0.8%	-5.7%	3.0%	74,029,412	8,904,413	5,037	12.3	1.2	2.66%
Consumer Staples	255	840.13	2.6%	8.7%	27.6%	2,276,605	1,420,213	269	106.5	1.4	0.60%
Energy	217	1,037.26	2.4%	-0.5%	9.3%	10,543,166	1,035,172	661	9.6	0.8	0.51%
Financial Services	4,784	1,334.76	2.9%	-1.4%	10.1%	239,185,624	35,244,178	13,062	14.8	0.8	11.22%
Health Care	216	450.12	-4.2%	31.0%	-6.6%	3,445,856	2,639,081.080	483	12.6	1.5	0.51%
Industrials	2,560	754.66	-3.9%	-27.8%	-16.9%	170,810,918	58,221,155	16,129	12.6	0.9	6.00%
Insurance	1,045	2,557.00	0.1%	-0.4%	11.5%	16,546,913	2,470,717	3,031	10.4	1.1	2.45%
Real Estate	2,724	1,280.71	0.6%	-1.2%	5.6%	196,008,784	28,422,287	8,569	15.1	0.7	6.39%
Technology	26	1,906.05	0.0%	0.0%	229.6%	0	0.00	0	NM	2.2	0.06%
Telecommunications	3,168	1,036.87	-0.7%	-2.6%	-6.2%	15,947,083	8,081,702	2,984	9.7	1.3	7.43%
Utilities	171	407.89	0.6%	-8.3%	-10.4%	2,885,446	439,974	381	13.5	1.4	0.40%

Top Gainers

Stock	last Close	Change %	Volume	Value	Trades
MIDAN	711	82.31%	3,444,856	2,638,602.077	482
FTI	204	71.43%	9,424,225	2,033,485	2,384
PAPCO	185	19.35%	2,087,792	393,194	702
KPPC	38	17.28%	3,061,825	105,014	147
TAHSSILAT	43.4	16.35%	4,143,189	190,134	436

Top Losers

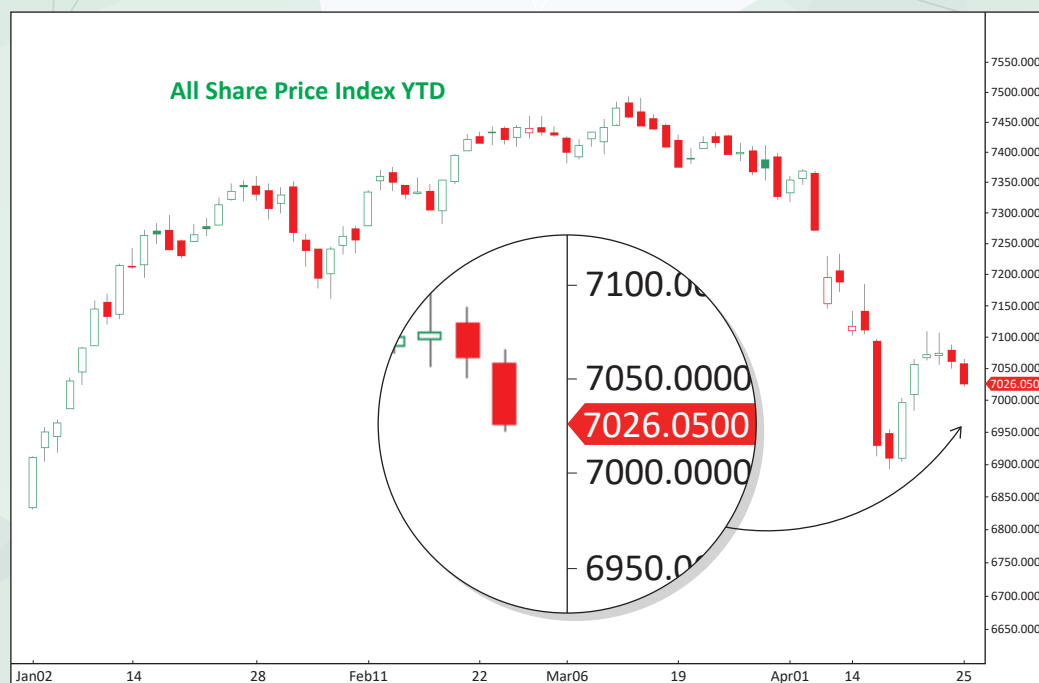
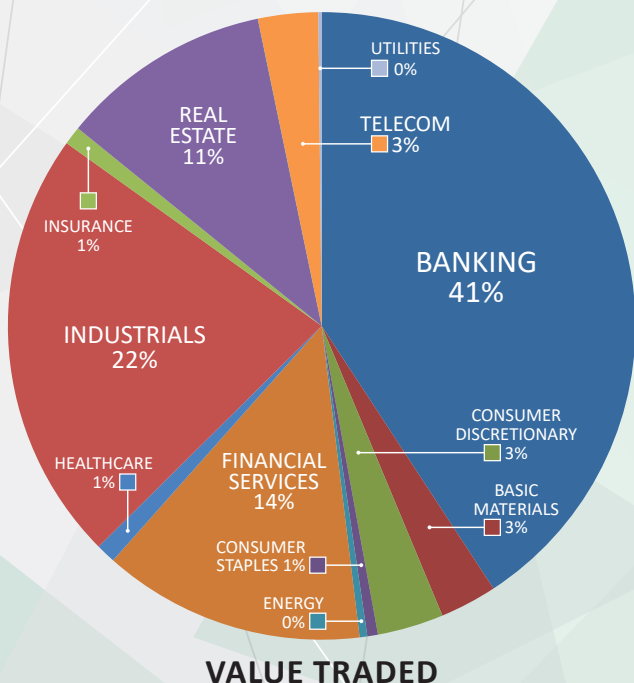
Stock	last Close	Change %	Volume	Value	Trades
MADAR	82	-9.29%	75,000	6,207	15
HUMANSOFT	2,900	-9.08%	1,491,541	4,494,464	2,374
AMAR	64	-8.57%	150,541	9,758	9
TIJARA	57	-7.92%	3,747,145	222,340	225
PCEM	839	-7.09%	187,720	164,754	112

Top Volume

Stock	Last	Change %	Volume	Value	Trades
AGLTY	303	-7.06%	146,957,927	46,390,547	10,713
NRE	96	-5.88%	86,532,119	8,619,128	1,532
KFH	723	-0.55%	74,156,975	54,173,243	8,565
JIYAD	19.2	5.49%	50,426,550	1,061,341	1,421
GBK	257	-1.91%	49,176,321	12,716,142	1,650

Top Value

Stock	Last	Change %	Volume	Value	Trades
KFH	723	-0.55%	74,156,975	54,173,243	8,565
AGLTY	303	-7.06%	146,957,927	46,390,547	10,713
NBK	863	1.65%	24,554,676	21,175,084	3,908
GBK	257	-1.91%	49,176,321	12,716,142	1,650
NRE	96	-5.88%	86,532,119	8,619,128	1,532



Market Summary:

- Premier volume and value dropped 27% and 29%, while the Main market rose 13% and 11%, respectively.
- The Premier index retreated out of the resistance level, while the Main index showed stability.
- Technically, the All Share index closed at 7026, with support levels at 7000, 6981, and 6959, while resistance at 7041. The Premier index closed at 7663, with support levels at 7657, 7591, and 7555, while resistance at 7716. The Main index closed at 5902, with support levels at 5902, 5881, and 5865, while resistance was at 5925.