

Market	M. Cap (KD ml)	Last Close	WTD %	MTD %	YTD %	Quantity Traded	Value Traded	No. of Trades	P/E	P/B	% of Total M. Cap
Premier Market	37,008	8,117.16	-0.4%	-0.5%	8.6%	404,843,582	128,010,414	28,478	18.1	1.3	82.6%
Main Market	7,806	6,121.01	-0.2%	0.6%	9.9%	223,825,624	31,004,775	14,942	12.8	0.8	17.4%
All Share	44,814	7,415.81	-0.4%	-0.3%	8.8%	628,669,206	159,015,188	43,420	14.3	1.0	100%

Sector	M. Cap (KD ml)	Last Close	WTD %	MTD %	YTD %	Quantity Traded	Value Traded	No. of Trades	P/E	P/B	% of Total M. Cap
Banking	26,888	1,795.27	-0.4%	-0.8%	9.0%	120,582,974	57,200,998	9,536	17.2	1.3	60.00%
Basic Materials	441	782.28	0.1%	0.3%	4.9%	2,657,798	1,614,574	865	10.4	2.3	0.99%
Consumer Discretionary	1,191	1,731.59	3.6%	3.9%	8.0%	32,400,920	12,619,754	4,429	12.7	1.5	2.66%
Consumer Staples	224	735.74	2.9%	2.9%	11.7%	5,910,160	2,518,794	641	109.6	1.3	0.50%
Energy	216	1,036.09	0.2%	0.2%	9.2%	1,774,208	160,066	243	10.5	0.8	0.48%
Financial Services	4,744	1,383.84	-0.4%	-0.2%	14.2%	292,502,783	39,912,863	11,730	18.2	0.9	10.59%
Health Care	233	485.91	3.5%	-0.1%	0.8%	200	96.000	1	13.1	1.6	0.52%
Industrials	3,452	1,011.89	-1.1%	-0.3%	11.5%	43,398,625	18,210,096	5,369	13.8	1.0	7.70%
Insurance	1,044	2,554.03	-0.1%	1.3%	11.4%	8,744,518	629,400	895	10.4	1.2	2.33%
Real Estate	2,766	1,300.98	-0.5%	1.7%	7.3%	105,057,425	18,198,640	6,553	16.9	0.7	6.17%
Technology	27	1,935.15	-0.7%	-4.7%	234.6%	86,518	22,691.17	33	NM	2.3	0.06%
Telecommunications	3,402	1,113.06	-0.9%	-0.4%	0.7%	14,388,448	7,730,594	2,869	10.1	1.4	7.59%
Utilities	186	444.74	-0.6%	-0.6%	-2.3%	1,164,629	196,623	256	14.8	1.5	0.41%

### Top Gainers

Stock	last Close	Change %	Volume	Value	Trades
KCIN	1,415	15.51%	109,961	143,944	27
IFAHR	1,120	7.69%	3,417,515	3,800,612	1,292
MENA	41.9	7.16%	7,657,343	324,406	234
TAHSSILAT	51	7.14%	1,730,864	84,908	193
KPROJ	132	5.60%	91,053,999	11,854,699	1,414

### Top Losers

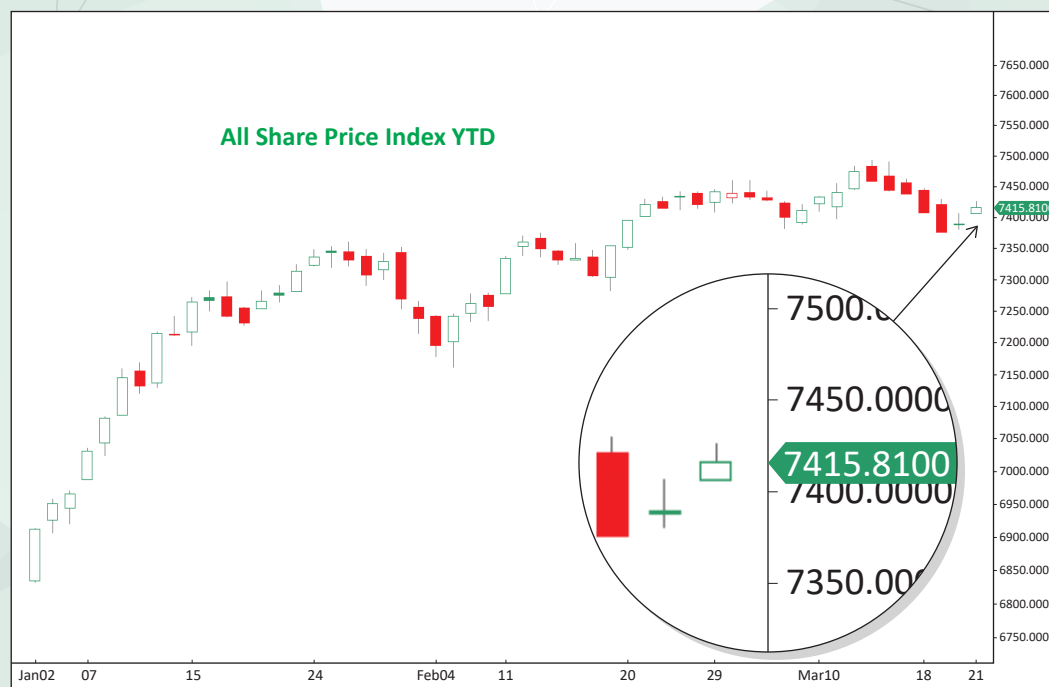
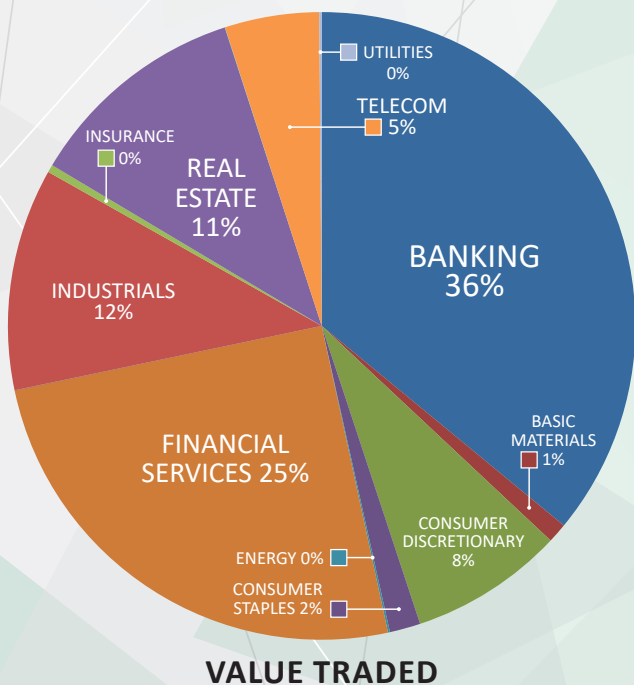
Stock	last Close	Change %	Volume	Value	Trades
MRC	90.5	-14.62%	125,333	11,949	47
SENERGY	33.9	-8.87%	574,424	19,007	56
GFC	74.3	-8.04%	53,591	3,841	14
KCEM	194	-7.62%	19,859,367	4,005,983	1,014
DALQAN	137	-7.43%	703,133	97,551	132

### Top Volume

Stock	Last	Change %	Volume	Value	Trades
KPROJ	132	5.60%	91,053,999	11,854,699	1,414
GFH	87.9	1.03%	51,835,023	4,507,460	1,380
KFH	807	-0.49%	29,471,691	23,799,954	3,063
KIB	169	-1.17%	20,942,723	3,549,156	631
ALTIJARIA	128	0.79%	19,887,285	2,560,704	649

### Top Value

Stock	Last	Change %	Volume	Value	Trades
KFH	807	-0.49%	29,471,691	23,799,954	3,063
NBK	971	0.41%	14,970,025	14,508,447	2,267
KPROJ	132	5.60%	91,053,999	11,854,699	1,414
MABANEE	850	-0.58%	7,731,842	6,489,614	1,339
ZAIN	501	-1.38%	11,243,565	5,643,071	2,158



### Market Summary:

- Premier and Main markets volume and value dropped by 25% 35%, and 36% 41%, respectively.
- The Premier index rebounds from a critical resistance level, while the Main index still fluctuates.
- Technically, the All Share index closed at 7415, with support levels at 7379, 7318, and 7286, while resistance at 7417. The Premier index closed at 8117, with support levels at 8116, 8083, and 8044, while resistance at 8151. The Main index closed at 6121, with support levels at 6112, 6083, and 6058, while resistance was at 6153.