

Market	M. Cap (KD ml)	Last Close	WTD %	MTD %	YTD %	Quantity Traded	Value Traded	No. of Trades	P/E	P/B	% of Total M. Cap
Premier Market	33,770	7,839.55	-3.7%	-2.9%	-1.3%	619,846,163	293,235,904	38,514	15.5	1.2	79.2%
Main Market	8,880	5,424.50	-1.4%	-2.2%	-2.6%	222,455,942	36,508,431	14,333	11.5	0.7	20.8%
All Share	42,649	7,045.83	-3.3%	-2.7%	-1.6%	842,302,105	329,744,335	52,847	12.6	0.8	100%

Sector	M. Cap (KD ml)	Last Close	WTD %	MTD %	YTD %	Quantity Traded	Value Traded	No. of Trades	P/E	P/B	% of Total M. Cap
Banking	26,306	1,759.64	-3.9%	-2.8%	-0.1%	300,283,937	196,230,711	19,404	22.2	1.2	61.68%
Basic Materials	471	833.50	-1.3%	-1.3%	-2.7%	1,442,683	915,256	457	7.7	1.3	1.10%
Consumer Discretionary	981	1,464.61	-0.5%	0.6%	3.0%	15,120,324	4,900,551	2,015	12.5	0.9	2.30%
Consumer Staples	142	464.83	-2.9%	-2.9%	-1.4%	4,396,035	1,667,574	268	NM	1.0	0.33%
Energy	210	1,004.46	-2.4%	-1.3%	-14.7%	1,483,942	80,138	169	10.9	0.6	0.49%
Financial Services	4,137	1,172.75	-4.1%	-5.1%	-5.2%	307,191,716	36,880,389	13,558	10.9	0.7	9.70%
Health Care	229	462.30	0.0%	0.5%	0.1%	0	0.000	0	13.4	2.5	0.54%
Industrials	3,385	963.41	-1.6%	-2.7%	-8.0%	44,932,505	31,564,288	6,203	12.8	0.8	7.94%
Insurance	672	1,628.57	0.6%	0.1%	4.8%	1,566,188	550,649	352	10.2	0.8	1.57%
Real Estate	2,354	1,095.67	-2.4%	-4.1%	-7.9%	106,790,512	25,118,085	4,851	13.3	0.5	5.52%
Technology	9	672.21	-0.6%	-0.8%	-8.5%	9,401	862	7	NM	0.8	0.02%
Telecommunications	3,558	1,159.94	-0.9%	-1.0%	-0.7%	55,949,798	31,273,022	5,240	14.0	2.0	8.34%
Utilities	197	471.05	-1.6%	-1.6%	-2.7%	3,135,064	562,809	323	13.6	1.7	0.46%

### Top Gainers

Stock	last Close	Change %	Volume	Value	Trades
SANAM	74	10.12%	103,827	7,222.191	17
ALKOUT	429	10.00%	1,000	429.000	1
MRC	66	10.00%	168	10,086.165	22
ARKAN	105	7.14%	20,126	1,946.683	7
MADAR	100	6.28%	3,268,881	326,356.813	16

### Top Losers

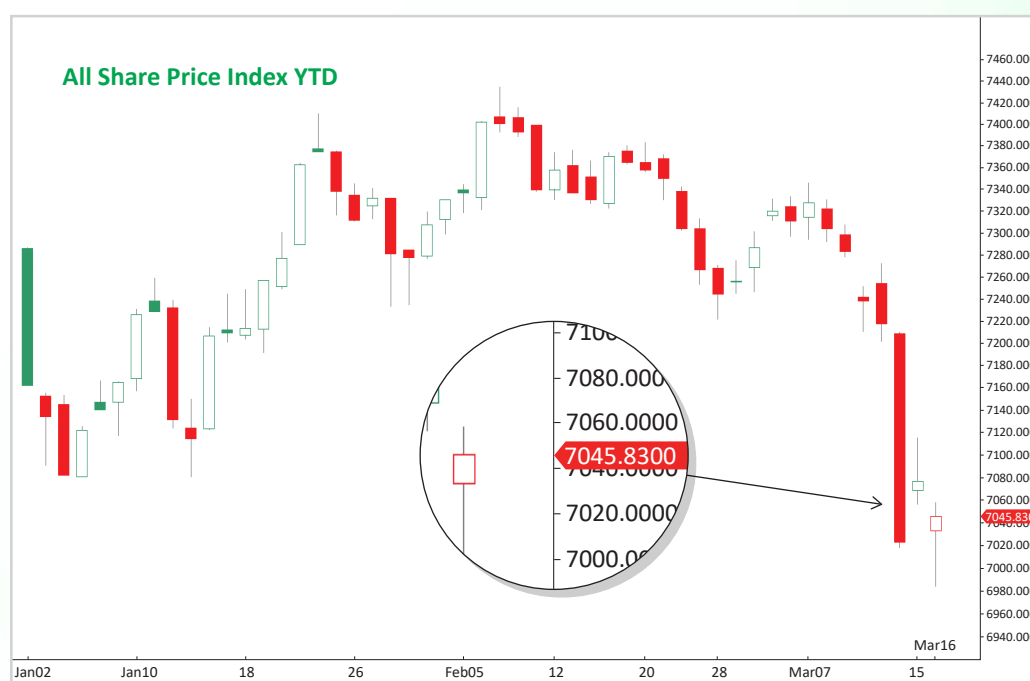
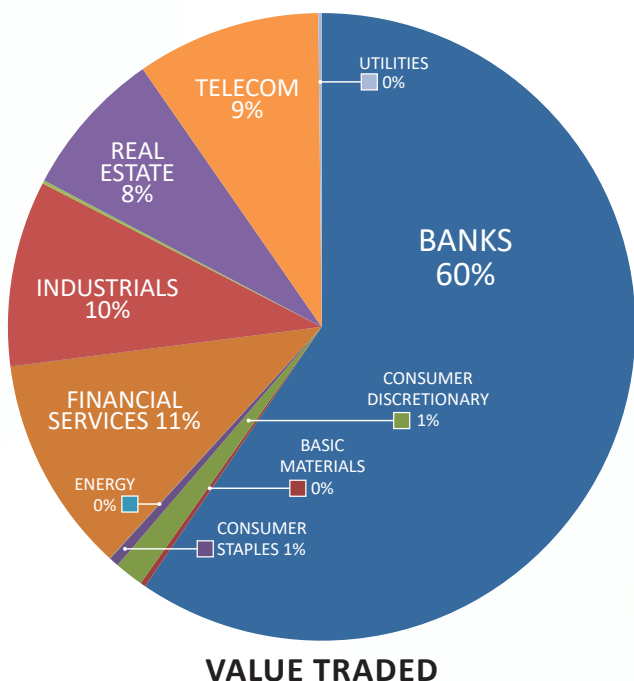
Stock	last Close	Change %	Volume	Value	Trades
BAYANINV	26.2	-36.25%	5,602,327	164,062	214
THURAYA	161	-17.44%	54	10	5
AGHC	325	-17.30%	3,817,925	1,374,953	316
INOVEST	63.5	-16.99%	1,763,578	115,942	188
ALMANAR	53	-13.40%	84,884	4,719	22

### Top Volume

Stock	Last	Change %	Volume	Value	Trades
KFH	825	-5.17%	149,295,233	125,439,694	8,972
AAYAN	127	-8.63%	64,811,984	8,351,712	1,110
GFH	71.9	-6.62%	53,949,543	3,933,757	1,902
KIB	185	-5.13%	43,321,162	8,163,784	1,252
ZAIN	543	-1.63%	42,139,975	22,696,221	3,507

### Top Value

Stock	Last	Change %	Volume	Value	Trades
KFH	825	-5.17%	149,295,233	125,439,694	8,972
NBK	1,066	-3.96%	30,445,278	32,821,735	3,152
ZAIN	543	-1.63%	42,139,975	22,696,221	3,507
BOUBYAN	696	-5.69%	22,356,606	15,748,533	2,754
HUMANSOFT	3,662	-1.74%	3,848,379	14,229,193	928



### Market Summary:

- Premier market volume and value rose 138% and 160%, while Main Market volume and value rose 16% and 56%, respectively. This significant increase is due to an increase in selling pressure.
- Premier and Main indexes both fell significantly due to American Banks' crises.
- Technically, the All Share index closed at 7045, with support levels at 7041, 7000, and 6981, while resistance at 7105. The Premier index closed at 7839, with support levels at 7828, 7784, and 7701, while resistance at 7926. The Main index closed at 5424, with support levels at 5393, 5339, and 5308, while resistance at 5424.